

## ARG44193 anti-MIS12 antibody

Package: 50 µg  
Store at: -20°C

### Summary

Product Description	Rabbit Polyclonal antibody recognizes MIS12
Tested Reactivity	Hu
Tested Application	FACS, ICC/IF, WB
Host	Rabbit
Clonality	Polyclonal
Isotype	IgG
Target Name	MIS12
Species	Human
Immunogen	Recombinant protein of Human MIS12
Conjugation	Un-conjugated
Alternate Names	MIS12; MIS12 Kinetochores Complex Component; KNTC2AP; MTW1; Protein MIS12 Homolog; MGC2488; HMIS12; MIS12, MIND Kinetochores Complex Component, Homolog (S. Pombe); MIS12, MIND Kinetochores Complex Component, Homolog (Yeast); MIS12, MIND Kinetochores Complex Component, Homolog; Homolog Of Yeast Mis12; 2510025F08Rik; MIS12 Homolog; HMis12

### Application Instructions

Application table	Application	Dilution
	FACS	1-3 µg/1x10 <sup>6</sup> cells
	ICC/IF	5 µg/ml
	WB	0.1-0.25 µg/ml
Application Note	* The dilutions indicate recommended starting dilutions and the optimal dilutions or concentrations should be determined by the scientist.	

### Properties

Form	Liquid
Purification	Affinity purification with immunogen.
Buffer	0.9% NaCl, 0.2% Na <sub>2</sub> HPO <sub>4</sub> , 0.05% Sodium azide and 5% BSA.
Preservative	0.05% Sodium azide
Stabilizer	5% BSA
Concentration	0.5 mg/ml
Storage instruction	For continuous use, store undiluted antibody at 2-8°C for up to a week. For long-term storage, aliquot and store at -20°C or below. Storage in frost free freezers is not recommended. Avoid repeated freeze/thaw cycles. Suggest spin the vial prior to opening. The antibody solution should be gently mixed

before use.

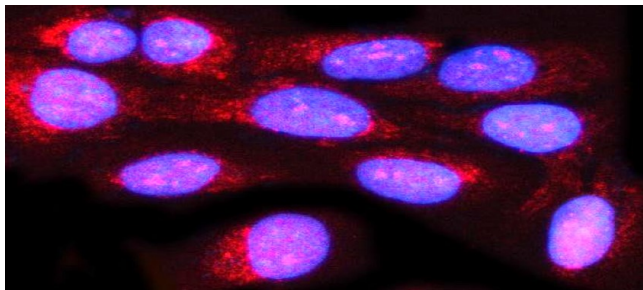
## Note

For laboratory research only, not for drug, diagnostic or other use.

## Bioinformation

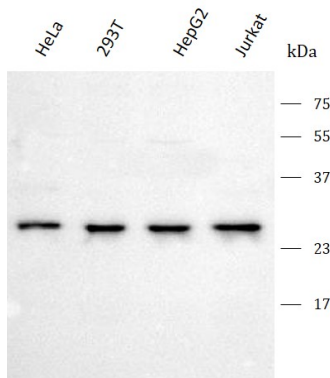
Gene Symbol	MIS12
Gene Full Name	Mis12 Kinetochore Complex Component
Background	Involved in attachment of mitotic spindle microtubules to kinetochore and kinetochore assembly. Located in kinetochore and nucleus. Part of MIS12/MIND type complex.
Function	Part of the MIS12 complex which is required for normal chromosome alignment and segregation and for kinetochore formation during mitosis.
Calculated Mw	24 kDa
Cellular Localization	Centromere, Chromosome, Kinetochore

## Images



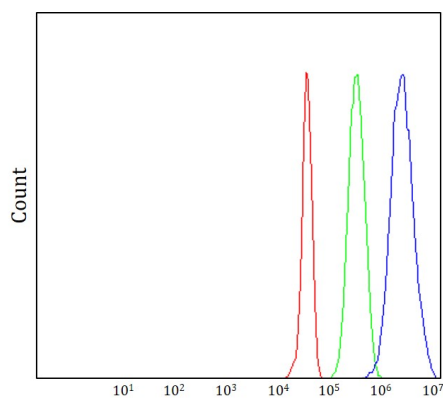
ARG44193 anti-MIS12 antibody ICC/IF image

Immunofluorescence: U2OS stained with ARG44193 anti-MIS12 antibody at 5 µg/mL dilution.



ARG44193 anti-MIS12 antibody WB image

Western blot: HeLa, 293T, HepG2 and Jurkat stained with ARG44193 anti-MIS12 antibody at 0.5 µg/mL dilution.



ARG44193 anti-MIS12 antibody FACS image

Flow Cytometry: JK stained with ARG44193 anti-MIS12 antibody at 1 µg/1x10<sup>6</sup> cells dilution.