

## ARG44197 anti-NAP1L1 antibody

Package: 50 µg  
Store at: -20°C

### Summary

Product Description	Rabbit Polyclonal antibody recognizes NAP1L1
Tested Reactivity	Hu, Ms, Rat
Tested Application	FACS, ICC/IF, WB
Host	Rabbit
Clonality	Polyclonal
Isotype	IgG
Target Name	NAP1L1
Species	Human
Immunogen	A synthetic peptide of Human NAP1L1.
Conjugation	Un-conjugated
Alternate Names	NAP1L1; Nucleosome Assembly Protein 1 Like 1; NRP; Nucleosome Assembly Protein 1-Like 1; NAP1L; NAP1; NAP-1-Related Protein; MGC23410; MGC8688; HSP22-Like Protein Interacting Protein; HNRP

### Application Instructions

Application table	Application	Dilution
	FACS	1-3 µg/1x10 <sup>6</sup> cells
	ICC/IF	5 µg/ml
	WB	0.25-0.5 µg/ml
Application Note	* The dilutions indicate recommended starting dilutions and the optimal dilutions or concentrations should be determined by the scientist.	

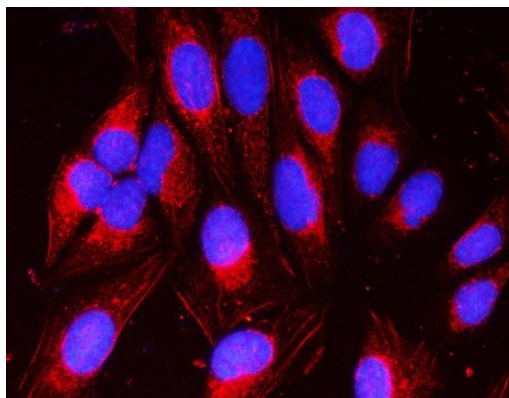
### Properties

Form	Liquid
Purification	Affinity purification with immunogen.
Buffer	0.9% NaCl, 0.2% Na <sub>2</sub> HPO <sub>4</sub> , 0.05% Sodium azide and 5% BSA.
Preservative	0.05% Sodium azide
Stabilizer	5% BSA
Concentration	0.5 mg/ml
Storage instruction	For continuous use, store undiluted antibody at 2-8°C for up to a week. For long-term storage, aliquot and store at -20°C or below. Storage in frost free freezers is not recommended. Avoid repeated freeze/thaw cycles. Suggest spin the vial prior to opening. The antibody solution should be gently mixed before use.

## Bioinformation

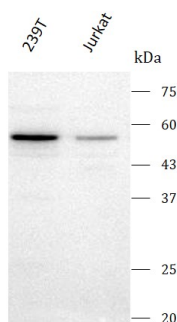
Gene Symbol	NAP1L1
Gene Full Name	Nucleosome Assembly Protein 1 Like 1
Background	This gene encodes a member of the nucleosome assembly protein (NAP) family. This protein participates in DNA replication and may play a role in modulating chromatin formation and contribute to the regulation of cell proliferation. Alternative splicing results in multiple transcript variants encoding different isoforms; however, not all have been fully described.
Function	Histone chaperone that plays a role in the nuclear import of H2A-H2B and nucleosome assembly.
Calculated Mw	45 kDa
PTM	Acetylation, Lipoprotein, Methylation, Phosphoprotein, Prenylation
Cellular Localization	Cytoplasm, Nucleus

## Images



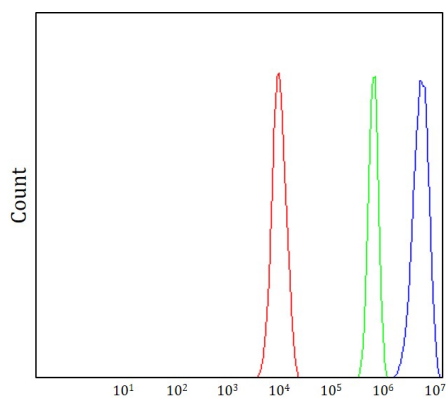
ARG44197 anti-NAP1L1 antibody ICC/IF image

Immunofluorescence: U2OS stained with ARG44197 anti-NAP1L1 antibody at 5 µg/mL dilution.



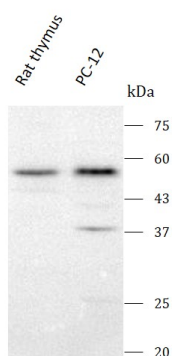
ARG44197 anti-NAP1L1 antibody WB image

Western blot: 293T and Jurkat stained with ARG44197 anti-NAP1L1 antibody at 0.5 µg/mL dilution.



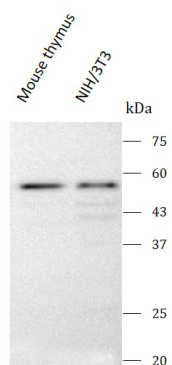
ARG44197 anti-NAP1L1 antibody FACS image

Flow Cytometry: PC-3 stained with ARG44197 anti-NAP1L1 antibody at  $1\text{ }\mu\text{g}/1\times 10^6$  cells dilution.



ARG44197 anti-NAP1L1 antibody WB image

Western blot: Rat thymus and PC-12 stained with ARG44197 anti-NAP1L1 antibody at  $0.5\text{ }\mu\text{g}/\text{mL}$  dilution.



ARG44197 anti-NAP1L1 antibody WB image

Western blot: Mouse thymus and NIH/3T3 stained with ARG44197 anti-NAP1L1 antibody at  $0.5\text{ }\mu\text{g}/\text{mL}$  dilution.