

ARG44198 anti-NAP1L5 antibody

Package: 50 µg
Store at: -20°C

Summary

Product Description	Rabbit Polyclonal antibody recognizes NAP1L5
Tested Reactivity	Hu, Ms, Rat
Tested Application	FACS, ICC/IF, WB
Host	Rabbit
Clonality	Polyclonal
Isotype	IgG
Target Name	NAP1L5
Species	Human
Immunogen	A synthetic peptide of Human NAP1L5.
Conjugation	Un-conjugated
Alternate Names	NAP1L5; Nucleosome Assembly Protein 1 Like 5; DRLM; Nucleosome Assembly Protein 1-Like 5; Down-Regulated In Liver Malignancy

Application Instructions

Application table	Application	Dilution
	FACS	1-3 µg/1x10 ⁶ cells
	ICC/IF	5 µg/ml
	WB	0.25-0.5 µg/ml
Application Note	* The dilutions indicate recommended starting dilutions and the optimal dilutions or concentrations should be determined by the scientist.	

Properties

Form	Liquid
Purification	Affinity purification with immunogen.
Buffer	0.9% NaCl, 0.2% Na ₂ HPO ₄ , 0.05% Sodium azide and 5% BSA.
Preservative	0.05% Sodium azide
Stabilizer	5% BSA
Concentration	0.5 mg/ml
Storage instruction	For continuous use, store undiluted antibody at 2-8°C for up to a week. For long-term storage, aliquot and store at -20°C or below. Storage in frost free freezers is not recommended. Avoid repeated freeze/thaw cycles. Suggest spin the vial prior to opening. The antibody solution should be gently mixed before use.

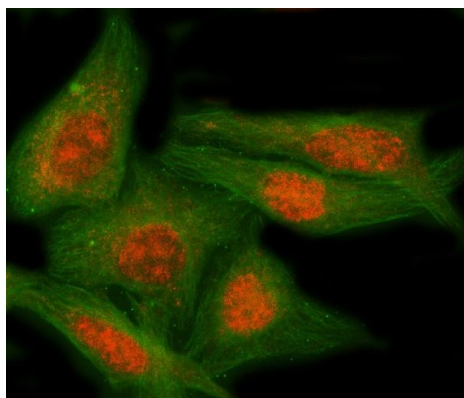
Note

For laboratory research only, not for drug, diagnostic or other use.

Bioinformation

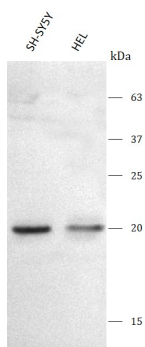
Gene Symbol	NAP1L5
Gene Full Name	Nucleosome Assembly Protein 1 Like 5
Background	This gene encodes a protein that shares sequence similarity to nucleosome assembly factors, but may be localized to the cytoplasm rather than the nucleus. Expression of this gene is downregulated in hepatocellular carcinomas. This gene is located within a differentially methylated region (DMR) and is imprinted and paternally expressed. There is a related pseudogene on chromosome 4.
Calculated Mw	20 kDa
Cellular Localization	Nucleus

Images



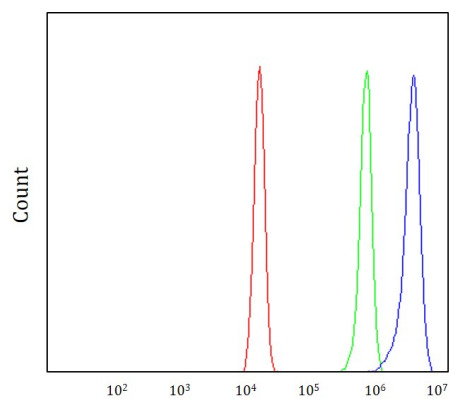
ARG44198 anti-NAP1L5 antibody ICC/IF image

Immunofluorescence: HeLa stained with ARG44198 anti-NAP1L5 antibody at 5 µg/mL dilution.



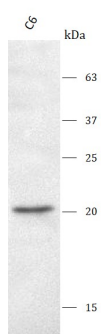
ARG44198 anti-NAP1L5 antibody WB image

Western blot: SH-SY5Y and HEL stained with ARG44198 anti-NAP1L5 antibody at 0.5 µg/mL dilution.



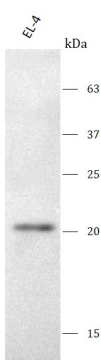
ARG44198 anti-NAP1L5 antibody FACS image

Flow Cytometry: HeLa stained with ARG44198 anti-NAP1L5 antibody at 1 $\mu\text{g}/1 \times 10^6$ cells dilution.



ARG44198 anti-NAP1L5 antibody WB image

Western blot: C6 stained with ARG44198 anti-NAP1L5 antibody at 0.5 $\mu\text{g}/\text{mL}$ dilution.



ARG44198 anti-NAP1L5 antibody WB image

Western blot: EL-4 stained with ARG44198 anti-NAP1L5 antibody at 0.5 $\mu\text{g}/\text{mL}$ dilution.