

ARG44210 anti-MYL5 antibody

Package: 50 µg
Store at: -20°C

Summary

Product Description	Rabbit Polyclonal antibody recognizes MYL5
Tested Reactivity	Hu, Ms, Rat
Tested Application	FACS, ICC/IF, IHC-P, WB
Host	Rabbit
Clonality	Polyclonal
Isotype	IgG
Target Name	MYL5
Species	Human
Immunogen	Recombinant protein of Human MYL5
Conjugation	Un-conjugated
Alternate Names	MYL5; Myosin Light Chain 5; Superfast Myosin Regulatory Light Chain 2; Myosin, Light Polypeptide 5, Regulatory; Myosin, Light Chain 5, Regulatory; Myosin Regulatory Light Chain 5; MYLC2; MyLC-2

Application Instructions

Application table	Application	Dilution
	FACS	1-3 µg/1x10 ⁶ cells
	ICC/IF	5 µg/ml
	IHC-P	2-5 µg/ml
	WB	0.25-0.5 µg/ml
Application Note	* The dilutions indicate recommended starting dilutions and the optimal dilutions or concentrations should be determined by the scientist.	

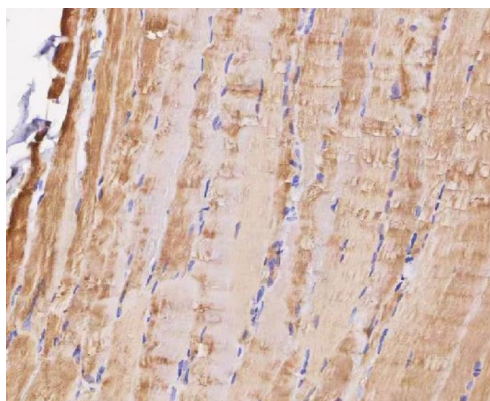
Properties

Form	Liquid
Purification	Affinity purification with immunogen.
Buffer	0.9% NaCl, 0.2% Na ₂ HPO ₄ , 0.05% Sodium azide and 5% BSA.
Preservative	0.05% Sodium azide
Stabilizer	5% BSA
Concentration	0.5 mg/ml
Storage instruction	For continuous use, store undiluted antibody at 2-8°C for up to a week. For long-term storage, aliquot and store at -20°C or below. Storage in frost free freezers is not recommended. Avoid repeated freeze/thaw cycles. Suggest spin the vial prior to opening. The antibody solution should be gently mixed before use.

Bioinformation

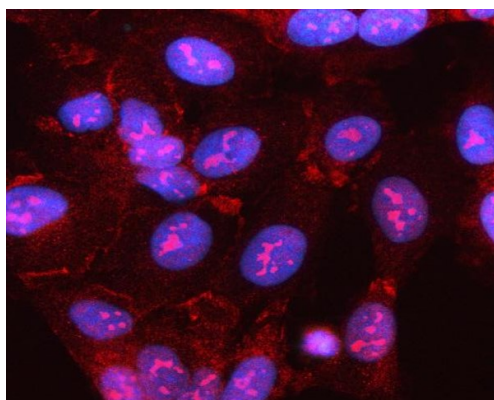
Gene Symbol	MYL5
Gene Full Name	Myosin Light Chain 5
Background	This gene encodes one of the myosin light chains, a component of the hexameric ATPase cellular motor protein myosin. Myosin is composed of two heavy chains, two nonphosphorylatable alkali light chains, and two phosphorylatable regulatory light chains. This gene product, one of the regulatory light chains, is expressed in fetal muscle and in adult retina, cerebellum, and basal ganglia.
Function	This chain binds calcium.
Calculated Mw	20 kDa
Cellular Localization	Cytoplasm, Cytosol

Images



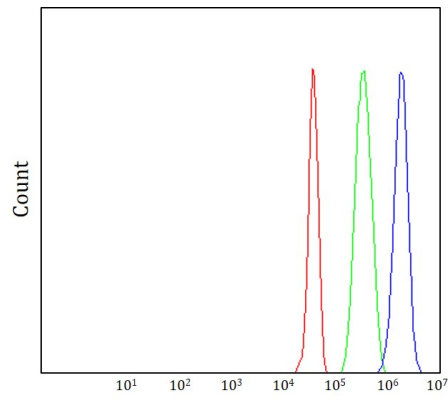
ARG44210 anti-MYL5 antibody IHC-P image

Immunohistochemistry: Human skeletal muscle stained with ARG44210 anti-MYL5 antibody at 2 µg/mL dilution.



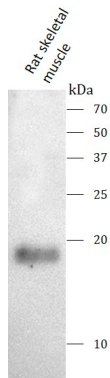
ARG44210 anti-MYL5 antibody ICC/IF image

Immunofluorescence: U2OS stained with ARG44210 anti-MYL5 antibody at 5 µg/mL dilution.



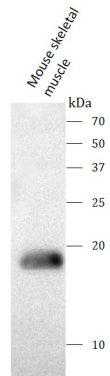
ARG44210 anti-MYL5 antibody FACS image

Flow Cytometry: JK stained with ARG44210 anti-MYL5 antibody at 1 $\mu\text{g}/1 \times 10^6$ cells dilution.



ARG44210 anti-MYL5 antibody WB image

Western blot: Rat skeletal muscle stained with ARG44210 anti-MYL5 antibody at 0.5 $\mu\text{g}/\text{mL}$ dilution.



ARG44210 anti-MYL5 antibody WB image

Western blot: Mouse skeletal muscle stained with ARG44210 anti-MYL5 antibody at 0.5 $\mu\text{g}/\text{mL}$ dilution.