

## ARG44222 anti-MTCL1 antibody

Package: 50 µg  
Store at: -20°C

### Summary

Product Description	Rabbit Polyclonal antibody recognizes MTCL1
Tested Reactivity	Hu, Ms, Rat
Tested Application	FACS, IHC-P, WB
Host	Rabbit
Clonality	Polyclonal
Isotype	IgG
Target Name	MTCL1
Species	Human
Immunogen	Recombinant protein of Human MTCL1
Conjugation	Un-conjugated
Alternate Names	MTCL1; Microtubule Crosslinking Factor 1; KIAA0802; SOGA Family Member 2; CCDC165; SOGA2; Coiled-Coil Domain-Containing Protein 165; Microtubule Cross-Linking Factor 1; Coiled-Coil Domain Containing 165; PAR-1-Interacting Protein

### Application Instructions

Application table	Application	Dilution
	FACS	1-3 µg/1x10 <sup>6</sup> cells
	IHC-P	2-5 µg/ml
	WB	0.25-0.5 µg/ml
Application Note	* The dilutions indicate recommended starting dilutions and the optimal dilutions or concentrations should be determined by the scientist.	

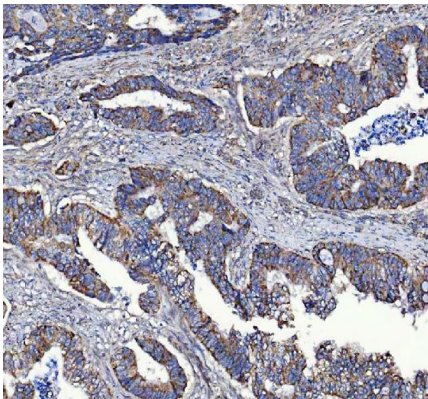
### Properties

Form	Liquid
Purification	Affinity purification with immunogen.
Buffer	0.9% NaCl, 0.2% Na <sub>2</sub> HPO <sub>4</sub> , 0.05% Sodium azide and 5% BSA.
Preservative	0.05% Sodium azide
Stabilizer	5% BSA
Concentration	0.5 mg/ml
Storage instruction	For continuous use, store undiluted antibody at 2-8°C for up to a week. For long-term storage, aliquot and store at -20°C or below. Storage in frost free freezers is not recommended. Avoid repeated freeze/thaw cycles. Suggest spin the vial prior to opening. The antibody solution should be gently mixed before use.

Bioinformation

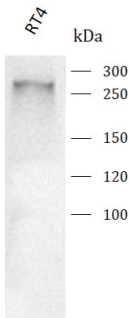
Gene Symbol	MTCL1
Gene Full Name	Microtubule Crosslinking Factor 1
Background	Enables microtubule binding activity. Predicted to be involved in establishment or maintenance of epithelial cell apical/basal polarity; microtubule bundle formation; and positive regulation of protein targeting to membrane. Located in midbody and spindle pole.
Function	Microtubule-associated factor involved in the late phase of epithelial polarization and microtubule dynamics regulation. Plays a role in the development and maintenance of non-centrosomal microtubule bundles at the lateral membrane in polarized epithelial cells.
Calculated Mw	21 kDa
PTM	Phosphoprotein
Cellular Localization	Cell membrane, Cytoplasm, Cytoskeleton, Membrane

Images



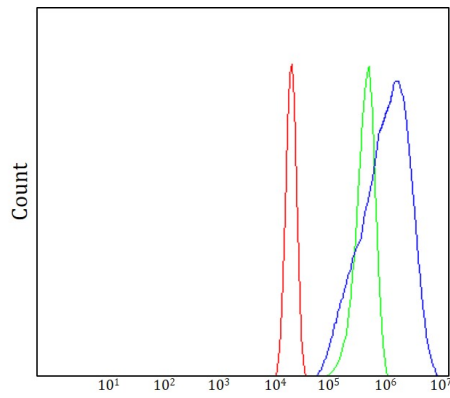
ARG44222 anti-MTCL1 antibody IHC-P image

Immunohistochemistry: Human colorectal adenocarcinoma stained with ARG44222 anti-MTCL1 antibody at 2 µg/mL dilution.



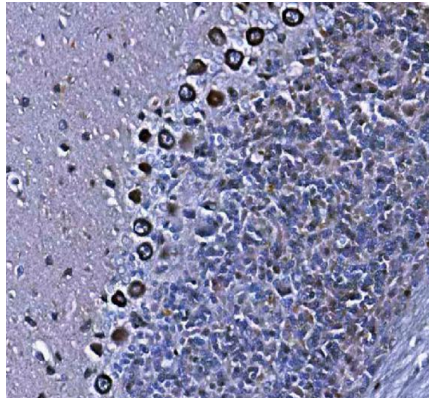
ARG44222 anti-MTCL1 antibody WB image

Western blot: RT4 stained with ARG44222 anti-MTCL1 antibody at 0.5 µg/mL dilution.



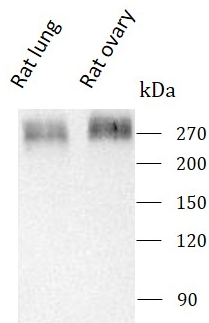
ARG44222 anti-MTCL1 antibody FACS image

Flow Cytometry: U2OS stained with ARG44222 anti-MTCL1 antibody at 1  $\mu\text{g}/1 \times 10^6$  cells dilution.



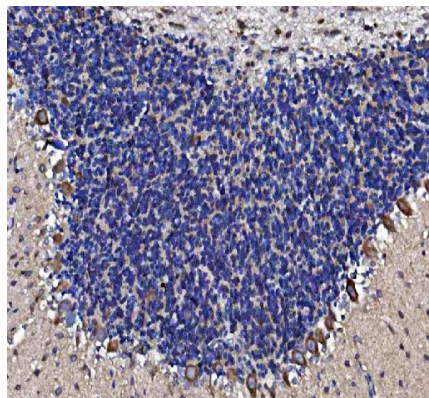
ARG44222 anti-MTCL1 antibody IHC-P image

Immunohistochemistry: Rat cerebellum stained with ARG44222 anti-MTCL1 antibody at 2  $\mu\text{g}/\text{mL}$  dilution.



ARG44222 anti-MTCL1 antibody WB image

Western blot: Rat lung and Rat ovary stained with ARG44222 anti-MTCL1 antibody at 0.5  $\mu\text{g}/\text{mL}$  dilution.



ARG44222 anti-MTCL1 antibody IHC-P image

Immunohistochemistry: Mouse cerebellum stained with ARG44222 anti-MTCL1 antibody at 2  $\mu\text{g}/\text{mL}$  dilution.

#### ARG44222 anti-MTCL1 antibody WB image

Western blot: Mouse lung and Mouse ovary stained with ARG44222 anti-MTCL1 antibody at 0.5 µg/mL dilution.

