

ARG44236 anti-MOSPD2 antibody

Package: 50 µg
Store at: -20°C

Summary

Product Description	Rabbit Polyclonal antibody recognizes MOSPD2
Tested Reactivity	Hu, Ms, Rat
Tested Application	FACS, IHC-P, WB
Host	Rabbit
Clonality	Polyclonal
Isotype	IgG
Target Name	MOSPD2
Species	Human
Immunogen	Recombinant protein of Human MOSPD2
Conjugation	Un-conjugated
Alternate Names	MOSPD2; Motile Sperm Domain Containing 2; Motile Sperm Domain-Containing Protein 2; MGC26706

Application Instructions

Application table	Application	Dilution
	FACS	1-3 µg/1x10 ⁶ cells
	IHC-P	2-5 µg/ml
	WB	0.25-0.5 µg/ml
Application Note	* The dilutions indicate recommended starting dilutions and the optimal dilutions or concentrations should be determined by the scientist.	

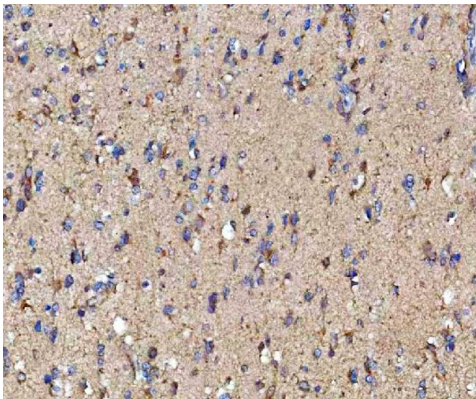
Properties

Form	Liquid
Purification	Affinity purification with immunogen.
Buffer	0.9% NaCl, 0.2% Na ₂ HPO ₄ , 0.05% Sodium azide and 5% BSA.
Preservative	0.05% Sodium azide
Stabilizer	5% BSA
Concentration	0.5 mg/ml
Storage instruction	For continuous use, store undiluted antibody at 2-8°C for up to a week. For long-term storage, aliquot and store at -20°C or below. Storage in frost free freezers is not recommended. Avoid repeated freeze/thaw cycles. Suggest spin the vial prior to opening. The antibody solution should be gently mixed before use.
Note	For laboratory research only, not for drug, diagnostic or other use.

Bioinformation

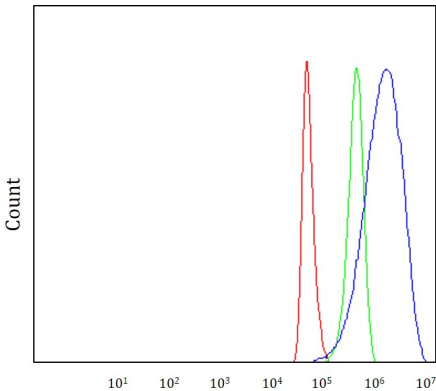
Gene Symbol	MOSPD2
Gene Full Name	Motile Sperm Domain Containing 2
Background	Involved in positive regulation of monocyte chemotaxis and positive regulation of neutrophil chemotaxis. Located in endoplasmic reticulum and endoplasmic reticulum-endosome membrane contact site. Is integral component of plasma membrane.
Function	Endoplasmic reticulum-anchored protein that mediates the formation of contact sites between the endoplasmic (ER) and endosomes, mitochondria or Golgi through interaction with conventionnal- and phosphorylated-FFAT-containing organelle-bound proteins.
Calculated Mw	60 kDa
Cellular Localization	Endoplasmic reticulum, Membrane

Images



ARG44236 anti-MOSPD2 antibody IHC-P image

Immunohistochemistry: Human brain stained with ARG44236 anti-MOSPD2 antibody at 2 µg/ml dilution.



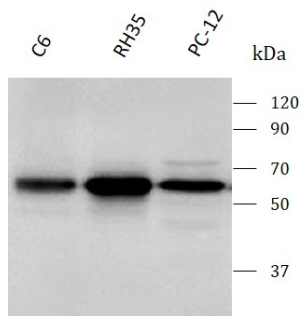
ARG44236 anti-MOSPD2 antibody FACS image

Flow Cytometry: HeLa stained with ARG44236 anti-MOSPD2 antibody at 1 µg/1x10⁶ cells dilution.



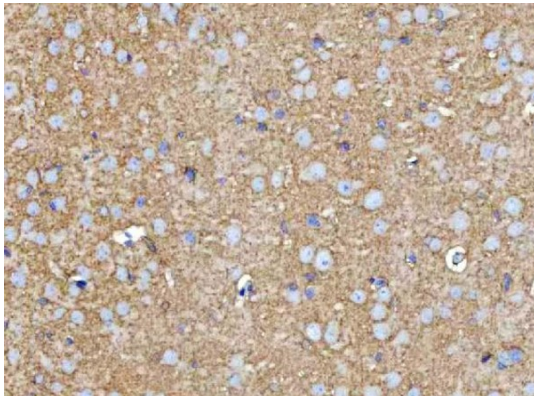
ARG44236 anti-MOSPD2 antibody IHC-P image

Immunohistochemistry: Rat brain stained with ARG44236 anti-MOSPD2 antibody at 2 $\mu\text{g/ml}$ dilution.



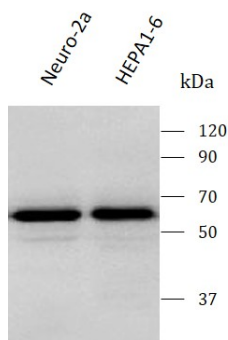
ARG44236 anti-MOSPD2 antibody WB image

Western blot: C6, RH35 and PC-12 stained with ARG44236 anti-MOSPD2 antibody at 0.5 $\mu\text{g/mL}$ dilution.



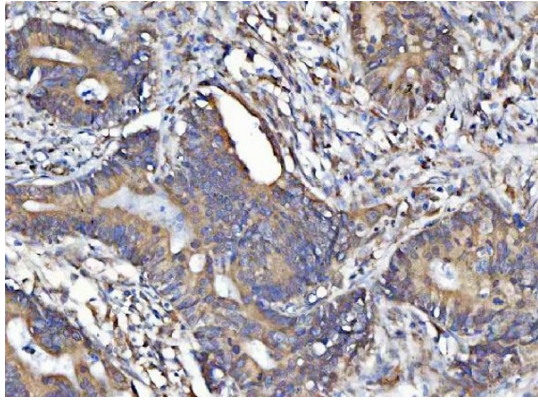
ARG44236 anti-MOSPD2 antibody IHC-P image

Immunohistochemistry: Mouse brain stained with ARG44236 anti-MOSPD2 antibody at 2 $\mu\text{g/ml}$ dilution.



ARG44236 anti-MOSPD2 antibody WB image

Western blot: Neuro-2a and HEPA1-6 stained with ARG44236 anti-MOSPD2 antibody at 0.5 $\mu\text{g/mL}$ dilution.



ARG44236 anti-MOSPD2 antibody IHC-P image

Immunohistochemistry: Human colorectal adenocarcinoma stained with ARG44236 anti-MOSPD2 antibody at 2 µg/ml dilution.