

ARG44259 anti-Cathepsin B antibody

Package: 50 µg
Store at: -20°C

Summary

Product Description	Goat Polyclonal antibody recognizes Cathepsin B
Tested Reactivity	Hu
Predict Reactivity	Ms, Rat, Dog
Tested Application	FACS, ICC/IF, IHC-P
Host	Goat
Clonality	Polyclonal
Isotype	IgG
Target Name	Cathepsin B
Species	Human
Immunogen	Synthetic peptide around the internal region of Human Cathepsin B (DELVNYVVKRNT)
Conjugation	Un-conjugated
Alternate Names	EC 3.4.22.1; Cathepsin B; APPS; CPSB; APP secretase; Cathepsin B1

Application Instructions

Application table	Application	Dilution
	FACS	10 µg/µl
	ICC/IF	10 µg/µl
	IHC-P	5 µg/µl
Application Note	* The dilutions indicate recommended starting dilutions and the optimal dilutions or concentrations should be determined by the scientist.	

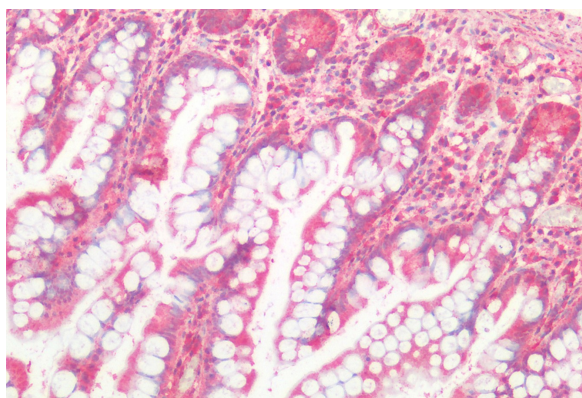
Properties

Form	Liquid
Purification	Affinity purified
Buffer	Tris saline (pH 7.3), 0.02% Sodium azide and 0.5% BSA.
Preservative	0.02% Sodium azide
Stabilizer	0.5% BSA
Concentration	0.5 mg/ml
Storage instruction	For continuous use, store undiluted antibody at 2-8°C for up to a week. For long-term storage, aliquot and store at -20°C or below. Storage in frost free freezers is not recommended. Avoid repeated freeze/thaw cycles. Suggest spin the vial prior to opening. The antibody solution should be gently mixed before use.

Bioinformation

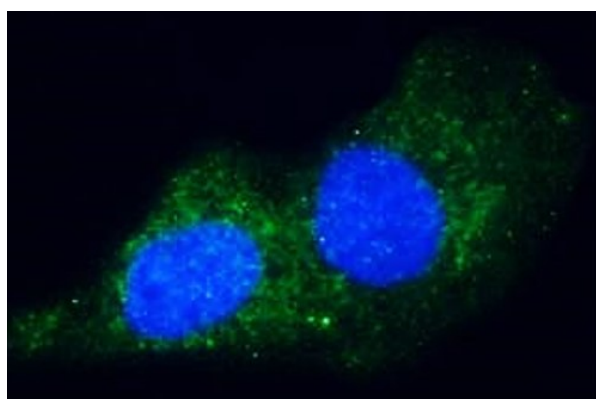
Gene Symbol	CTSB
Gene Full Name	cathepsin B
Background	The protein encoded by this gene is a lysosomal cysteine proteinase composed of a dimer of disulfide-linked heavy and light chains, both produced from a single protein precursor. It is also known as amyloid precursor protein secretase and is involved in the proteolytic processing of amyloid precursor protein (APP). Incomplete proteolytic processing of APP has been suggested to be a causative factor in Alzheimer disease, the most common cause of dementia. Overexpression of the encoded protein, which is a member of the peptidase C1 family, has been associated with esophageal adenocarcinoma and other tumors. At least five transcript variants encoding the same protein have been found for this gene. [provided by RefSeq, Jul 2008]
Function	Thiol protease which is believed to participate in intracellular degradation and turnover of proteins. Has also been implicated in tumor invasion and metastasis. [UniProt]
Cellular Localization	Lysosome. Melanosome. Secreted, extracellular space. Note=Identified by mass spectrometry in melanosome fractions from stage I to stage IV. [UniProt]

Images



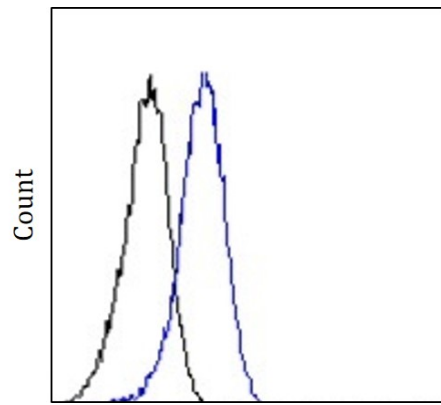
ARG44259 anti-Cathepsin B antibody IHC-P image

Immunohistochemistry: Human Small Intestine stained with ARG44259 anti-Cathepsin B antibody at 5 µg/ml dilution.



ARG44259 anti-Cathepsin B antibody ICC/IF image

Immunofluorescence: U2OS stained with ARG44259 anti-Cathepsin B antibody at 10 µg/m dilution.



ARG44259 anti-Cathepsin B antibody FACS image

Flow Cytometry: HepG2 stained with ARG44259 anti-Cathepsin B antibody at 10 μ g/ml dilution.