

ARG44283 anti-Gephyrin antibody

Package: 50 µl
Store at: -20°C

Summary

Product Description	Rabbit Polyclonal antibody recognizes Gephyrin
Tested Reactivity	Hu, Rat
Tested Application	WB
Host	Rabbit
Clonality	Polyclonal
Isotype	IgG
Target Name	Gephyrin
Species	Rat
Immunogen	Synthetic peptide
Conjugation	Un-conjugated
Alternate Names	GPHN; Gephyrin; KIAA1385; GPH; GEPH; GPHRYN; MOCODC; HKPX1

Application Instructions

Application table	Application	Dilution
	WB	1:1000
Application Note	* The dilutions indicate recommended starting dilutions and the optimal dilutions or concentrations should be determined by the scientist.	

Properties

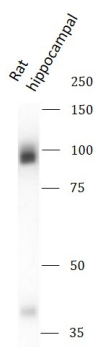
Form	Liquid
Purification	Antigen Affinity Purified
Buffer	10 mM HEPES (pH 7.5), 150 mM NaCl, 50% Glycerol and 100 µg/ml BSA.
Stabilizer	50% Glycerol and 100 µg/ml BSA
Storage instruction	For continuous use, store undiluted antibody at 2-8°C for up to a week. For long-term storage, aliquot and store at -20°C. Storage in frost free freezers is not recommended. Avoid repeated freeze/thaw cycles. Suggest spin the vial prior to opening. The antibody solution should be gently mixed before use.
Note	For laboratory research only, not for drug, diagnostic or other use.

Bioinformation

Gene Symbol	GPHN
Gene Full Name	Gephyrin

Background	This gene encodes a neuronal assembly protein that anchors inhibitory neurotransmitter receptors to the postsynaptic cytoskeleton via high affinity binding to a receptor subunit domain and tubulin dimers. In nonneuronal tissues, the encoded protein is also required for molybdenum cofactor biosynthesis. Mutations in this gene may be associated with the neurological condition hyperplexia and also lead to molybdenum cofactor deficiency. Numerous alternatively spliced transcript variants encoding different isoforms have been described; however, the full-length nature of all transcript variants is not currently known.
Function	Microtubule-associated protein involved in membrane protein-cytoskeleton interactions. It is thought to anchor the inhibitory glycine receptor (GLYR) to subsynaptic microtubules.
Calculated Mw	83 kDa
PTM	Lipoprotein, Palmitate, Phosphoprotein
Cellular Localization	Cell membrane, Cell projection, Cytoplasm, Cytoskeleton, Membrane, Postsynaptic cell membrane, Synapse

Images



ARG44283 anti-Gephyrin antibody WB image

Western blot: Rat hippocampal stained with ARG44283 anti-Gephyrin antibody.