

## ARG44334 anti-NGEF Antibody

Package: 100 µl  
Store at: -20°C

### Summary

|                     |  |
|---------------------|--|
| Product Description | Rabbit polyclonal recognizes NGEF  |
| Tested Reactivity   | Hu, Ms, Rat  |
| Tested Application  | IHC-P, WB  |
| Host                | Rabbit   |
| Clonality           | Polyclonal   |
| Isotype             | IgG  |
| Target Name         | NGEF   |
| Species             | Human  |
| Immunogen           | Fusion protein of human NGEF   |
| Conjugation         | Un-conjugated  |
| Alternate Names     | NGEF; Neuronal Guanine Nucleotide Exchange Factor; ARHGEF27; Eph-Interacting Exchange Protein; Ephexin-1; Ephexin1; Ephexin; EPHEXIN |

### Application Instructions

| Application table | Application  | Dilution           |
|-------------------|--|--------------------|
|                   | IHC-P  | 1 : 50 - 1 : 100   |
|                   | WB   | 1 : 500 - 1 : 1000 |
| Application Note  | * The dilutions indicate recommended starting dilutions and the optimal dilutions or concentrations should be determined by the scientist. |                    |

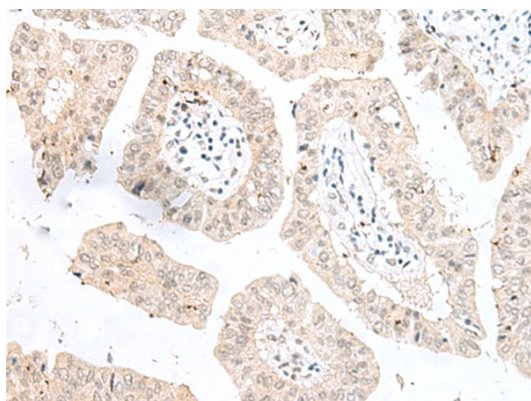
### Properties

|                     |   |
|---------------------|---|
| Form                | Liquid  |
| Purification        | Affinity purified.  |
| Buffer              | PBS (pH 7.4), 0.05% Sodium azide and 40% Glycerol.  |
| Preservative        | 0.05% Sodium azide  |
| Stabilizer          | 40% Glycerol  |
| Storage instruction | For continuous use, store undiluted antibody at 2-8°C for up to a week. For long-term storage, aliquot and store at -20°C. Storage in frost free freezers is not recommended. Avoid repeated freeze/thaw cycles. Suggest spin the vial prior to opening. The antibody solution should be gently mixed before use. |
| Note                | For laboratory research only, not for drug, diagnostic or other use.  |

### Bioinformation

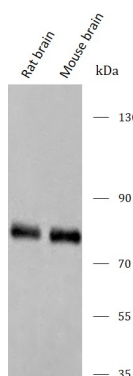
|                       |   |
|-----------------------|---|
| Gene Symbol           | NGEF  |
| Gene Full Name        | Neuronal Guanine Nucleotide Exchange Factor   |
| Background            | Enables guanyl-nucleotide exchange factor activity. Predicted to be involved in several processes, including activation of GTPase activity; ephrin receptor signaling pathway; and negative regulation of dendritic spine morphogenesis. Predicted to be located in cytosol. Predicted to be active in glutamatergic synapse.   |
| Function              | Acts as a guanine nucleotide exchange factor (GEF) which differentially activates the GTPases RHOA, RAC1 and CDC42. Plays a role in axon guidance regulating ephrin-induced growth cone collapse and dendritic spine morphogenesis. Upon activation by ephrin through EPHA4, the GEF activity switches toward RHOA resulting in its activation. Activated RHOA promotes cone retraction at the expense of RAC1- and CDC42-stimulated growth cone extension. |
| Calculated Mw         | 82 kDa  |
| PTM                   | Phosphoprotein  |
| Cellular Localization | Cell projection, Cytoplasm, Membrane  |

## Images



ARG44334 anti-NGEF Antibody IHC-P image

Immunohistochemistry: Human liver cancer stained with ARG44334 anti-NGEF Antibody.



ARG44334 anti-NGEF Antibody WB image

Western blot: Rat brain and Mouse brain stained with ARG44334 anti-NGEF Antibody.