

ARG44353 anti-MKL2 antibody

Package: 100 µl
Store at: -20°C

Summary

Product Description	Rabbit Polyclonal antibody recognizes MKL2
Tested Reactivity	Hu, Ms
Tested Application	WB
Host	Rabbit
Clonality	Polyclonal
Isotype	IgG
Target Name	MKL2
Species	Human
Immunogen	Human MKL2 recombinant fusion protein (a.a. sequence: 170-300).
Conjugation	Un-conjugated
Alternate Names	MRTFB; Myocardin Related Transcription Factor B; MRTF-B ; MKL2; Myocardin-Related Transcription Factor B; MKL And Myocardin Family Member 2; MKL/Myocardin-Like Protein 2; Megakaryoblastic Leukemia 2; MKL1/Myocardin Like 2; MKL/Myocardin Like 2; FLJ31823; CTA-276F8.1; KIAA1243; NPD001

Application Instructions

Application table	Application	Dilution
	WB	1:500 - 1:2000
Application Note	* The dilutions indicate recommended starting dilutions and the optimal dilutions or concentrations should be determined by the scientist.	

Properties

Form	Liquid
Purification	Affinity purified.
Buffer	PBS, 0.01% Thimerosal and 50% Glycerol.
Preservative	0.01% Thimerosal
Stabilizer	50% Glycerol
Storage instruction	For continuous use, store undiluted antibody at 2-8°C for up to a week. For long-term storage, aliquot and store at -20°C. Storage in frost free freezers is not recommended. Avoid repeated freeze/thaw cycles. Suggest spin the vial prior to opening. The antibody solution should be gently mixed before use.
Note	For laboratory research only, not for drug, diagnostic or other use.

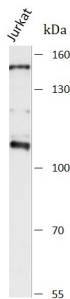
Bioinformation

Gene Symbol	MRTFB
Gene Full Name	Myocardin Related Transcription Factor B
Background	Enables transcription coactivator activity. Involved in positive regulation of pri-miRNA transcription by RNA polymerase II and positive regulation of striated muscle tissue development. Predicted to be located in cytoplasm. Predicted to be active in nucleus.
Function	Acts as a transcriptional coactivator of serum response factor (SRF). Required for skeletal myogenic differentiation.
Calculated Mw	118 kDa
PTM	Glycoprotein, Isopeptide bond, Phosphoprotein, Ubl conjugation
Cellular Localization	Nucleus

Images

ARG44353 anti-MKL2 antibody WB image

Western blot: Jurkat stained with ARG44353 anti-MKL2 antibody at 1:3000 dilution.



ARG44353 anti-MKL2 antibody WB image

Western blot: Mouse pancreas stained with ARG44353 anti-MKL2 antibody at 1:3000 dilution.

