

ARG44383 anti-PI4 kinase beta / PI4KB antibody

Package: 100 µl
Store at: -20°C

Summary

Product Description	Rabbit Polyclonal antibody recognizes PI4 kinase beta / PI4KB
Tested Reactivity	Hu, Ms
Tested Application	ICC/IF, WB
Host	Rabbit
Clonality	Polyclonal
Isotype	IgG
Target Name	PI4 kinase beta / PI4KB
Species	Human
Immunogen	Recombinant fusion protein containing a sequence corresponding to amino acids 560-801 of human PI4KB
Conjugation	Un-conjugated
Alternate Names	PI4KB; Phosphatidylinositol 4-Kinase Beta; PI4K-BETA; Pi4K92; PIK4CB; Phosphatidylinositol 4-Kinase, Catalytic, Beta; PtdIns 4-Kinase Beta; EC 2.7.1.67; PI4KIII; NPIK; Phosphatidylinositol 4-Kinase, Wortmannin-Sensitive; Type III Phosphatidylinositol 4-Kinase Beta; PI4KIIIBETA; PI4K-Beta

Application Instructions

Application table	Application	Dilution
	ICC/IF	1:50 - 1:200
	WB	1:1000 - 1:5000
Application Note	* The dilutions indicate recommended starting dilutions and the optimal dilutions or concentrations should be determined by the scientist.	

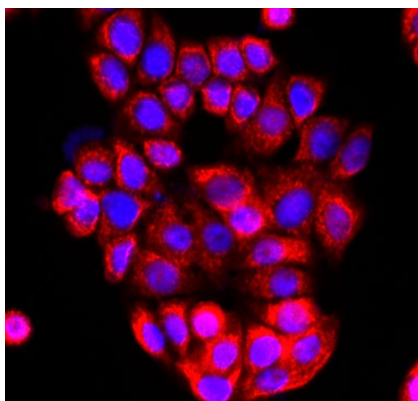
Properties

Form	Liquid
Purification	Affinity purified.
Buffer	PBS (pH 7.3), 0.01% Thimerosal and 50% Glycerol.
Preservative	0.01% Thimerosal
Stabilizer	50% Glycerol
Storage instruction	For continuous use, store undiluted antibody at 2-8°C for up to a week. For long-term storage, aliquot and store at -20°C. Storage in frost free freezers is not recommended. Avoid repeated freeze/thaw cycles. Suggest spin the vial prior to opening. The antibody solution should be gently mixed before use.
Note	For laboratory research only, not for drug, diagnostic or other use.

Bioinformation

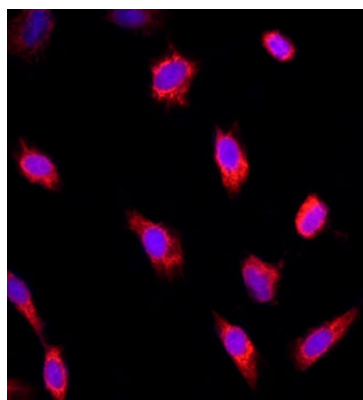
Gene Symbol	PI4KB
Gene Full Name	Phosphatidylinositol 4-Kinase Beta
Background	Enables 1-phosphatidylinositol 4-kinase activity and 14-3-3 protein binding activity. Predicted to be involved in phosphatidylinositol phosphate biosynthetic process and phosphatidylinositol-mediated signaling. Located in Golgi membrane.
Function	Phosphorylates phosphatidylinositol (PI) in the first committed step in the production of the second messenger inositol-1,4,5,-trisphosphate (PIP). May regulate Golgi disintegration/reorganization during mitosis, possibly via its phosphorylation. Involved in Golgi-to-plasma membrane trafficking.
Calculated Mw	91 kDa
PTM	Acetylation, Phosphoprotein
Cellular Localization	Cytoplasm, Endoplasmic reticulum, Golgi apparatus, Membrane, Mitochondrion, Mitochondrion outer membrane

Images



ARG44383 anti-PI4 kinase beta / PI4KB antibody ICC/IF image

Immunofluorescence: MCF7 stained with ARG44383 anti-PI4 kinase beta / PI4KB antibody at 1:200 dilution.



ARG44383 anti-PI4 kinase beta / PI4KB antibody ICC/IF image

Immunofluorescence: NIH/3T3 stained with ARG44383 anti-PI4 kinase beta / PI4KB antibody at 1:200 dilution.

ARG44383 anti-PI4 kinase beta / PI4KB antibody WB image

Western blot: Mouse thymus stained with ARG44383 anti-PI4 kinase beta / PI4KB antibody at 1:1000 dilution.

