

ARG44394 anti-LCTL antibody

Package: 50 µg
Store at: -20°C

Summary

Product Description	Rabbit Polyclonal antibody recognizes LCTL
Tested Reactivity	Hu, Ms, Rat
Tested Application	FACS, WB
Host	Rabbit
Clonality	Polyclonal
Isotype	IgG
Target Name	LCTL
Species	Human
Immunogen	Human LCTL recombinant protein (aa. sequence: D67-Q537).
Conjugation	Un-conjugated
Alternate Names	LCTL; Lactase Like; KLPH; KLG; Klotho/Lactase-Phlorizin Hydrolase-Related Protein; KL Lactase Phlorizin Hydrolase; Lactase-Like Protein

Application Instructions

Application table	Application	Dilution
	FACS	1-3 µg/1x10 ⁶ cells
	WB	0.25-0.5 µg/ml
Application Note	The dilutions indicate recommended starting dilutions and the optimal dilutions or concentrations should be determined by the scientist.	

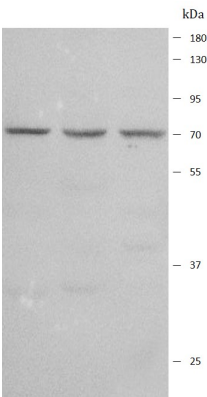
Properties

Form	Liquid
Purification	Affinity purified with Immunogen.
Buffer	0.9% NaCl, 0.2% Na ₂ HPO ₄ , 0.05% Sodium azide and 4% Trehalose.
Preservative	0.05% Sodium azide
Stabilizer	4% Trehalose
Concentration	0.5 mg/ml
Storage instruction	For continuous use, store undiluted antibody at 2-8°C for up to a week. For long-term storage, aliquot and store at -20°C or below. Storage in frost free freezers is not recommended. Avoid repeated freeze/thaw cycles. Suggest spin the vial prior to opening. The antibody solution should be gently mixed before use.
Note	For laboratory research only, not for drug, diagnostic or other use.

Bioinformation

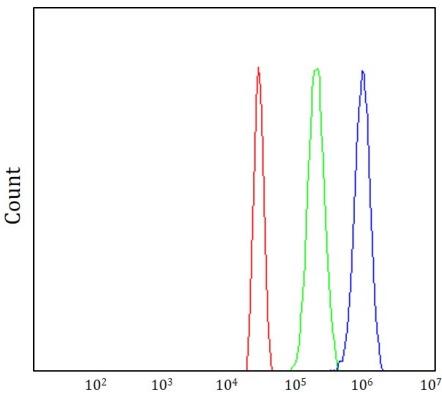
Gene Symbol	LCTL
Gene Full Name	Lactase Like
Background	This gene encodes a member of family 1 glycosidases. Glycosidases are enzymes that hydrolyze glycosidic bonds and are classified into families based on primary amino acid sequence. Most members of family 1 have two conserved glutamic acid residues, which are required for enzymatic activity. The mouse ortholog of this protein has been characterized and has a domain structure of an N-terminal signal peptide, glycosidase domain, transmembrane domain, and a short cytoplasmic tail. It lacks one of the conserved glutamic acid residues important for catalysis, and its function remains to be determined (PMID: 12084582). Alternative splicing results in multiple transcript variants.
Function	Plays a role in formation of the lens suture in the eye, which is important for normal optical properties of the lens.
Calculated Mw	65 kDa
PTM	Glycoprotein
Cellular Localization	Endoplasmic reticulum, Membrane

Images



ARG44394 anti-LCTL antibody WB image

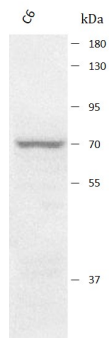
Western blot: A549, A431 and MCF-7 stained with ARG44394 anti-LCTL antibody at 0.5 µg/mL dilution.



ARG44394 anti-LCTL antibody FACS image

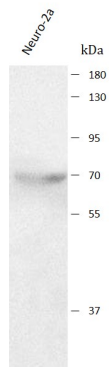
Flow Cytometry: HepG2 stained with ARG44394 anti-LCTL antibody at 1 µg/10⁶ cells dilution.

ARG44394 anti-LCTL antibody WB image



Western blot: C6 stained with ARG44394 anti-LCTL antibody at 0.5 $\mu\text{g}/\text{mL}$ dilution.

ARG44394 anti-LCTL antibody WB image



Western blot: Neuro-2a stained with ARG44394 anti-LCTL antibody at 0.5 $\mu\text{g}/\text{mL}$ dilution.