

ARG44395 anti-MZB1 antibody

Package: 50 µg
Store at: -20°C

Summary

Product Description	Rabbit Polyclonal antibody recognizes MZB1
Tested Reactivity	Hu
Tested Application	FACS, ICC/IF, IHC-P, WB
Host	Rabbit
Clonality	Polyclonal
Isotype	IgG
Target Name	MZB1
Species	Human
Immunogen	Human MZB1 recombinant protein (aa. sequence: D23-L189).
Conjugation	Un-conjugated
Alternate Names	MZB1; Marginal Zone B And B1 Cell Specific Protein; MEDA-7; PACAP; HSPC190; PERp1; Plasma Cell-Induced Resident Endoplasmic Reticulum Protein; Mesenteric Oestrogen-Dependent Adipose Gene- 7; Marginal Zone B- And B1-Cell-Specific Protein; Mesenteric Estrogen-Dependent Adipose 7; Plasma Cell-Induced Resident ER Protein; Proapoptotic Caspase Adaptor Protein; Proapoptotic Caspase Adapter Protein; Plasma Cell-Induced ER Protein 1

Application Instructions

Application table	Application	Dilution
	FACS	1-3 µg/1x10 ⁶ cells
	ICC/IF	5 µg/ml
	IHC-P	1-2 µg/ml
	WB	0.1-0.25 µg/ml
Application Note	The dilutions indicate recommended starting dilutions and the optimal dilutions or concentrations should be determined by the scientist.	

Properties

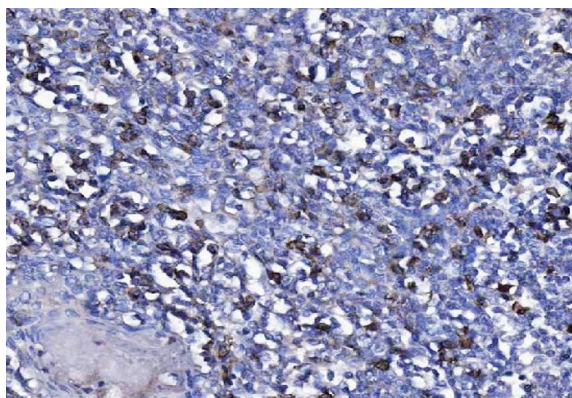
Form	Liquid
Purification	Affinity purified with Immunogen.
Buffer	0.9% NaCl, 0.2% Na ₂ HPO ₄ , 0.05% Sodium azide and 4% Trehalose.
Preservative	0.05% Sodium azide
Stabilizer	4% Trehalose
Concentration	0.5 mg/ml

Storage instruction	For continuous use, store undiluted antibody at 2-8°C for up to a week. For long-term storage, aliquot and store at -20°C or below. Storage in frost free freezers is not recommended. Avoid repeated freeze/thaw cycles. Suggest spin the vial prior to opening. The antibody solution should be gently mixed before use.
Note	For laboratory research only, not for drug, diagnostic or other use.

Bioinformation

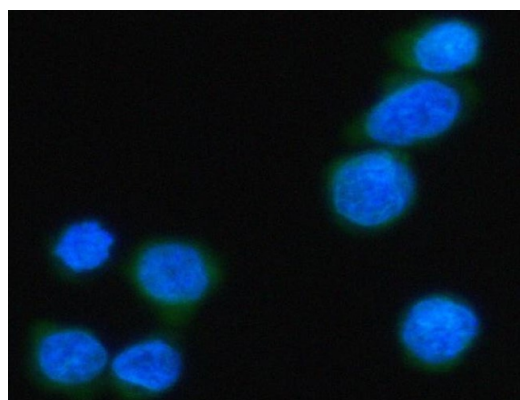
Gene Symbol	MZB1
Gene Full Name	Marginal Zone B And B1 Cell Specific Protein
Background	Involved in positive regulation of cell population proliferation. Located in cytoplasm and extracellular region.
Function	Associates with immunoglobulin M (IgM) heavy and light chains and promotes IgM assembly and secretion. May exert its effect by acting as a molecular chaperone or as an oxidoreductase as it displays a low level of oxidoreductase activity.
Calculated Mw	21 kDa
PTM	Disulfide bond
Cellular Localization	Cytoplasm, Endoplasmic reticulum, Secreted

Images



ARG44395 anti-MZB1 antibody IHC-P image

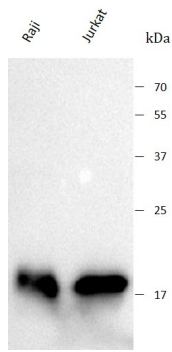
Immunohistochemistry: Human tonsil stained with ARG44395 anti-MZB1 antibody at 2 µg/mL dilution.



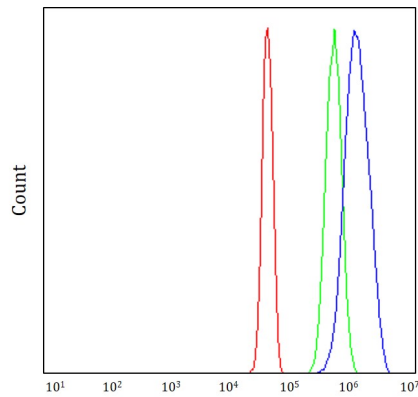
ARG44395 anti-MZB1 antibody ICC/IF image

Immunofluorescence: Jurkat stained with ARG44395 anti-MZB1 antibody at 5 µg/mL dilution.

ARG44395 anti-MZB1 antibody WB image



Western blot: Raji and Jurkat stained with ARG44395 anti-MZB1 antibody at 0.25 $\mu\text{g}/\text{mL}$ dilution.



ARG44395 anti-MZB1 antibody FACS image

Flow Cytometry: JK stained with ARG44395 anti-MZB1 antibody at 1 $\mu\text{g}/10^6$ cells dilution.