

ARG44396 anti-L3MBTL2 antibody

Package: 50 µg
Store at: -20°C

Summary

Product Description	Rabbit Polyclonal antibody recognizes L3MBTL2
Tested Reactivity	Hu
Tested Application	ICC/IF, IHC-P, WB
Host	Rabbit
Clonality	Polyclonal
Isotype	IgG
Target Name	L3MBTL2
Species	Human
Immunogen	Human L3MBTL2 recombinant protein (aa. sequence: E208-Q701).
Conjugation	Un-conjugated
Alternate Names	L3MBTL2; L3MBTL Histone Methyl-Lysine Binding Protein 2; L3MBTL2, Polycomb Repressive Complex 1 Subunit; Lethal(3)Malignant Brain Tumor-Like Protein 2; H-L(3)Mbt-Like Protein 2; L(3)Mbt-Like Protein 2

Application Instructions

Application table	Application	Dilution
	ICC/IF	5 µg/ml
	IHC-P	2-5 µg/ml
	WB	0.25-0.5 µg/ml
Application Note	The dilutions indicate recommended starting dilutions and the optimal dilutions or concentrations should be determined by the scientist.	

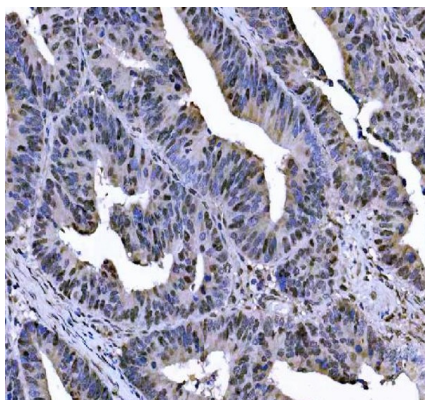
Properties

Form	Liquid
Purification	Affinity purified with Immunogen.
Buffer	0.9% NaCl, 0.2% Na ₂ HPO ₄ , 0.05% Sodium azide and 4% Trehalose.
Preservative	0.05% Sodium azide
Stabilizer	4% Trehalose
Concentration	0.5 mg/ml
Storage instruction	For continuous use, store undiluted antibody at 2-8°C for up to a week. For long-term storage, aliquot and store at -20°C or below. Storage in frost free freezers is not recommended. Avoid repeated freeze/thaw cycles. Suggest spin the vial prior to opening. The antibody solution should be gently mixed before use.

Bioinformation

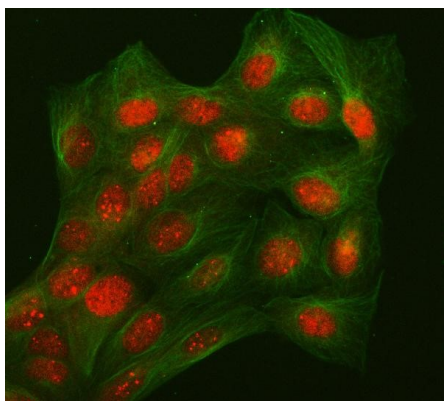
Gene Symbol	L3MBTL2
Gene Full Name	L3MBTL Histone Methyl-Lysine Binding Protein 2
Background	Enables methylated histone binding activity. Predicted to be involved in negative regulation of transcription, DNA-templated. Predicted to act upstream of or within several processes, including ectoderm development; regulation of histone modification; and stem cell proliferation. Located in nucleus.
Function	Putative Polycomb group (PcG) protein. PcG proteins maintain the transcriptionally repressive state of genes, probably via a modification of chromatin, rendering it heritably changed in its expressibility. Its association with a chromatin-remodeling complex suggests that it may contribute to prevent expression of genes that trigger the cell into mitosis. Binds to monomethylated and dimethylated 'Lys-20' on histone H4. Binds histone H3 peptides that are monomethylated or dimethylated on 'Lys-4', 'Lys-9' or 'Lys-27'.
Calculated Mw	79 kDa
PTM	Isopeptide bond, Phosphoprotein, Ubl conjugation
Cellular Localization	Nucleus

Images



ARG44396 anti-L3MBTL2 antibody IHC-P image

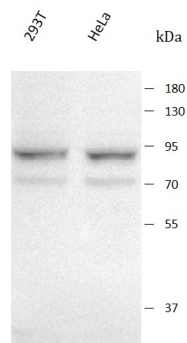
Immunohistochemistry: Human colorectal adenocarcinoma stained with ARG44396 anti-L3MBTL2 antibody at 2 µg/mL dilution.



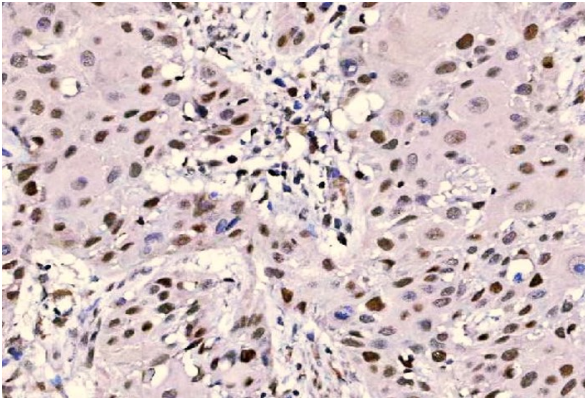
ARG44396 anti-L3MBTL2 antibody ICC/IF image

Immunofluorescence: U2OS stained with ARG44396 anti-L3MBTL2 antibody at 5 µg/mL dilution.

ARG44396 anti-L3MBTL2 antibody WB image



Western blot: 293T and HeLa stained with ARG44396 anti-L3MBTL2 antibody at 0.5 μ g/mL dilution.



ARG44396 anti-L3MBTL2 antibody IHC-P image

Immunohistochemistry: Human esophageal squamous carcinoma stained with ARG44396 anti-L3MBTL2 antibody at 2 μ g/mL dilution.