

## ARG44398 anti-LAGE3 antibody

Package: 50 µg  
Store at: -20°C

### Summary

Product Description	Rabbit Polyclonal antibody recognizes LAGE3
Tested Reactivity	Hu
Tested Application	ICC/IF, WB
Host	Rabbit
Clonality	Polyclonal
Isotype	IgG
Target Name	LAGE3
Species	Human
Immunogen	Human LAGE3 recombinant protein (aa. sequence: A40-R143).
Conjugation	Un-conjugated
Alternate Names	LAGE3; L Antigen Family Member 3; DXS9879E; ITBA2; ESO3; DXS9951E; CVG5; EKC/KEOPS Complex Subunit LAGE3; Protein ESO-3; Pcc1; DNA Segment On Chromosome X (Unique) 9879 Expressed Sequence; L Antigen Family, Member 3; Protein ITBA2

### Application Instructions

Application table	Application	Dilution
	ICC/IF	5 µg/ml
	WB	0.25-0.5 µg/ml
Application Note	The dilutions indicate recommended starting dilutions and the optimal dilutions or concentrations should be determined by the scientist.	

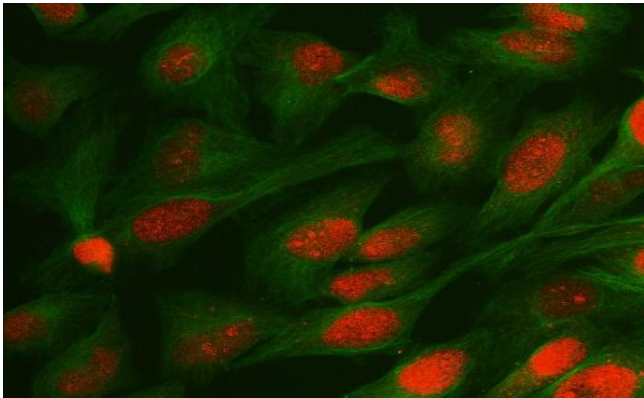
### Properties

Form	Liquid
Purification	Affinity purified with Immunogen.
Buffer	0.9% NaCl, 0.2% Na <sub>2</sub> HPO <sub>4</sub> , 0.05% Sodium azide and 4% Trehalose.
Preservative	0.05% Sodium azide
Stabilizer	4% Trehalose
Concentration	0.5 mg/ml
Storage instruction	For continuous use, store undiluted antibody at 2-8°C for up to a week. For long-term storage, aliquot and store at -20°C or below. Storage in frost free freezers is not recommended. Avoid repeated freeze/thaw cycles. Suggest spin the vial prior to opening. The antibody solution should be gently mixed before use.
Note	For laboratory research only, not for drug, diagnostic or other use.

Bioinformation

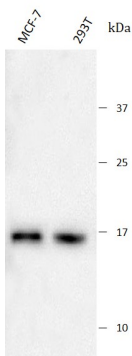
Gene Symbol	LAGE3
Gene Full Name	L Antigen Family Member 3
Background	This gene belongs to the ESO/LAGE gene family, members of which are clustered together on chromosome Xq28, and have similar exon-intron structures. Unlike the other family members which are normally expressed only in testis and activated in a wide range of human tumors, this gene is ubiquitously expressed in somatic tissues. The latter, combined with the finding that it is highly conserved in mouse and rat, suggests that the encoded protein is functionally important. An intronless pseudogene with high sequence similarity to this gene is located on chromosome 9.
Function	Component of the EKC/KEOPS complex that is required for the formation of a threonylcarbamoyl group on adenosine at position 37 (t6A37) in tRNAs that read codons beginning with adenine.
Calculated Mw	15 kDa
Cellular Localization	Cytoplasm, Nucleus

Images



ARG44398 anti-LAGE3 antibody ICC/IF image

Immunofluorescence: HeLa stained with ARG44398 anti-LAGE3 antibody at 5 µg/mL dilution.



ARG44398 anti-LAGE3 antibody WB image

Western blot: MCF-7 and 293T stained with ARG44398 anti-LAGE3 antibody at 0.5 µg/mL dilution.