

## ARG44399 anti-LEKR1 antibody

Package: 50 µg  
Store at: -20°C

### Summary

Product Description	Rabbit Polyclonal antibody recognizes LEKR1
Tested Reactivity	Hu, Ms, Rat
Tested Application	ICC/IF, IHC-P, WB
Host	Rabbit
Clonality	Polyclonal
Isotype	IgG
Target Name	LEKR1
Species	Human
Immunogen	Human LEKR1 recombinant protein (aa. sequence: K590-R688).
Conjugation	Un-conjugated
Alternate Names	LEKR1; Leucine, Glutamate And Lysine Rich 1

### Application Instructions

Application table	Application	Dilution
	ICC/IF	5 µg/ml
	IHC-P	2-5 µg/ml
	WB	0.1-0.25 µg/ml
Application Note	The dilutions indicate recommended starting dilutions and the optimal dilutions or concentrations should be determined by the scientist.	

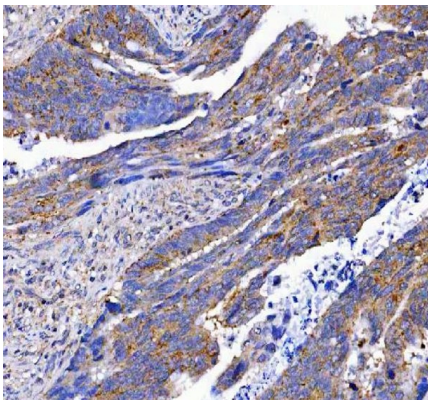
### Properties

Form	Liquid
Purification	Affinity purified with Immunogen.
Buffer	0.9% NaCl, 0.2% Na <sub>2</sub> HPO <sub>4</sub> , 0.05% Sodium azide and 4% Trehalose.
Preservative	0.05% Sodium azide
Stabilizer	4% Trehalose
Concentration	0.5 mg/ml
Storage instruction	For continuous use, store undiluted antibody at 2-8°C for up to a week. For long-term storage, aliquot and store at -20°C or below. Storage in frost free freezers is not recommended. Avoid repeated freeze/thaw cycles. Suggest spin the vial prior to opening. The antibody solution should be gently mixed before use.
Note	For laboratory research only, not for drug, diagnostic or other use.

Bioinformation

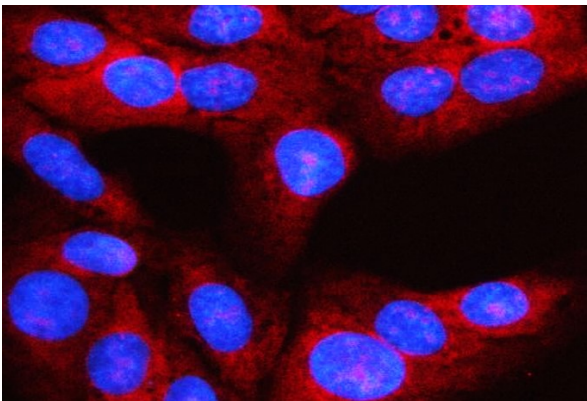
Gene Symbol	LEKR1
Gene Full Name	Leucine, Glutamate And Lysine Rich 1
Background	LEKR1 (Leucine, Glutamate And Lysine Rich 1) is a Protein Coding gene. Diseases associated with LEKR1 include Obsessive-Compulsive Personality Disorder. Gene Ontology (GO) annotations related to this gene include structural constituent of ribosome.
Calculated Mw	16 kDa

Images



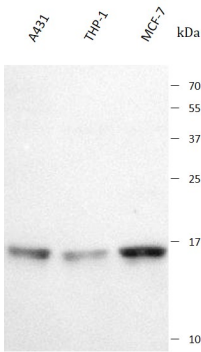
ARG44399 anti-LEKR1 antibody IHC-P image

Immunohistochemistry: Human colorectal adenocarcinoma stained with ARG44399 anti-LEKR1 antibody at 2 µg/mL dilution.



ARG44399 anti-LEKR1 antibody ICC/IF image

Immunofluorescence: U2OS stained with ARG44399 anti-LEKR1 antibody at 5 µg/mL dilution.



ARG44399 anti-LEKR1 antibody WB image

Western blot: A431, THP-1 and MCF-7 stained with ARG44399 anti-LEKR1 antibody at 0.25 µg/mL dilution.

ARG44399 anti-LEKR1 antibody WB image



Western blot: C6 stained with ARG44399 anti-LEKR1 antibody at 0.25 µg/mL dilution.

ARG44399 anti-LEKR1 antibody WB image



Western blot: RAW264.7 stained with ARG44399 anti-LEKR1 antibody at 0.25 µg/mL dilution.