

## ARG44401 anti-LGI4 antibody

Package: 50 µg  
Store at: -20°C

### Summary

Product Description	Rabbit Polyclonal antibody recognizes LGI4
Tested Reactivity	Hu, Ms, Rat
Tested Application	FACS, ICC/IF, IHC-P, WB
Host	Rabbit
Clonality	Polyclonal
Isotype	IgG
Target Name	LGI4
Species	Human
Immunogen	Human LGI4 recombinant protein (aa. sequence: E225-H531).
Conjugation	Un-conjugated
Alternate Names	LGI4; Leucine Rich Repeat LGI Family Member 4; Leucine-Rich Glioma-Inactivated Protein 4; Leucine-Rich Repeat LGI Family Member 4; LGI1-Like Protein 3; LGIL3

### Application Instructions

Application table	Application	Dilution
	FACS	1-3 µg/1x10 <sup>6</sup> cells
	ICC/IF	5 µg/ml
	IHC-P	2-5 µg/ml
	WB	0.25-0.5 µg/ml
Application Note	The dilutions indicate recommended starting dilutions and the optimal dilutions or concentrations should be determined by the scientist.	

### Properties

Form	Liquid
Purification	Affinity purified with Immunogen.
Buffer	0.9% NaCl, 0.2% Na <sub>2</sub> HPO <sub>4</sub> , 0.05% Sodium azide and 4% Trehalose.
Preservative	0.05% Sodium azide
Stabilizer	4% Trehalose
Concentration	0.5 mg/ml
Storage instruction	For continuous use, store undiluted antibody at 2-8°C for up to a week. For long-term storage, aliquot and store at -20°C or below. Storage in frost free freezers is not recommended. Avoid repeated freeze/thaw cycles. Suggest spin the vial prior to opening. The antibody solution should be gently mixed before use.

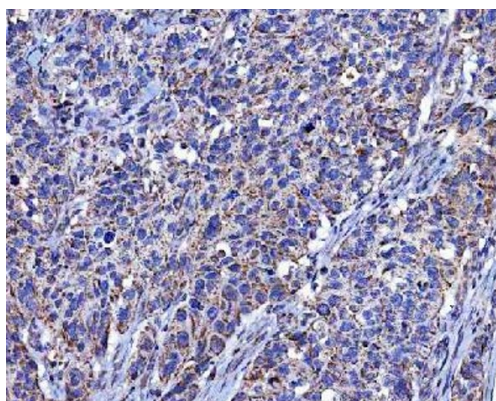
**Note**

For laboratory research only, not for drug, diagnostic or other use.

## Bioinformation

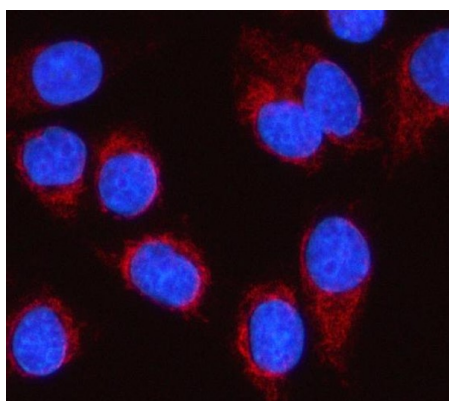
Gene Symbol	LGI4
Gene Full Name	Leucine Rich Repeat LGI Family Member 4
Background	Involved in regulation of myelination. Predicted to be located in extracellular region. Predicted to be active in extracellular space. Implicated in arthrogryposis multiplex congenita-1 and childhood absence epilepsy.
Function	Component of Schwann cell signaling pathway(s) that controls axon segregation and myelin formation.
Calculated Mw	59 kDa
PTM	Glycoprotein
Cellular Localization	Secreted

## Images



ARG44401 anti-LGI4 antibody IHC-P image

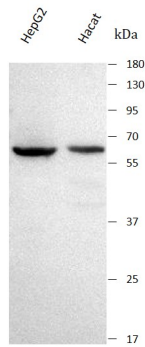
Immunohistochemistry: Human bladder urothelial carcinoma stained with ARG44401 anti-LGI4 antibody at 2 µg/mL dilution.



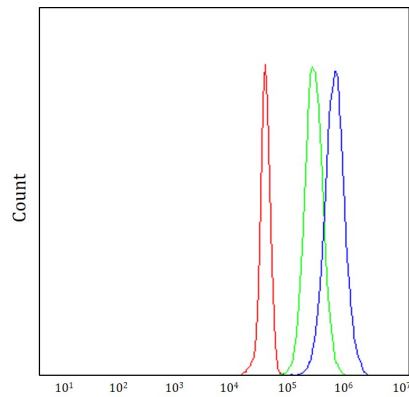
ARG44401 anti-LGI4 antibody ICC/IF image

Immunofluorescence: SiHa stained with ARG44401 anti-LGI4 antibody at 5 µg/mL dilution.

#### ARG44401 anti-LGI4 antibody WB image

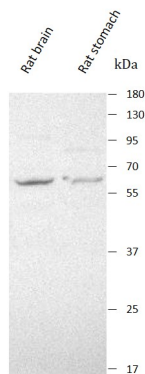


Western blot: HepG2 and Hecate stained with ARG44401 anti-LGI4 antibody at 0.5  $\mu\text{g}/\text{mL}$  dilution.



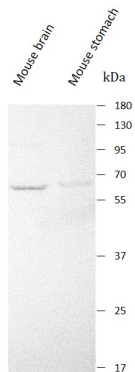
#### ARG44401 anti-LGI4 antibody FACS image

Flow Cytometry: JK stained with ARG44401 anti-LGI4 antibody at 1  $\mu\text{g}/10^6$  cells dilution.



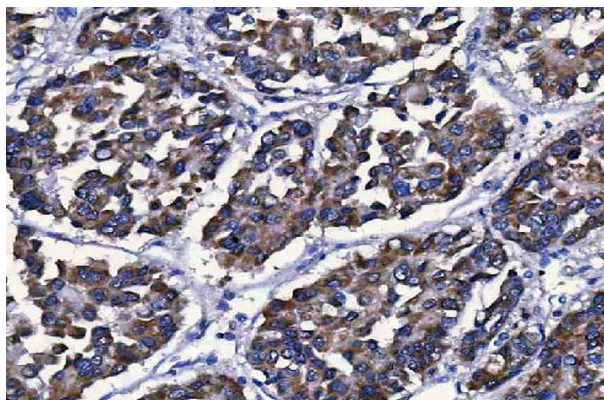
#### ARG44401 anti-LGI4 antibody WB image

Western blot: Rat brain and Rat stomach stained with ARG44401 anti-LGI4 antibody at 0.5  $\mu\text{g}/\text{mL}$  dilution.



#### ARG44401 anti-LGI4 antibody WB image

Western blot: Mouse brain and Mouse stomach stained with ARG44401 anti-LGI4 antibody at 0.5  $\mu\text{g}/\text{mL}$  dilution.



ARG44401 anti-LGI4 antibody IHC-P image

Immunohistochemistry: Human liver cancer stained with ARG44401 anti-LGI4 antibody at 2 µg/mL dilution.