

ARG44403 anti-LIN9 antibody

Package: 50 µg
Store at: -20°C

Summary

Product Description	Rabbit Polyclonal antibody recognizes LIN9
Tested Reactivity	Hu
Tested Application	ICC/IF, WB
Host	Rabbit
Clonality	Polyclonal
Isotype	IgG
Target Name	LIN9
Species	Human
Immunogen	Human LIN9 recombinant protein (aa. sequence: F127-D542).
Conjugation	Un-conjugated
Alternate Names	LIN9; Lin-9 DREAM MuvB Core Complex Component; TGS; Type I Interferon Receptor Beta Chain-Associated Protein; Beta Subunit-Associated Regulator Of Apoptosis; TUDOR Gene Similar Protein; Rb Related Pathway Actor; PRB-Associated Protein; Protein Lin-9 Homolog; BARA; Lin-9 Homolog (C. Elegans)

Application Instructions

Application table	Application	Dilution
	ICC/IF	5 µg/ml
	WB	0.25-0.5 µg/ml
Application Note	The dilutions indicate recommended starting dilutions and the optimal dilutions or concentrations should be determined by the scientist.	

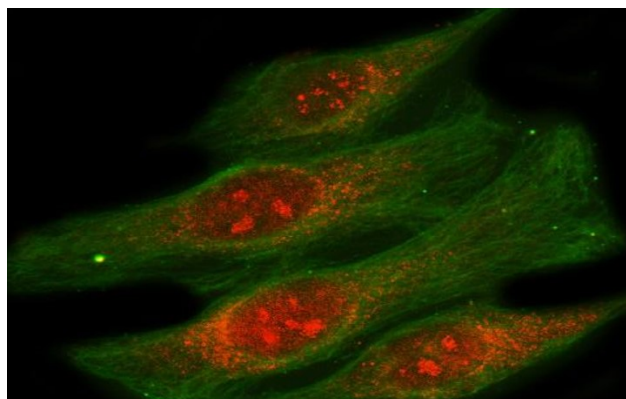
Properties

Form	Liquid
Purification	Affinity purified with Immunogen.
Buffer	0.9% NaCl, 0.2% Na ₂ HPO ₄ , 0.05% Sodium azide and 4% Trehalose.
Preservative	0.05% Sodium azide
Stabilizer	4% Trehalose
Concentration	0.5 mg/ml
Storage instruction	For continuous use, store undiluted antibody at 2-8°C for up to a week. For long-term storage, aliquot and store at -20°C or below. Storage in frost free freezers is not recommended. Avoid repeated freeze/thaw cycles. Suggest spin the vial prior to opening. The antibody solution should be gently mixed before use.

Bioinformation

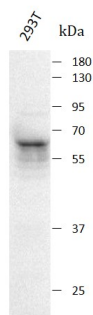
Gene Symbol	LIN9
Gene Full Name	Lin-9 DREAM MuvB Core Complex Component
Background	This gene encodes a tumor suppressor protein that inhibits DNA synthesis and oncogenic transformation through association with the retinoblastoma 1 protein. The encoded protein also interacts with a complex of other cell cycle regulators to repress cell cycle-dependent gene expression in non-dividing cells. Alternatively spliced transcript variants encoding multiple isoforms have been observed for this gene.
Function	Acts as a tumor suppressor. Inhibits DNA synthesis. Its ability to inhibit oncogenic transformation is mediated through its association with RB1. Plays a role in the expression of genes required for the G1/S transition.
Calculated Mw	62 kDa
PTM	Acetylation, Isopeptide bond, Phosphoprotein, Ubl conjugation
Cellular Localization	Nucleus

Images



ARG44403 anti-LIN9 antibody ICC/IF image

Immunofluorescence: HeLa stained with ARG44403 anti-LIN9 antibody at 5 µg/mL dilution.



ARG44403 anti-LIN9 antibody WB image

Western blot: 293T stained with ARG44403 anti-LIN9 antibody at 0.5 µg/mL dilution.