

ARG44408 anti-SLC38A9 antibody

Package: 50 µg
Store at: -20°C

Summary

Product Description	Rabbit Polyclonal antibody recognizes SLC38A9
Tested Reactivity	Hu, Ms, Rat
Tested Application	FACS, ICC/IF, WB
Host	Rabbit
Clonality	Polyclonal
Isotype	IgG
Target Name	SLC38A9
Species	Human
Immunogen	Human SLC38A9 recombinant protein (aa. sequence: D33-Q450).
Conjugation	Un-conjugated
Alternate Names	SLC38A9; Solute Carrier Family 38 Member 9; SNAT9; Sodium-Coupled Neutral Amino Acid Transporter 9; Neutral Amino Acid Transporter 9; Up-Regulated In Lung Cancer 11; FLJ90709; URLC11; Putative Sodium-Coupled Neutral Amino Acid Transporter 9; Solute Carrier Family 38, Member 9

Application Instructions

Application table	Application	Dilution
	FACS	1-3 µg/1x10 ⁶ cells
	ICC/IF	5 µg/ml
	WB	0.25-0.5 µg/ml
Application Note	The dilutions indicate recommended starting dilutions and the optimal dilutions or concentrations should be determined by the scientist.	

Properties

Form	Liquid
Purification	Affinity purified with Immunogen.
Buffer	0.9% NaCl, 0.2% Na ₂ HPO ₄ , 0.05% Sodium azide and 4% Trehalose.
Preservative	0.05% Sodium azide
Stabilizer	4% Trehalose
Concentration	0.5 mg/ml
Storage instruction	For continuous use, store undiluted antibody at 2-8°C for up to a week. For long-term storage, aliquot and store at -20°C or below. Storage in frost free freezers is not recommended. Avoid repeated freeze/thaw cycles. Suggest spin the vial prior to opening. The antibody solution should be gently mixed before use.

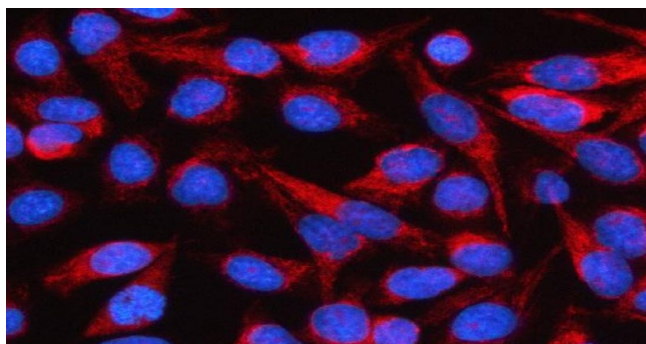
Note

For laboratory research only, not for drug, diagnostic or other use.

Bioinformation

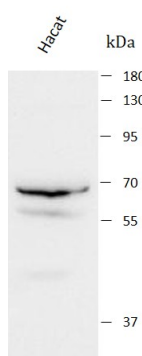
Gene Symbol	SLC38A9
Gene Full Name	Solute Carrier Family 38 Member 9
Background	Enables L-arginine transmembrane transporter activity and L-leucine transmembrane transporter activity. Involved in amino acid transmembrane transport; cellular response to amino acid stimulus; and positive regulation of TOR signaling. Located in late endosome and lysosomal membrane. Is integral component of lysosomal membrane. Colocalizes with Ragulator complex.
Function	Lysosomal amino acid transporter involved in the activation of mTORC1 in response to amino acid levels.
Calculated Mw	64 kDa
PTM	Disulfide bond, Glycoprotein
Cellular Localization	Endosome, Lysosome, Membrane

Images



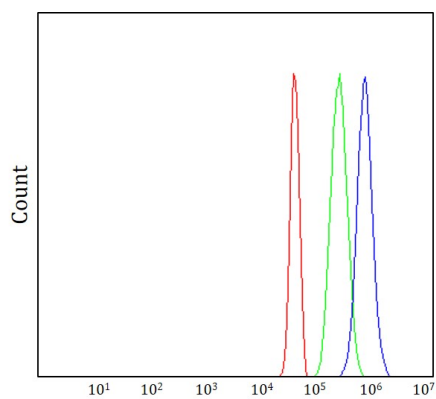
ARG44408 anti-SLC38A9 antibody ICC/IF image

Immunofluorescence: HeLa stained with ARG44408 anti-SLC38A9 antibody at 5 µg/mL dilution.



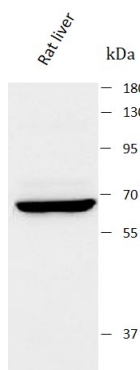
ARG44408 anti-SLC38A9 antibody WB image

Western blot: Hacat stained with ARG44408 anti-SLC38A9 antibody at 0.5 µg/mL dilution.



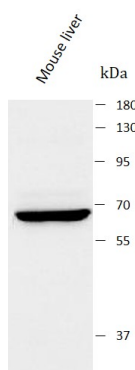
ARG44408 anti-SLC38A9 antibody FACS image

Flow Cytometry: JK stained with ARG44408 anti-SLC38A9 antibody at $1\text{ }\mu\text{g}/10^6$ cells dilution.



ARG44408 anti-SLC38A9 antibody WB image

Western blot: Rat liver stained with ARG44408 anti-SLC38A9 antibody at $0.5\text{ }\mu\text{g}/\text{mL}$ dilution.



ARG44408 anti-SLC38A9 antibody WB image

Western blot: Mouse liver stained with ARG44408 anti-SLC38A9 antibody at $0.5\text{ }\mu\text{g}/\text{mL}$ dilution.