

## ARG44426 anti-MTF1 antibody

Package: 50 µg  
Store at: -20°C

### Summary

Product Description	Rabbit Polyclonal antibody recognizes MTF1
Tested Reactivity	Hu, Ms, Rat
Tested Application	FACS, ICC/IF, IHC-P, WB
Host	Rabbit
Clonality	Polyclonal
Isotype	IgG
Target Name	MTF1
Species	Human
Immunogen	Human MTF1 recombinant protein (aa. sequence: A28-D634).
Conjugation	Un-conjugated
Alternate Names	MTF1; Metal Regulatory Transcription Factor 1; MRE-Binding Transcription Factor; Transcription Factor MTF-1; Metal-Responsive Transcription Factor 1; MRE-Binding Transcription Factor-1; Zinc Regulatory Factor; MTF-1; ZRF

### Application Instructions

Application table	Application	Dilution
	FACS	1-3 µg/1x10 <sup>6</sup> cells
	ICC/IF	5 µg/ml
	IHC-P	2-5 µg/ml
	WB	0.1-0.25 µg/ml
Application Note	The dilutions indicate recommended starting dilutions and the optimal dilutions or concentrations should be determined by the scientist.	

### Properties

Form	Liquid
Purification	Affinity purified with Immunogen.
Buffer	0.9% NaCl, 0.2% Na <sub>2</sub> HPO <sub>4</sub> , 0.05% Sodium azide and 4% Trehalose.
Preservative	0.05% Sodium azide
Stabilizer	4% Trehalose
Concentration	0.5 mg/ml
Storage instruction	For continuous use, store undiluted antibody at 2-8°C for up to a week. For long-term storage, aliquot and store at -20°C or below. Storage in frost free freezers is not recommended. Avoid repeated freeze/thaw cycles. Suggest spin the vial prior to opening. The antibody solution should be gently mixed

before use.

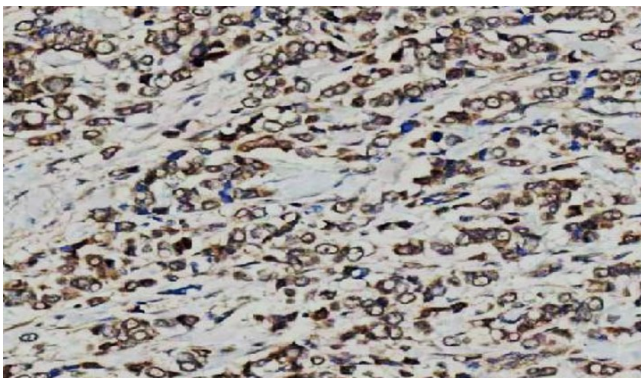
Note

For laboratory research only, not for drug, diagnostic or other use.

## Bioinformation

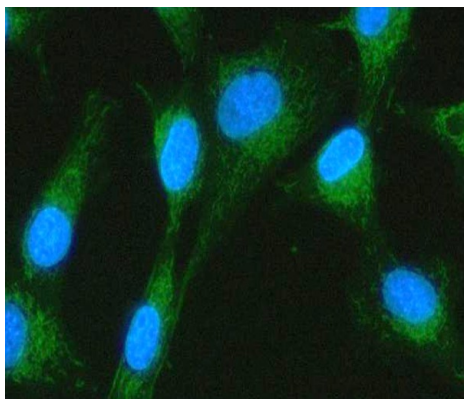
Gene Symbol	MTF1
Gene Full Name	Metal Regulatory Transcription Factor 1
Background	This gene encodes a transcription factor that induces expression of metallothioneins and other genes involved in metal homeostasis in response to heavy metals such as cadmium, zinc, copper, and silver. The protein is a nucleocytoplasmic shuttling protein that accumulates in the nucleus upon heavy metal exposure and binds to promoters containing a metal-responsive element (MRE).
Function	Zinc-dependent transcriptional regulator of cellular adaption to conditions of exposure to heavy metals.
Calculated Mw	81 kDa
PTM	Acetylation, Phosphoprotein
Cellular Localization	Cytoplasm, Nucleus

## Images



ARG44426 anti-MTF1 antibody IHC-P image

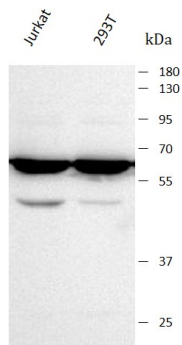
Immunohistochemistry: Human breast cancer stained with ARG44426 anti-MTF1 antibody at 2 µg/mL dilution.



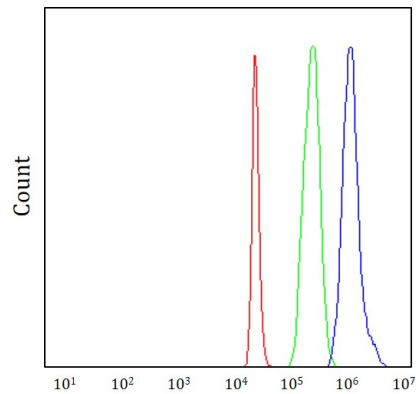
ARG44426 anti-MTF1 antibody ICC/IF image

Immunofluorescence: U87 stained with ARG44426 anti-MTF1 antibody at 5 µg/mL dilution.

#### ARG44426 anti-MTF1 antibody WB image



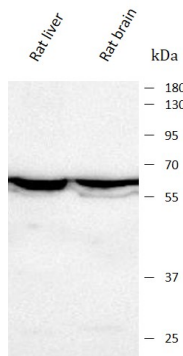
Western blot: Jurkat and 293T stained with ARG44426 anti-MTF1 antibody at 0.5  $\mu\text{g}/\text{mL}$  dilution.



#### ARG44426 anti-MTF1 antibody FACS image

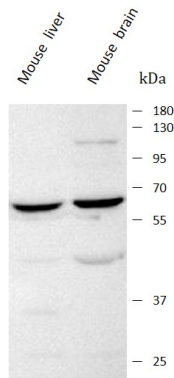
Flow Cytometry: 293T stained with ARG44426 anti-MTF1 antibody at 1  $\mu\text{g}/10^6$  cells dilution.

#### ARG44426 anti-MTF1 antibody WB image



Western blot: Rat liver and Rat brain stained with ARG44426 anti-MTF1 antibody at 0.5  $\mu\text{g}/\text{mL}$  dilution.

#### ARG44426 anti-MTF1 antibody WB image



Western blot: Mouse liver and Mouse brain stained with ARG44426 anti-MTF1 antibody at 0.5  $\mu\text{g}/\text{mL}$  dilution.