

ARG44429 anti-LSG1 antibody

Package: 50 µg
Store at: -20°C

Summary

Product Description	Rabbit Polyclonal antibody recognizes LSG1
Tested Reactivity	Hu, Ms, Rat
Tested Application	FACS, ICC/IF, IHC-P, WB
Host	Rabbit
Clonality	Polyclonal
Isotype	IgG
Target Name	LSG1
Species	Human
Immunogen	Human LSG1 recombinant protein (aa. sequence: D73-D578).
Conjugation	Un-conjugated
Alternate Names	LSG1; Large 60S Subunit Nuclear Export GTPase 1; Large Subunit GTPase 1 Homolog; FLJ11301; HLsg1;; Large Subunit GTPase 1 Homolog (S. Cerevisiae)

Application Instructions

Application table	Application	Dilution
	FACS	1-3 µg/1x10 ⁶ cells
	ICC/IF	5 µg/ml
	IHC-P	2-5 µg/ml
	WB	0.25-0.5 µg/ml
Application Note	The dilutions indicate recommended starting dilutions and the optimal dilutions or concentrations should be determined by the scientist.	

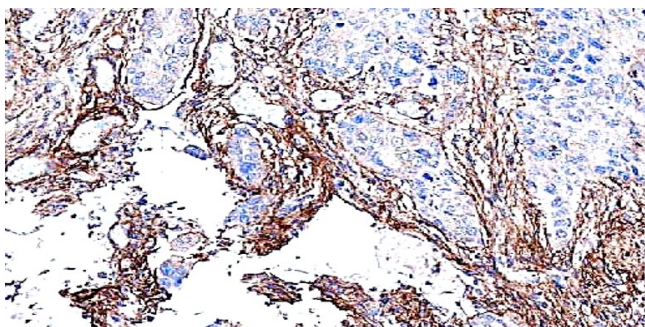
Properties

Form	Liquid
Purification	Affinity purification with immunogen.
Buffer	0.9% NaCl, 0.2% Na ₂ HPO ₄ , 0.05% Sodium azide and 4% Trehalose.
Preservative	0.05% Sodium azide
Stabilizer	4% Trehalose
Concentration	0.5 mg/ml
Storage instruction	For continuous use, store undiluted antibody at 2-8°C for up to a week. For long-term storage, aliquot and store at -20°C or below. Storage in frost free freezers is not recommended. Avoid repeated freeze/thaw cycles. Suggest spin the vial prior to opening. The antibody solution should be gently mixed before use.

Bioinformation

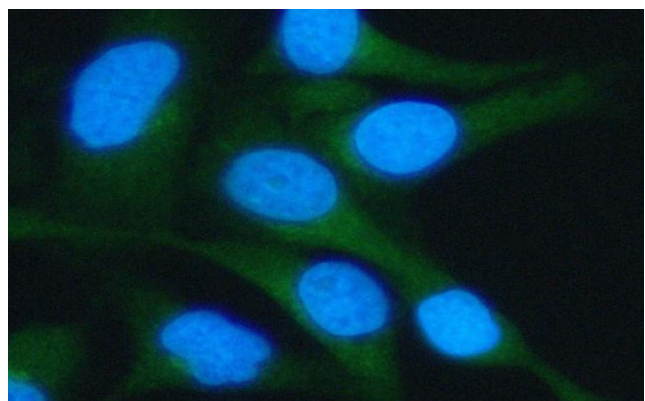
Gene Symbol	LSG1
Gene Full Name	Large 60S Subunit Nuclear Export GTPase 1
Background	This gene encodes a protein related to the yeast large subunit GTPase 1. The encoded protein is necessary for cell viability and may localize in the endoplasmic reticulum, nucleus and cytoplasm.
Function	GTPase required for the XPO1/CRM1-mediated nuclear export of the 60S ribosomal subunit. Probably acts by mediating the release of NMD3 from the 60S ribosomal subunit after export into the cytoplasm (Probable).
Calculated Mw	75 kDa
PTM	Phosphoprotein
Cellular Localization	Cytoplasm, Endoplasmic reticulum, Nucleus

Images



ARG44429 anti-LSG1 antibody IHC-P image

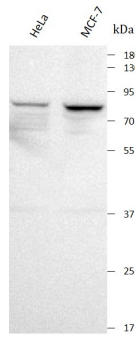
Immunohistochemistry: Human esophageal squamous carcinoma stained with ARG44429 anti-LSG1 antibody at 2 µg/mL dilution.



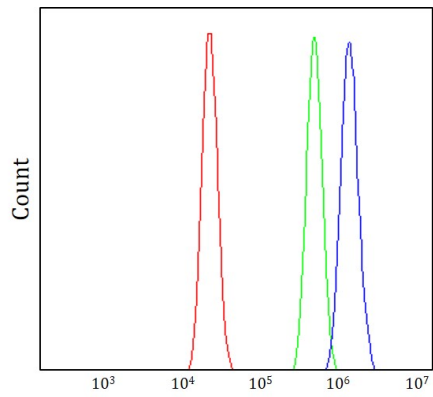
ARG44429 anti-LSG1 antibody ICC/IF image

Immunofluorescence: HeLa stained with ARG44429 anti-LSG1 antibody at 5 µg/mL dilution.

ARG44429 anti-LSG1 antibody WB image



Western blot: HeLa and MCF-7 stained with ARG44429 anti-LSG1 antibody at 0.5 $\mu\text{g}/\text{mL}$ dilution.



ARG44429 anti-LSG1 antibody FACS image

Flow Cytometry: RT4 stained with ARG44429 anti-LSG1 antibody at 1 $\mu\text{g}/10^6$ cells dilution.