

**ARG44431**  
**anti-LYPD6 antibody**Package: 50 µg  
Store at: -20°C

### Summary

Product Description	Rabbit Polyclonal antibody recognizes LYPD6
Tested Reactivity	Hu
Tested Application	FACS, WB
Host	Rabbit
Clonality	Polyclonal
Isotype	IgG
Target Name	LYPD6
Species	Human
Immunogen	Human LYPD6 recombinant protein (aa. sequence: D83-K714).
Conjugation	Un-conjugated
Alternate Names	LYPD6; LY6/PLAUR Domain Containing 6; Ly6/PLAUR Domain-Containing Protein 6

### Application Instructions

Application table	Application	Dilution
	FACS	1-3 µg/1x10 <sup>6</sup> cells
	WB	0.25-0.5 µg/ml
Application Note	The dilutions indicate recommended starting dilutions and the optimal dilutions or concentrations should be determined by the scientist.	

### Properties

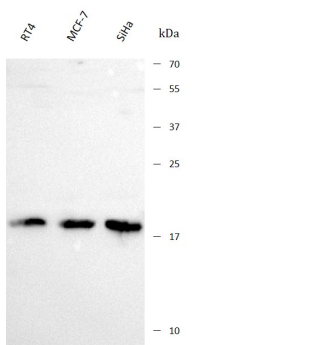
Form	Liquid
Purification	Affinity purified with Immunogen.
Buffer	0.9% NaCl, 0.2% Na <sub>2</sub> HPO <sub>4</sub> , 0.05% Sodium azide and 4% Trehalose.
Preservative	0.05% Sodium azide
Stabilizer	4% Trehalose
Concentration	0.5 mg/ml
Storage instruction	For continuous use, store undiluted antibody at 2-8°C for up to a week. For long-term storage, aliquot and store at -20°C or below. Storage in frost free freezers is not recommended. Avoid repeated freeze/thaw cycles. Suggest spin the vial prior to opening. The antibody solution should be gently mixed before use.
Note	For laboratory research only, not for drug, diagnostic or other use.

Bioinformation

Gene Symbol	LYPD6
Gene Full Name	LY6/PLAUR Domain Containing 6
Background	Members of the LY6 protein family (see SLURP1; MIM 606119), such as LYPD6, have at least one 80-amino acid LU domain that contains 10 conserved cysteines with a defined disulfide-bonding pattern.
Function	Acts as a modulator of nicotinic acetylcholine receptors (nAChRs) function in the brain.
Calculated Mw	19 kDa
PTM	Disulfide bond, Glycoprotein, GPI-anchor, Lipoprotein

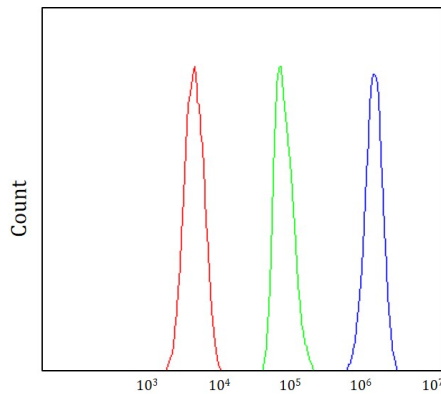
Images

ARG44431 anti-LYPD6 antibody WB image



Western blot: RT4, MCF-7 and SiHa stained with ARG44431 anti-LYPD6 antibody at 0.5  $\mu\text{g}/\text{mL}$  dilution.

ARG44431 anti-LYPD6 antibody FACS image



Flow Cytometry: SH-SY5Y stained with ARG44431 anti-LYPD6 antibody at  $1\text{ }\mu\text{g}/10^6$  cells dilution.