

ARG44432 anti-LYPLA1 antibody

Package: 50 µg
Store at: -20°C

Summary

Product Description	Rabbit Polyclonal antibody recognizes LYPLA1
Tested Reactivity	Hu, Ms, Rat
Tested Application	FACS, IHC-P, WB
Host	Rabbit
Clonality	Polyclonal
Isotype	IgG
Target Name	LYPLA1
Species	Human
Immunogen	Human LYPLA1 recombinant protein
Conjugation	Un-conjugated
Alternate Names	LYPLA1; Lysophospholipase 1; APT-1; LPL1; Acyl-Protein Thioesterase 1; Lysophospholipase I; Palmitoyl-Protein Hydrolase; LysoPLA I; LPL-I; HAPT1; APT1

Application Instructions

Application table	Application	Dilution
	FACS	1-3 µg/1x10 ⁶ cells
	IHC-P	2-5 µg/ml
	WB	0.25-0.5 µg/ml
Application Note	The dilutions indicate recommended starting dilutions and the optimal dilutions or concentrations should be determined by the scientist.	

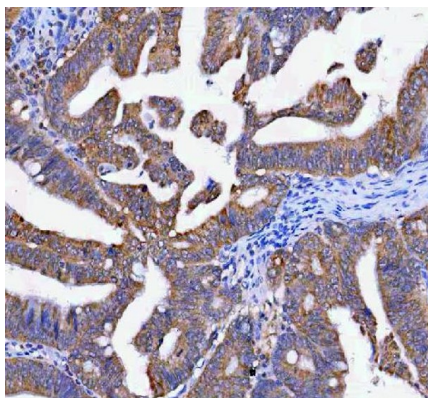
Properties

Form	Liquid
Purification	Affinity purified with Immunogen.
Buffer	0.9% NaCl, 0.2% Na ₂ HPO ₄ , 0.05% Sodium azide and 4% Trehalose.
Preservative	0.05% Sodium azide
Stabilizer	4% Trehalose
Concentration	0.5 mg/ml
Storage instruction	For continuous use, store undiluted antibody at 2-8°C for up to a week. For long-term storage, aliquot and store at -20°C or below. Storage in frost free freezers is not recommended. Avoid repeated freeze/thaw cycles. Suggest spin the vial prior to opening. The antibody solution should be gently mixed before use.

Bioinformation

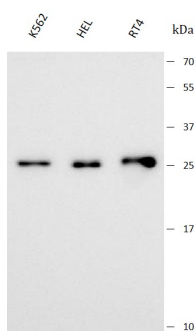
Gene Symbol	LYPLA1
Gene Full Name	Lysophospholipase 1
Background	This gene encodes a member of the alpha/beta hydrolase superfamily. The encoded protein functions as a homodimer, exhibiting both depalmitoylating as well as lysophospholipase activity, and may be involved in Ras localization and signaling. Alternate splicing results in multiple transcript variants. Pseudogenes of this gene have been defined on chromosomes 4, 6, and 7.
Function	Acts as a acyl-protein thioesterase.
Calculated Mw	25 kDa
PTM	Acetylation
Cellular Localization	Cell membrane, Cytoplasm, Endoplasmic reticulum, Membrane, Nucleus

Images



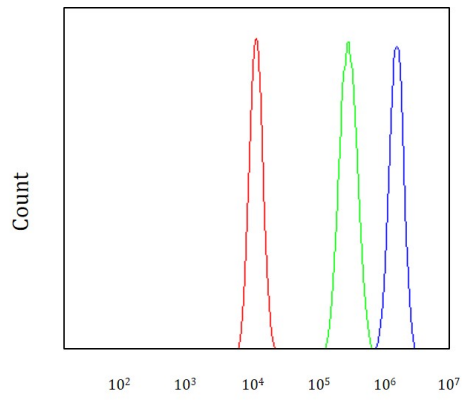
ARG44432 anti-LYPLA1 antibody IHC-P image

Immunohistochemistry: Human rectum adenocarcinoma stained with ARG44432 anti-LYPLA1 antibody at 2 µg/mL dilution.



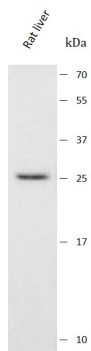
ARG44432 anti-LYPLA1 antibody WB image

Western blot: K562, HEL and RT4 stained with ARG44432 anti-LYPLA1 antibody at 0.5 µg/mL dilution.



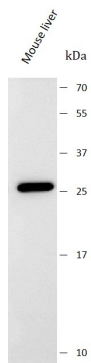
ARG44432 anti-LYPLA1 antibody FACS image

Flow Cytometry: HEL stained with ARG44432 anti-LYPLA1 antibody at $1\ \mu\text{g}/10^6$ cells dilution.



ARG44432 anti-LYPLA1 antibody WB image

Western blot: Rat live stained with ARG44432 anti-LYPLA1 antibody at $0.5\ \mu\text{g}/\text{mL}$ dilution.



ARG44432 anti-LYPLA1 antibody WB image

Western blot: Mouse live stained with ARG44432 anti-LYPLA1 antibody at $0.5\ \mu\text{g}/\text{mL}$ dilution.