

ARG44435 anti-JOSD2 / Josephin2 antibody

Package: 50 µg
Store at: -20°C

Summary

Product Description	Rabbit Polyclonal antibody recognizes JOSD2 / Josephin2
Tested Reactivity	Hu, Ms, Rat
Tested Application	FACS, IHC-P, WB
Host	Rabbit
Clonality	Polyclonal
Isotype	IgG
Target Name	JOSD2 / Josephin2
Species	Human
Immunogen	Human JOSD2 / Josephin2 recombinant protein
Conjugation	Un-conjugated
Alternate Names	JOSD2; Josephin Domain Containing 2; SBB154; Josephin Domain-Containing Protein 2; Josephin-2

Application Instructions

Application table	Application	Dilution
	FACS	1-3 µg/1x10 ⁶ cells
	IHC-P	2-5 µg/ml
	WB	0.25-0.5 µg/ml
Application Note	The dilutions indicate recommended starting dilutions and the optimal dilutions or concentrations should be determined by the scientist.	

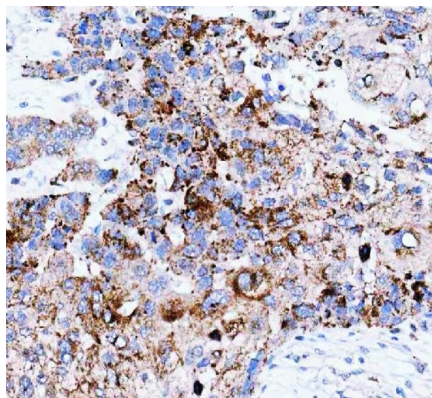
Properties

Form	Liquid
Purification	Affinity purified with Immunogen.
Buffer	0.9% NaCl, 0.2% Na ₂ HPO ₄ , 0.05% Sodium azide and 4% Trehalose.
Preservative	0.05% Sodium azide
Stabilizer	4% Trehalose
Concentration	0.5 mg/ml
Storage instruction	For continuous use, store undiluted antibody at 2-8°C for up to a week. For long-term storage, aliquot and store at -20°C or below. Storage in frost free freezers is not recommended. Avoid repeated freeze/thaw cycles. Suggest spin the vial prior to opening. The antibody solution should be gently mixed before use.
Note	For laboratory research only, not for drug, diagnostic or other use.

Bioinformation

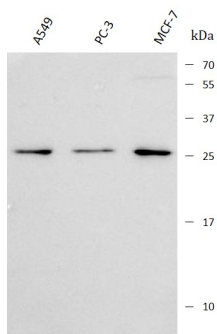
Gene Symbol	JOSD2
Gene Full Name	Josephin Domain Containing 2
Background	This gene encodes a protein containing a Josephin domain. Josephin domain-containing proteins are deubiquitinating enzymes which catalyze the hydrolysis of the bond between the C-terminal glycine of the ubiquitin peptide and protein substrates. Alternatively spliced transcript variants encoding multiple isoforms have been observed for this gene.
Function	Cleaves 'Lys-63'-linked poly-ubiquitin chains, and with lesser efficiency 'Lys-48'-linked poly-ubiquitin chains (in vitro). May act as a deubiquitinating enzyme.
Calculated Mw	21 kDa
Cellular Localization	Cytoplasm

Images



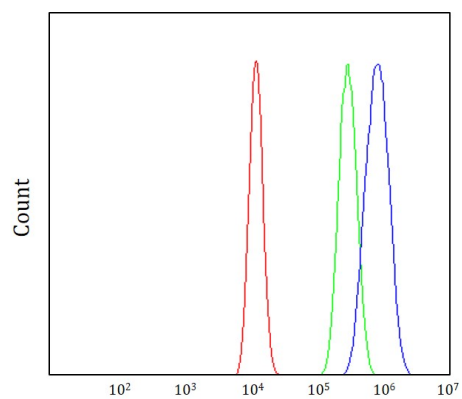
ARG44435 anti-JOSD2 / Josephin2 antibody IHC-P image

Immunohistochemistry: Human esophageal squamous carcinoma stained with ARG44435 anti-JOSD2 / Josephin2 antibody at 2 µg/mL dilution.



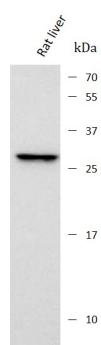
ARG44435 anti-JOSD2 / Josephin2 antibody WB image

Western blot: A549, PC-3 and MCF-7 stained with ARG44435 anti-JOSD2 / Josephin2 antibody at 0.5 µg/mL dilution.



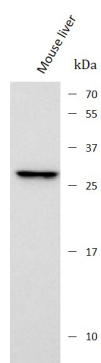
ARG44435 anti-JOSD2 / Josephin2 antibody FACS image

Flow Cytometry: HEL stained with ARG44435 anti-JOSD2 / Josephin2 antibody at $1 \mu\text{g}/10^6$ cells dilution.



ARG44435 anti-JOSD2 / Josephin2 antibody WB image

Western blot: Rat liver stained with ARG44435 anti-JOSD2 / Josephin2 antibody at $0.5 \mu\text{g}/\text{mL}$ dilution.



ARG44435 anti-JOSD2 / Josephin2 antibody WB image

Western blot: Mouse liver stained with ARG44435 anti-JOSD2 / Josephin2 antibody at $0.5 \mu\text{g}/\text{mL}$ dilution.