

ARG44439 anti-IFFO1 antibody

Package: 50 µg
Store at: -20°C

Summary

Product Description	Rabbit Polyclonal antibody recognizes IFFO1
Tested Reactivity	Hu, Ms, Rat
Tested Application	FACS, ICC/IF, IHC-P, WB
Host	Rabbit
Clonality	Polyclonal
Isotype	IgG
Target Name	IFFO1
Species	Human
Immunogen	Human IFFO1 recombinant protein
Conjugation	Un-conjugated
Alternate Names	IFFO1; Intermediate Filament Family Orphan 1; HOM-TES-103; IFFO; Non-Homologous End Joining Factor IFFO1; NHEJ Factor IFFO1; Intermediate Filament Family Orphan; Intermediate Filament-Like MGC:2625; Tumor Antigen HOM-TES-103

Application Instructions

Application table	Application	Dilution
	FACS	1-3 µg/1x10 ⁶ cells
	ICC/IF	5 µg/ml
	IHC-P	2-5 µg/ml
	WB	0.25-0.5 µg/ml
Application Note	The dilutions indicate recommended starting dilutions and the optimal dilutions or concentrations should be determined by the scientist.	

Properties

Form	Liquid
Purification	Affinity purified with Immunogen.
Buffer	0.9% NaCl, 0.2% Na ₂ HPO ₄ , 0.05% Sodium azide and 4% Trehalose.
Preservative	0.05% Sodium azide
Stabilizer	4% Trehalose
Concentration	0.5 mg/ml
Storage instruction	For continuous use, store undiluted antibody at 2-8°C for up to a week. For long-term storage, aliquot and store at -20°C or below. Storage in frost free freezers is not recommended. Avoid repeated freeze/thaw cycles. Suggest spin the vial prior to opening. The antibody solution should be gently mixed

before use.

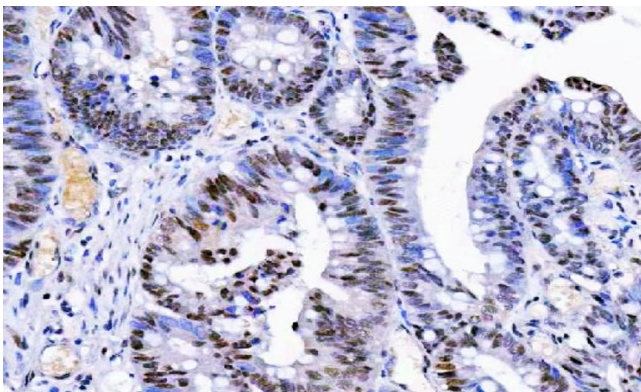
Note

For laboratory research only, not for drug, diagnostic or other use.

Bioinformation

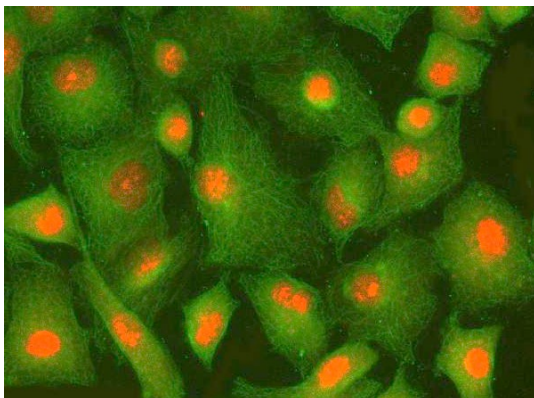
Gene Symbol	IFFO1
Gene Full Name	Intermediate Filament Family Orphan 1
Background	This gene is a member of the intermediate filament family. Intermediate filaments are proteins which are primordial components of the cytoskeleton and nuclear envelope. The proteins encoded by the members of this gene family are evolutionarily and structurally related but have limited sequence homology, with the exception of the central rod domain. Multiple alternatively spliced transcript variants encoding different isoforms have been found for this gene.
Function	Nuclear matrix protein involved in the immobilization of broken DNA ends and the suppression of chromosome translocation during DNA double-strand breaks (DSBs).
Calculated Mw	62 kDa
Cellular Localization	Intermediate filament, Membrane, Nucleus

Images



ARG44439 anti-IFFO1 antibody IHC-P image

Immunohistochemistry: Human rectum adenocarcinoma stained with ARG44439 anti-IFFO1 antibody at 2 µg/mL dilution.



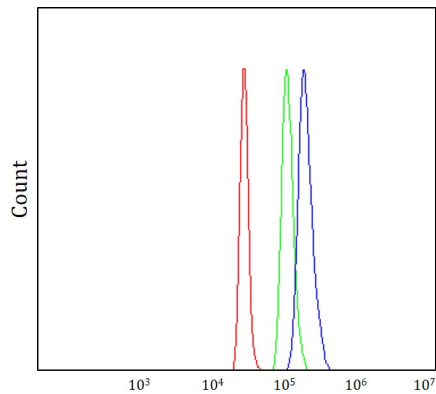
ARG44439 anti-IFFO1 antibody ICC/IF image

Immunofluorescence: A549 stained with ARG44439 anti-IFFO1 antibody at 5 µg/mL dilution.

ARG44439 anti-IFFO1 antibody WB image



Western blot: Jurkat and HepG2 stained with ARG44439 anti-IFFO1 antibody at 0.5 $\mu\text{g}/\text{mL}$ dilution.



ARG44439 anti-IFFO1 antibody FACS image

Flow Cytometry: SH-SY5Y stained with ARG44439 anti-IFFO1 antibody at 1 $\mu\text{g}/10^6$ cells dilution.

ARG44439 anti-IFFO1 antibody WB image



Western blot: Rat brain stained with ARG44439 anti-IFFO1 antibody at 0.5 $\mu\text{g}/\text{mL}$ dilution.

ARG44439 anti-IFFO1 antibody WB image



Western blot: Mouse brain stained with ARG44439 anti-IFFO1 antibody at 0.5 $\mu\text{g}/\text{mL}$ dilution.