

ARG44451 anti-PELI2 / Pellino2 antibody

Package: 50 µg
Store at: -20°C

Summary

Product Description	Rabbit Polyclonal antibody recognizes PELI2 / Pellino2
Tested Reactivity	Hu, Ms, Rat
Tested Application	FACS, ICC/IF, IHC-P, WB
Host	Rabbit
Clonality	Polyclonal
Isotype	IgG
Target Name	PELI2 / Pellino2
Species	Human
Immunogen	Human PELI2 / Pellino2 recombinant protein
Conjugation	Un-conjugated
Alternate Names	PELI2; Pellino E3 Ubiquitin Protein Ligase Family Member 2; RING-Type E3 Ubiquitin Transferase Pellino Homolog 2; E3 Ubiquitin-Protein Ligase Pellino Homolog 2; Pellino-2; Pellino (Drosophila) Homolog 2; Pellino Homolog 2 (Drosophila); Protein Pellino Homolog 2; Pellino Homolog 2

Application Instructions

Application table	Application	Dilution
	FACS	1-3 µg/1x10 ⁶
	ICC/IF	
	IHC-P	2-5 µg/ml
	WB	0.25-0.5 µg/ml
Application Note	The dilutions indicate recommended starting dilutions and the optimal dilutions or concentrations should be determined by the scientist.	

Properties

Form	Liquid
Purification	Affinity purified with Immunogen.
Buffer	0.9% NaCl, 0.2% Na ₂ HPO ₄ , 0.05% Sodium azide and 4% Trehalose.
Preservative	0.05% Sodium azide
Stabilizer	4% Trehalose
Concentration	0.5 mg/ml
Storage instruction	For continuous use, store undiluted antibody at 2-8°C for up to a week. For long-term storage, aliquot and store at -20°C or below. Storage in frost free freezers is not recommended. Avoid repeated freeze/thaw cycles. Suggest spin the vial prior to opening. The antibody solution should be gently mixed

before use.

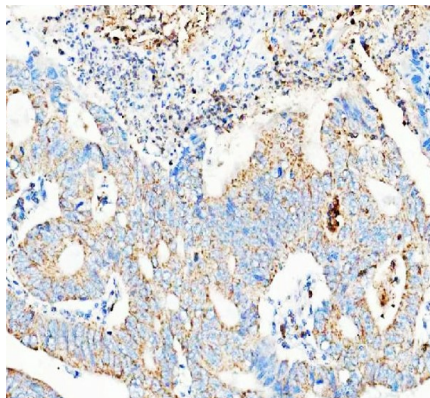
Note

For laboratory research only, not for drug, diagnostic or other use.

Bioinformation

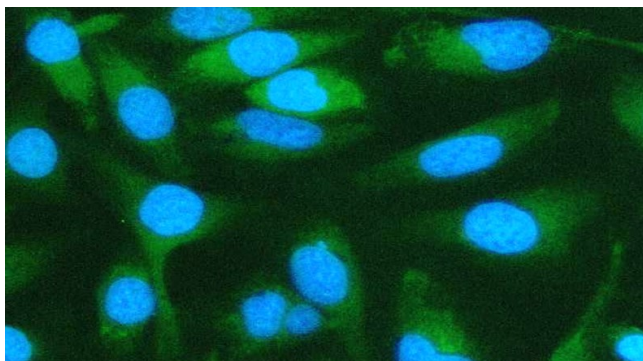
Gene Symbol	PELI2
Gene Full Name	Pellino E3 Ubiquitin Protein Ligase Family Member 2
Background	Predicted to enable protein-macromolecule adaptor activity and ubiquitin protein ligase activity. Acts upstream of or within positive regulation of MAPK cascade and positive regulation of protein phosphorylation. Predicted to be located in membrane.
Function	E3 ubiquitin ligase catalyzing the covalent attachment of ubiquitin moieties onto substrate proteins. Involved in the TLR and IL-1 signaling pathways via interaction with the complex containing IRAK kinases and TRAF6. Mediates IL1B-induced IRAK1 'Lys-63'-linked polyubiquitination and possibly 'Lys-48'-linked ubiquitination. May be important for LPS- and IL1B-induced MAP3K7-dependent, but not MAP3K3-dependent, NF-kappa-B activation. Can activate the MAP (mitogen activated protein) kinase pathway leading to activation of ELK1.
Calculated Mw	46 kDa
PTM	Phosphoprotein

Images



ARG44451 anti-PELI2 / Pellino2 antibody IHC-P image

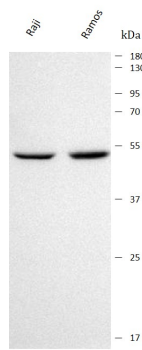
Immunohistochemistry: Human colorectal adenocarcinoma stained with ARG44451 anti-PELI2 / Pellino2 antibody at 2 µg/mL dilution.



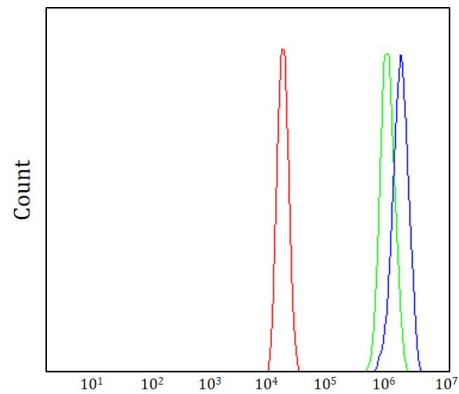
ARG44451 anti-PELI2 / Pellino2 antibody ICC/IF image

Immunofluorescence: HeLa stained with ARG44451 anti-PELI2 / Pellino2 antibody at 5 µg/mL dilution.

ARG44451 anti-PELI2 / Pellino2 antibody WB image



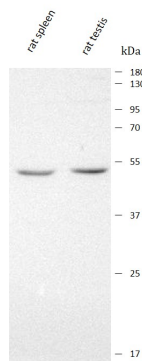
Western blot: Raji and Ramos stained with ARG44451 anti-PELI2 / Pellino2 antibody at 0.5 µg/mL dilution.



ARG44451 anti-PELI2 / Pellino2 antibody FACS image

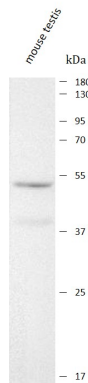
Flow Cytometry: THP-1 stained with ARG44451 anti-PELI2 / Pellino2 antibody at 1 µg/10⁶ cells dilution.

ARG44451 anti-PELI2 / Pellino2 antibody WB image



Western blot: Rat spleen and Rat testis stained with ARG44451 anti-PELI2 / Pellino2 antibody at 0.5 µg/mL dilution.

ARG44451 anti-PELI2 / Pellino2 antibody WB image



Western blot: Mouse testis stained with ARG44451 anti-PELI2 / Pellino2 antibody at 0.5 µg/mL dilution.