

ARG44452 anti-PELI3 antibody

Package: 50 µg
Store at: -20°C

Summary

Product Description	Rabbit Polyclonal antibody recognizes PELI3
Tested Reactivity	Hu, Ms, Rat
Tested Application	FACS, ICC/IF, IHC-P, WB
Host	Rabbit
Clonality	Polyclonal
Isotype	IgG
Target Name	PELI3
Species	Human
Immunogen	Human PELI3 recombinant protein
Conjugation	Un-conjugated
Alternate Names	PELI3; Pellino E3 Ubiquitin Protein Ligase Family Member 3; E3 Ubiquitin-Protein Ligase Pellino Homolog 3; MGC35521; RING-Type E3 Ubiquitin Transferase Pellino Homolog 3; Pellino Homolog 3 (Drosophila); Protein Pellino Homolog 3; Pellino Homolog 3

Application Instructions

Application table	Application	Dilution
	FACS	1-3 µg/1x10 ⁶
	ICC/IF	5 µg/ml
	IHC-P	2-5 µg/ml
	WB	0.25-0.5 µg/ml
Application Note	The dilutions indicate recommended starting dilutions and the optimal dilutions or concentrations should be determined by the scientist.	

Properties

Form	Liquid
Purification	Affinity purified with Immunogen.
Buffer	0.9% NaCl, 0.2% Na ₂ HPO ₄ , 0.05% Sodium azide and 4% Trehalose.
Preservative	0.05% Sodium azide
Stabilizer	4% Trehalose
Concentration	0.5 mg/ml
Storage instruction	For continuous use, store undiluted antibody at 2-8°C for up to a week. For long-term storage, aliquot and store at -20°C or below. Storage in frost free freezers is not recommended. Avoid repeated freeze/thaw cycles. Suggest spin the vial prior to opening. The antibody solution should be gently mixed

before use.

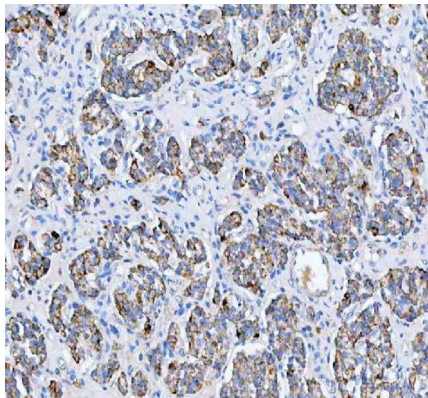
Note

For laboratory research only, not for drug, diagnostic or other use.

Bioinformation

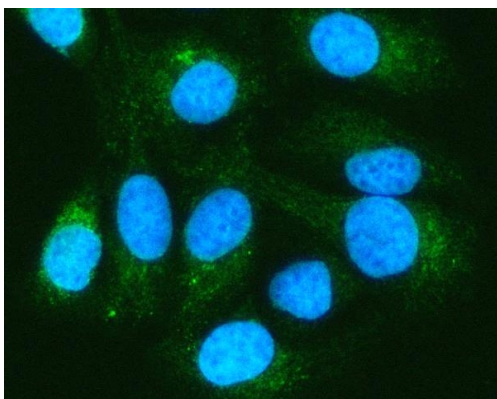
Gene Symbol	PELI3
Gene Full Name	Pellino E3 Ubiquitin Protein Ligase Family Member 3
Background	The protein encoded by this gene is a scaffold protein and an intermediate signaling protein in the innate immune response pathway. The encoded protein helps transmit the immune response signal from Toll-like receptors to IRAK1/TRAF6 complexes. Several transcript variants encoding different isoforms have been found for this gene.
Function	E3 ubiquitin ligase catalyzing the covalent attachment of ubiquitin moieties onto substrate proteins.
Calculated Mw	51 kDa
PTM	Phosphoprotein

Images



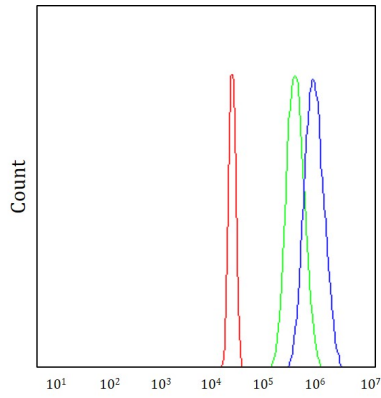
ARG44452 anti-PELI3 antibody IHC-P image

Immunohistochemistry: Human lung adenocarcinoma stained with ARG44452 anti-PELI3 antibody at 2 µg/mL dilution.



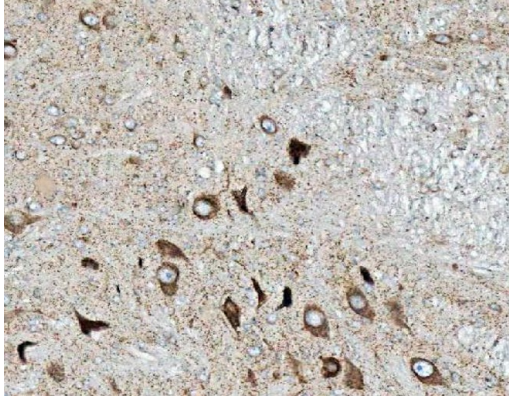
ARG44452 anti-PELI3 antibody ICC/IF image

Immunofluorescence: HeLa stained with ARG44452 anti-PELI3 antibody at 5 µg/mL dilution.



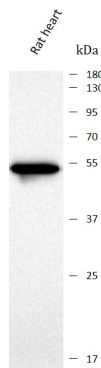
ARG44452 anti-PELI3 antibody FACS image

Flow Cytometry: HeLa stained with ARG44452 anti-PELI3 antibody at $1\text{ }\mu\text{g}/10^6$ cells dilution.



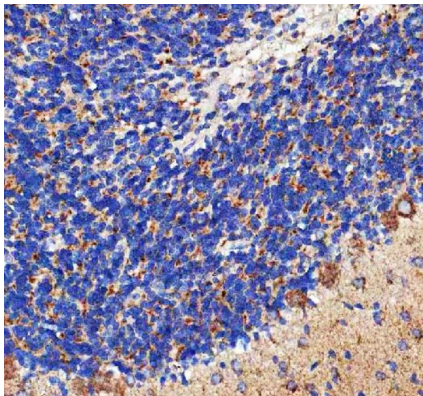
ARG44452 anti-PELI3 antibody IHC-P image

Immunohistochemistry: Rat cerebellum stained with ARG44452 anti-PELI3 antibody at $2\text{ }\mu\text{g}/\text{mL}$ dilution.



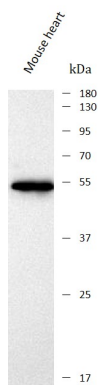
ARG44452 anti-PELI3 antibody WB image

Western blot: Rat heart stained with ARG44452 anti-PELI3 antibody at $0.5\text{ }\mu\text{g}/\text{mL}$ dilution.



ARG44452 anti-PELI3 antibody IHC-P image

Immunohistochemistry: Mouse cerebellum stained with ARG44452 anti-PELI3 antibody at $2\text{ }\mu\text{g}/\text{mL}$ dilution.



ARG44452 anti-PELI3 antibody WB image

Western blot: Mouse heart stained with ARG44452 anti-PELI3 antibody at 0.5 $\mu\text{g}/\text{mL}$ dilution.