

## ARG44454 anti-INO80B antibody

Package: 50 µg  
Store at: -20°C

### Summary

Product Description	Rabbit Polyclonal antibody recognizes INO80B
Tested Reactivity	Hu
Tested Application	FACS, WB
Host	Rabbit
Clonality	Polyclonal
Isotype	IgG
Target Name	INO80B
Species	Human
Immunogen	Human INO80B recombinant protein
Conjugation	Un-conjugated
Alternate Names	INO80B; INO80 Complex Subunit B; PAPA-1; Hles2; High Mobility Group AT-Hook 1-Like 4; HMGIYL4; PAP-1BP; HMGA1L4; ZNHIT4; IES2; Zinc Finger HIT Domain-Containing Protein 4; PAP-1-Associated Protein 1; Zinc Finger, HIT Type 4; PAP-1 Binding Protein; IES2 Homolog; PAPA1; PAP (Pim-1 Associated Protein) Associated Protein 1; IES2 Homolog (S. Cerevisiae)

### Application Instructions

Application table	Application	Dilution
	FACS	1-3 µg/1x10 <sup>6</sup>
	WB	0.25-0.5 µg/ml
Application Note	The dilutions indicate recommended starting dilutions and the optimal dilutions or concentrations should be determined by the scientist.	

### Properties

Form	Liquid
Purification	Affinity purified with Immunogen.
Buffer	0.9% NaCl, 0.2% Na <sub>2</sub> HPO <sub>4</sub> , 0.05% Sodium azide and 4% Trehalose.
Preservative	0.05% Sodium azide
Stabilizer	4% Trehalose
Concentration	0.5 mg/ml
Storage instruction	For continuous use, store undiluted antibody at 2-8°C for up to a week. For long-term storage, aliquot and store at -20°C or below. Storage in frost free freezers is not recommended. Avoid repeated freeze/thaw cycles. Suggest spin the vial prior to opening. The antibody solution should be gently mixed before use.

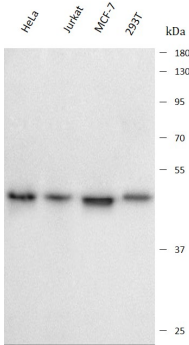
Bioinformation

Gene Symbol	INO80B
Gene Full Name	INO80 Complex Subunit B
Background	This gene encodes a subunit of an ATP-dependent chromatin remodeling complex, INO80, which plays a role in DNA and nucleosome-activated ATPase activity and ATP-dependent nucleosome sliding. Readthrough transcription of this gene into the neighboring downstream gene, which encodes WW domain-binding protein 1, generates a non-coding transcript.
Function	Induces growth and cell cycle arrests at the G1 phase of the cell cycle.
Calculated Mw	39 kDa
PTM	Phosphoprotein
Cellular Localization	Nucleus

Images

ARG44454 anti-INO80B antibody WB image

Western blot: HeLa, Jurkat, MCF-7 and 293T stained with ARG44454 anti-INO80B antibody at 0.5 µg/mL dilution.



ARG44454 anti-INO80B antibody FACS image

Flow Cytometry: 293T stained with ARG44454 anti-INO80B antibody at 1 µg/10^6 cells dilution.

