

ARG44465 anti-PGLS antibody

Package: 50 µg
Store at: -20°C

Summary

Product Description	Rabbit Polyclonal antibody recognizes PGLS
Tested Reactivity	Hu, Ms, Rat
Tested Application	FACS, ICC/IF, WB
Host	Rabbit
Clonality	Polyclonal
Isotype	IgG
Target Name	PGLS
Species	Human
Immunogen	Human PGLS recombinant protein
Conjugation	Un-conjugated
Alternate Names	PGLS; 6-Phosphogluconolactonase; 6PGL; EC 3.1.1.31; Epididymis Secretory Sperm Binding Protein; Epididymis Secretory Protein Li 304; HEL-S-304

Application Instructions

Application table	Application	Dilution
	FACS	1-3 µg/1x10 ⁶
	ICC/IF	5 µg/ml
	WB	0.25-0.5 µg/ml
Application Note	The dilutions indicate recommended starting dilutions and the optimal dilutions or concentrations should be determined by the scientist.	

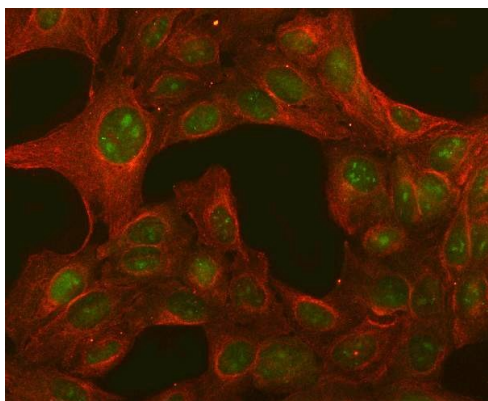
Properties

Form	Liquid
Purification	Affinity purified with Immunogen.
Buffer	0.9% NaCl, 0.2% Na ₂ HPO ₄ , 0.05% Sodium azide and 4% Trehalose.
Preservative	0.05% Sodium azide
Stabilizer	4% Trehalose
Concentration	0.5 mg/ml
Storage instruction	For continuous use, store undiluted antibody at 2-8°C for up to a week. For long-term storage, aliquot and store at -20°C or below. Storage in frost free freezers is not recommended. Avoid repeated freeze/thaw cycles. Suggest spin the vial prior to opening. The antibody solution should be gently mixed before use.

Bioinformation

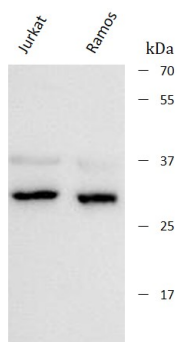
Gene Symbol	PGLS
Gene Full Name	6-Phosphogluconolactonase
Background	Enables 6-phosphogluconolactonase activity. Involved in pentose-phosphate shunt. Located in extracellular exosome.
Function	Hydrolysis of 6-phosphogluconolactone to 6-phosphogluconate.
Calculated Mw	28 kDa
PTM	Acetylation, Phosphoprotein
Cellular Localization	Cytoplasm

Images



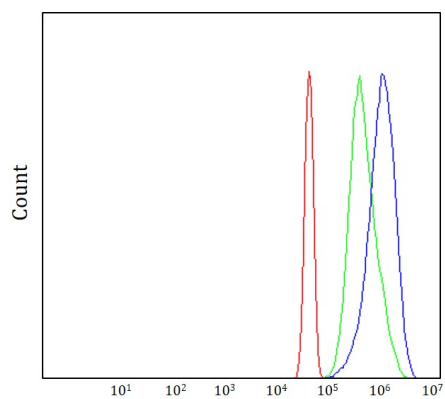
ARG44465 anti-PGLS antibody ICC/IF image

Immunofluorescence: U2OS stained with ARG44465 anti-PGLS antibody at 5 µg/mL dilution.



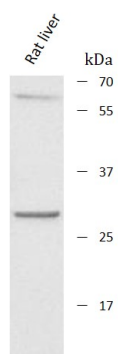
ARG44465 anti-PGLS antibody WB image

Western blot: Jurkat and Ramos stained with ARG44465 anti-PGLS antibody at 0.5 µg/mL dilution.



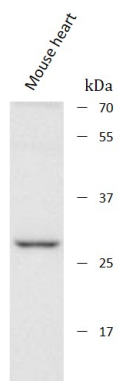
ARG44465 anti-PGLS antibody FACS image

Flow Cytometry: JK stained with ARG44465 anti-PGLS antibody at $1 \mu\text{g}/10^6$ cells dilution.



ARG44465 anti-PGLS antibody WB image

Western blot: Rat liver stained with ARG44465 anti-PGLS antibody at $0.5 \mu\text{g}/\text{mL}$ dilution.



ARG44465 anti-PGLS antibody WB image

Western blot: Mouse heart stained with ARG44465 anti-PGLS antibody at $0.5 \mu\text{g}/\text{mL}$ dilution.