

## ARG44481 anti-ASUN / INTS13 antibody

Package: 50 µg  
Store at: -20°C

### Summary

Product Description	Rabbit Polyclonal antibody recognizes ASUN / INTS13
Tested Reactivity	Hu
Tested Application	ICC/IF, WB
Host	Rabbit
Clonality	Polyclonal
Isotype	IgG
Target Name	ASUN / INTS13
Species	Human
Immunogen	Human ASUN / INTS13 recombinant protein
Conjugation	Un-conjugated
Alternate Names	INTS13; Integrator Complex Subunit 13; C12orf11; Mat89Bb; SPATA30; NET48; ASUN; Asunder, Spermatogenesis Regulator Homolog (Drosophila); Cell Cycle Regulator Mat89Bb Homolog; Spermatogenesis Associated 30; Sarcoma Antigen NY-SAR-95; Protein Asunder Homolog; Germ Cell Tumor 1

### Application Instructions

Application table	Application	Dilution
	ICC/IF	5 µg/ml
	WB	0.25-0.5 µg/ml
Application Note	The dilutions indicate recommended starting dilutions and the optimal dilutions or concentrations should be determined by the scientist.	

### Properties

Form	Liquid
Purification	Affinity purified with Immunogen.
Buffer	0.9% NaCl, 0.2% Na <sub>2</sub> HPO <sub>4</sub> , 0.05% Sodium azide and 4% Trehalose.
Preservative	0.05% Sodium azide
Stabilizer	4% Trehalose
Concentration	0.5 mg/ml
Storage instruction	For continuous use, store undiluted antibody at 2-8°C for up to a week. For long-term storage, aliquot and store at -20°C or below. Storage in frost free freezers is not recommended. Avoid repeated freeze/thaw cycles. Suggest spin the vial prior to opening. The antibody solution should be gently mixed before use.

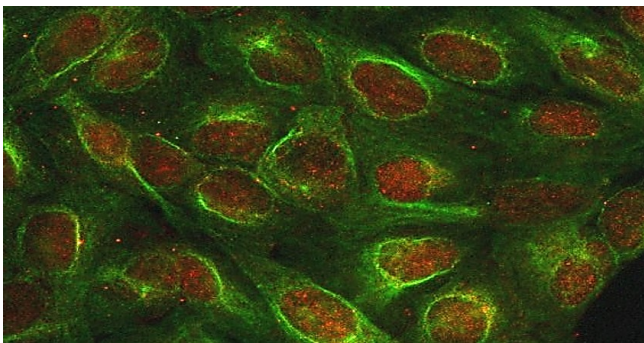
Note

For laboratory research only, not for drug, diagnostic or other use.

Bioinformation

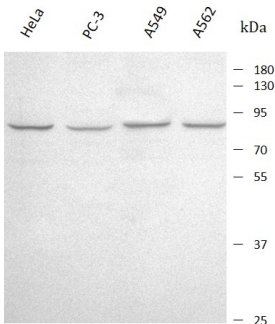
Gene Symbol	INTS13
Gene Full Name	Integrator Complex Subunit 13
Background	Involved in regulation of mitotic cell cycle. Acts upstream of or within centrosome localization; mitotic spindle organization; and protein localization to nuclear envelope. Located in cytoplasm and nuclear body.
Function	Crucial regulator of the mitotic cell cycle and development. At prophase, required for dynein anchoring to the nuclear envelope important for proper centrosome-nucleus coupling. At G2/M phase, may be required for proper spindle formation and execution of cytokinesis. Probable component of the Integrator (INT) complex, a complex involved in the small nuclear RNAs (snRNA) U1 and U2 transcription and in their 3'-box-dependent processing.
Calculated Mw	80 kDa
PTM	Isopeptide bond, Phosphoprotein, Ubl conjugation
Cellular Localization	Cytoplasm, Nucleus

Images



ARG44481 anti-ASUN / INTS13 antibody ICC/IF image

Immunofluorescence: U2OS stained with ARG44481 anti-ASUN / INTS13 antibody at 5 µg/mL dilution.



ARG44481 anti-ASUN / INTS13 antibody WB image

Western blot: HeLa, PC-3, A549 and A562 stained with ARG44481 anti-ASUN / INTS13 antibody at 0.5 µg/mL dilution.