

## ARG44500 anti-HDHD5 antibody

Package: 50 µg  
Store at: -20°C

### Summary

Product Description	Rabbit Polyclonal antibody recognizes HDHD5
Tested Reactivity	Hu, Ms, Rat
Tested Application	FACS, IHC-P, WB
Host	Rabbit
Clonality	Polyclonal
Isotype	IgG
Target Name	HDHD5
Species	Human
Immunogen	Human HDHD5 recombinant protein
Conjugation	Un-conjugated
Alternate Names	HDHD5; Haloacid Dehalogenase Like Hydrolase Domain Containing 5; CECR5; Haloacid Dehalogenase-Like Hydrolase Domain-Containing 5; Cat Eye Syndrome Chromosome Region, Candidate 5; Cat Eye Syndrome Critical Region Protein 5

### Application Instructions

Application table	Application	Dilution
	FACS	1-3 µg/10 <sup>6</sup> cells
	IHC-P	2-5 µg/ml
	WB	0.25-0.5 µg/ml
Application Note	The dilutions indicate recommended starting dilutions and the optimal dilutions or concentrations should be determined by the scientist.	

### Properties

Form	Liquid
Purification	Affinity purified with Immunogen.
Buffer	0.9% NaCl, 0.2% Na <sub>2</sub> HPO <sub>4</sub> , 0.05% Sodium azide and 4% Trehalose.
Preservative	0.05% Sodium azide
Stabilizer	4% Trehalose
Concentration	0.5 mg/ml
Storage instruction	For continuous use, store undiluted antibody at 2-8°C for up to a week. For long-term storage, aliquot and store at -20°C or below. Storage in frost free freezers is not recommended. Avoid repeated freeze/thaw cycles. Suggest spin the vial prior to opening. The antibody solution should be gently mixed before use.

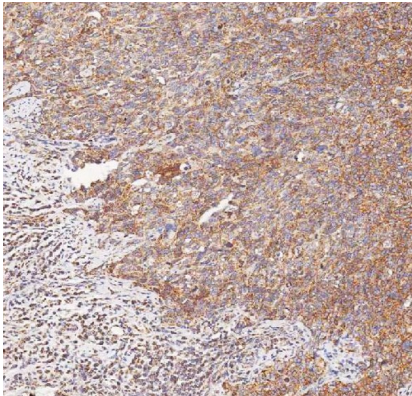
Note

For laboratory research only, not for drug, diagnostic or other use.

Bioinformation

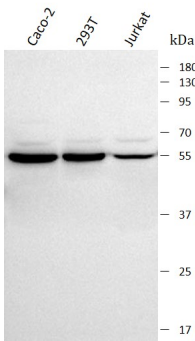
Gene Symbol	HDHD5
Gene Full Name	Haloacid Dehalogenase Like Hydrolase Domain Containing 5
Background	Predicted to be involved in glycerophospholipid biosynthetic process. Predicted to be active in mitochondrion.
Function	Candidate gene for the Cat Eye Syndrome (CES), a developmental disorder associated with the duplication of a 2 Mb region of 22q11.2. Duplication usually takes in the form of a surpernumerary bisatellited isodicentric chromosome, resulting in four copies of the region (represents an inv dup22(q11)). CES is characterized clinically by the combination of coloboma of the iris and anal atresia with fistula, downslanting palpebral fissures, preauricular tags and/or pits, frequent occurrence of heart and renal malformations, and normal or near-normal mental development.
Calculated Mw	46 kDa

Images



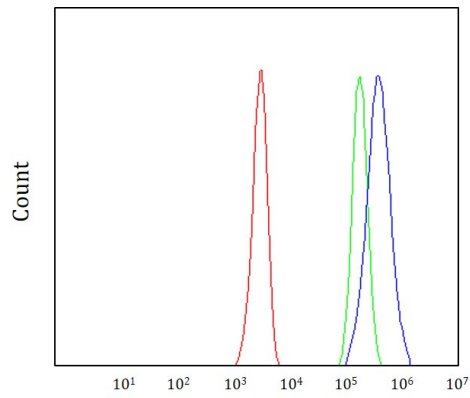
ARG44500 anti-HDHD5 antibody IHC-P image

Immunohistochemistry: Human cervix squamous cell carcinoma stained with ARG44500 anti-HDHD5 antibody at 2 µg/mL dilution.



ARG44500 anti-HDHD5 antibody WB image

Western blot: Caco-2, 293T and Jurkat stained with ARG44500 anti-HDHD5 antibody at 0.5 µg/mL dilution.



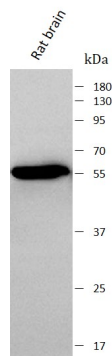
#### ARG44500 anti-HDHD5 antibody FACS image

Flow Cytometry: JK stained with ARG44500 anti-HDHD5 antibody at  $1\text{ }\mu\text{g}/10^6$  cells dilution.



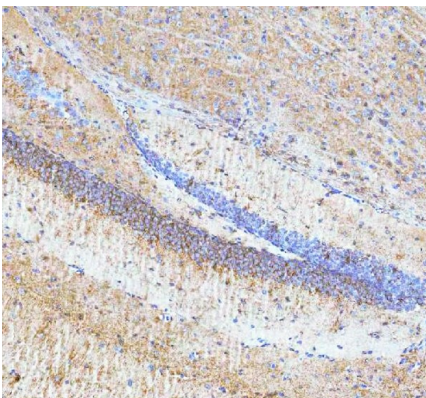
#### ARG44500 anti-HDHD5 antibody IHC-P image

Immunohistochemistry: Rat brain stained with ARG44500 anti-HDHD5 antibody at  $2\text{ }\mu\text{g}/\text{mL}$  dilution.



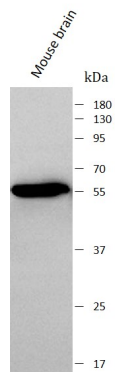
#### ARG44500 anti-HDHD5 antibody WB image

Western blot: Rat brain stained with ARG44500 anti-HDHD5 antibody at  $0.5\text{ }\mu\text{g}/\text{mL}$  dilution.



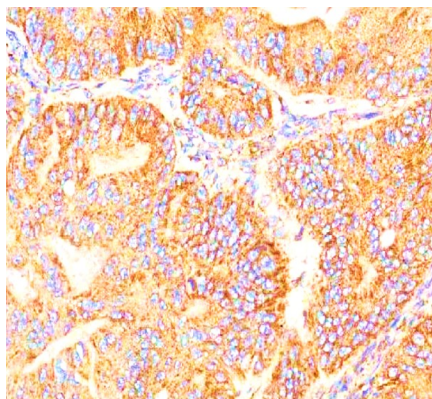
#### ARG44500 anti-HDHD5 antibody IHC-P image

Immunohistochemistry: Mouse brain stained with ARG44500 anti-HDHD5 antibody at  $2\text{ }\mu\text{g}/\text{mL}$  dilution.



#### ARG44500 anti-HDHD5 antibody WB image

Western blot: Mouse brain stained with ARG44500 anti-HDHD5 antibody at 0.5  $\mu\text{g}/\text{mL}$  dilution.



#### ARG44500 anti-HDHD5 antibody IHC-P image

Immunohistochemistry: Human ovarian tumor stained with ARG44500 anti-HDHD5 antibody at 2  $\mu\text{g}/\text{mL}$  dilution.