

## ARG44527 anti-SLC6A20 antibody

Package: 50 µg  
Store at: -20°C

### Summary

Product Description	Rabbit Polyclonal antibody recognizes SLC6A20
Tested Reactivity	Hu, Ms, Rat
Tested Application	FACS, IHC-P, WB
Host	Rabbit
Clonality	Polyclonal
Isotype	IgG
Target Name	SLC6A20
Species	Human
Immunogen	Human SLC6A20 recombinant protein
Conjugation	Un-conjugated
Alternate Names	SLC6A20; Solute Carrier Family 6 Member 20; SIT1; XT3; Xtrp3; IMINO; Solute Carrier Family 6 (Proline IMINO Transporter), Member 20; Sodium- And Chloride-Dependent Transporter XTRP3; Sodium-Dependent Imino Acid Transporter 1; Sodium/Imino-Acid Transporter 1; Transporter RB21A Homolog; Solute Carrier Family 6 (Neurotransmitter Transporter), Member 20; Neurotransmitter Transporter RB21A; X Transporter Protein 3; Orphan Transporter XT3; XTRP3

### Application Instructions

Application table	Application	Dilution
	FACS	1-3 µg/1x10 <sup>6</sup>
	IHC-P	2-5 µg/ml
	WB	0.25-0.5 µg/ml

**Application Note** The dilutions indicate recommended starting dilutions and the optimal dilutions or concentrations should be determined by the scientist.

### Properties

Form	Liquid
Purification	Affinity purified with Immunogen.
Buffer	0.9% NaCl, 0.2% Na <sub>2</sub> HPO <sub>4</sub> , 0.05% Sodium azide and 4% Trehalose.
Preservative	0.05% Sodium azide
Stabilizer	4% Trehalose
Concentration	0.5 mg/ml
Storage instruction	For continuous use, store undiluted antibody at 2-8°C for up to a week. For long-term storage, aliquot and store at -20°C or below. Storage in frost free freezers is not recommended. Avoid repeated

freeze/thaw cycles. Suggest spin the vial prior to opening. The antibody solution should be gently mixed before use.

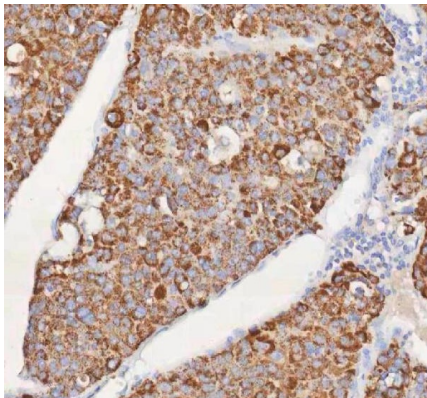
**Note** For laboratory research only, not for drug, diagnostic or other use.

## Bioinformation

---

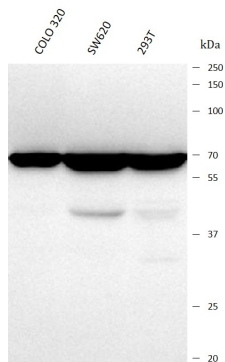
Gene Symbol	SLC6A20
Gene Full Name	Solute Carrier Family 6 Member 20
Background	Transport of small hydrophilic substances across cell membranes is mediated by substrate-specific transporter proteins which have been classified into several families of related genes. The protein encoded by this gene belongs to the sodium:neurotransmitter symporter (SNF) family and functions as a proline transporter expressed in kidney and small intestine. Mutations in this gene are associated with Hyperglycinuria and Iminoglycinuria.
Function	Mediates the Na <sup>+</sup> - and Cl <sup>-</sup> -dependent uptake of imino acids such as L-proline, N-methyl-L-proline and pipercolate as well as N-methylated amino acids.
Calculated Mw	66 kDa
PTM	Glycoprotein
Cellular Localization	Cell membrane, Membrane

## Images



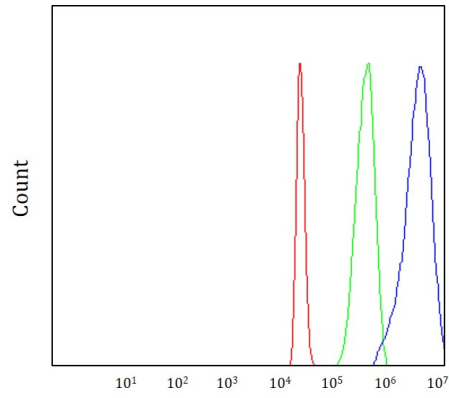
ARG44527 anti-SLC6A20 antibody IHC-P image

Immunohistochemistry: Human liver cancer stained with ARG44527 anti-SLC6A20 antibody at 2 µg/mL dilution.



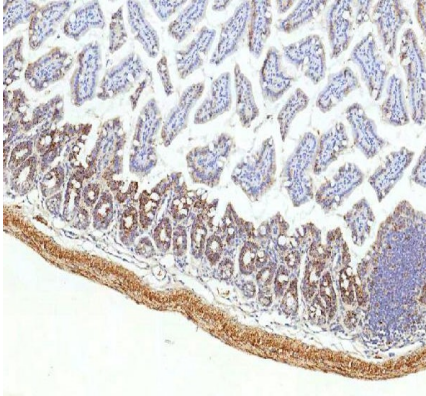
ARG44527 anti-SLC6A20 antibody WB image

Western blot: COLO 320, SW620 and 293T stained with ARG44527 anti-SLC6A20 antibody at 0.5 µg/mL dilution.



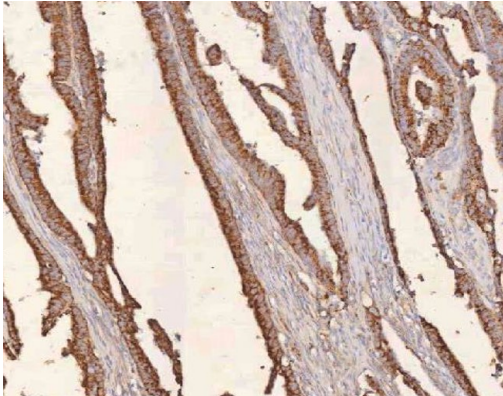
#### ARG44527 anti-SLC6A20 antibody FACS image

Flow Cytometry: 293T stained with ARG44527 anti-SLC6A20 antibody at  $1 \mu\text{g}/10^6$  cells dilution.



#### ARG44527 anti-SLC6A20 antibody IHC-P image

Immunohistochemistry: Mouse colon stained with ARG44527 anti-SLC6A20 antibody at  $2 \mu\text{g}/\text{mL}$  dilution.



#### ARG44527 anti-SLC6A20 antibody IHC-P image

Immunohistochemistry: Human rectum adenocarcinoma stained with ARG44527 anti-SLC6A20 antibody at  $2 \mu\text{g}/\text{mL}$  dilution.