

## ARG44543 anti-SERPINB8 antibody

Package: 100 µl  
Store at: -20°C

### Summary

Product Description	Rabbit Polyclonal antibody recognizes SERPINB8
Tested Reactivity	Hu
Tested Application	IHC-P, WB
Host	Rabbit
Clonality	Polyclonal
Isotype	IgG
Target Name	SERPINB8
Species	Human
Immunogen	Full length fusion protein
Conjugation	Un-conjugated
Alternate Names	SERPINB8; Serpin Family B Member 8; CAP2; Cytoplasmic Antiproteinase 2; PI8; Serine (Or Cysteine) Proteinase Inhibitor, Clade B (Ovalbumin), Member 8; Serpin Peptidase Inhibitor, Clade B (Ovalbumin), Member 8; Peptidase Inhibitor 8; Serpin B8; PI-8; Protease Inhibitor 8 (Ovalbumin Type); C18orf53; CAP-2; PSS5

### Application Instructions

Application table	Application	Dilution
	IHC-P	1:50-1:100
	WB	1:500-1:1000
Application Note	* The dilutions indicate recommended starting dilutions and the optimal dilutions or concentrations should be determined by the scientist.	

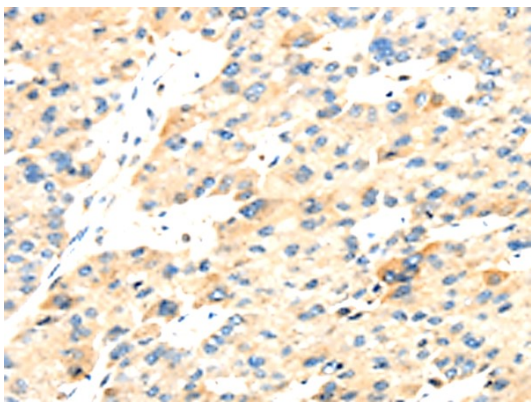
### Properties

Form	Liquid
Purification	Affinity purified.
Buffer	PBS (pH 7.4), 0.05% Sodium azide and 40% Glycerol.
Preservative	0.05% Sodium azide
Stabilizer	40% Glycerol
Storage instruction	For continuous use, store undiluted antibody at 2-8°C for up to a week. For long-term storage, aliquot and store at -20°C. Storage in frost free freezers is not recommended. Avoid repeated freeze/thaw cycles. Suggest spin the vial prior to opening. The antibody solution should be gently mixed before use.
Note	For laboratory research only, not for drug, diagnostic or other use.

Bioinformation

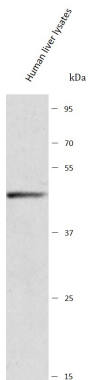
Gene Symbol	SERPINB8
Gene Full Name	Serpin Family B Member 8
Background	The protein encoded by this gene is a member of the ov-serpin family of serine protease inhibitors. The encoded protein is produced by platelets and can bind to and inhibit the function of furin, a serine protease involved in platelet functions. In addition, this protein has been found to enhance the mechanical stability of cell-cell adhesion in the skin, and defects in this gene have been associated with an autosomal-recessive form of exfoliative ichthyosis.
Function	Has an important role in epithelial desmosome-mediated cell-cell adhesion.
Calculated Mw	43 kDa
Cellular Localization	Cytoplasm

Images



ARG44543 anti-SERPINB8 antibody IHC-P image

Immunohistochemistry: Human liver cancer stained with ARG44543 anti-SERPINB8 antibody



ARG44543 anti-SERPINB8 antibody WB image

Western blot: Human liver lysates stained with ARG44543 anti-SERPINB8 antibody.