

ARG44545 anti-PAM16 antibody

Package: 100 µl
Store at: -20°C

Summary

Product Description	Rabbit Polyclonal antibody recognizes PAM16
Tested Reactivity	Hu, Ms
Tested Application	IHC-P, WB
Host	Rabbit
Clonality	Polyclonal
Isotype	IgG
Target Name	PAM16
Species	Human
Immunogen	Human PAM16 fusion protein
Conjugation	Un-conjugated
Alternate Names	PAM16; Presequence Translocase Associated Motor 16; TIMM16; Magmas; Tim16; Mitochondria Associated Protein Involved In Granulocyte Macrophage Colony Stimulating Factor Signal Transduction; Mitochondria-Associated Granulocyte Macrophage CSF-Signaling Molecule; Mitochondrial Import Inner Membrane Translocase Subunit TIM16; Presequence Translocase Associated Motor 16 Homolog; Presequence Translocase-Associated Motor 16 Homolog (S. Cerevisiae); Presequence Translocated-Associated Motor Subunit PAM16; Magmas-Like Protein; CGI-136; SMDMDM; MAGMAS; TIM16

Application Instructions

Application table	Application	Dilution
	IHC-P	1:100 - 1:300
	WB	1:500 - 1:2000
Application Note	* The dilutions indicate recommended starting dilutions and the optimal dilutions or concentrations should be determined by the scientist.	
Observed Size	14 kDa	

Properties

Form	Liquid
Purification	Affinity Purified
Buffer	PBS (pH 7.4), 0.05% Sodium azide and 40% Glycerol.
Preservative	0.05% Sodium azide
Stabilizer	40% Glycerol
Storage instruction	For continuous use, store undiluted antibody at 2-8°C for up to a week. For long-term storage, aliquot and store at -20°C or below. Storage in frost free freezers is not recommended. Avoid repeated freeze/thaw cycles. Suggest spin the vial prior to opening. The antibody solution should be gently mixed

before use.

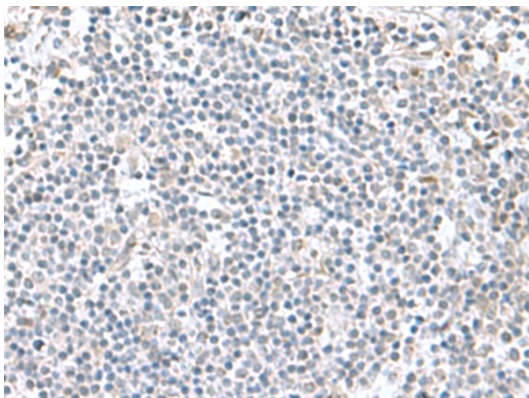
Note

For laboratory research only, not for drug, diagnostic or other use.

Bioinformation

Gene Symbol	PAM16
Gene Full Name	Presequence Translocase Associated Motor 16
Background	This gene encodes a mitochondrial protein involved in granulocyte-macrophage colony-stimulating factor (GM-CSF) signaling. This protein also plays a role in the import of nuclear-encoded mitochondrial proteins into the mitochondrial matrix and may be important in reactive oxygen species (ROS) homeostasis. Mutations in this gene cause Megarbane-Dagher-Melike type spondylometaphyseal dysplasia, an early lethal skeletal dysplasia characterized by short stature, developmental delay and other skeletal abnormalities.
Function	Regulates ATP-dependent protein translocation into the mitochondrial matrix. Inhibits DNAJC19 stimulation of HSPA9/Mortalin ATPase activity.
Calculated Mw	14 kDa
PTM	Phosphoprotein
Cellular Localization	Membrane, Mitochondrion, Mitochondrion inner membrane

Images



ARG44545 anti-PAM16 antibody IHC-P image

Immunohistochemistry: Human tonsil stained with ARG44545 anti-PAM16 antibody.



ARG44545 anti-PAM16 antibody WB image

Western blot: HL-60, HeLa, Jurkat and LNCAP stained with ARG44545 anti-PAM16 antibody.