

## ARG44587 anti-SOX2 antibody

Package: 20 µl  
Store at: -20°C

### Summary

|                     |                                                                                                                                                                                                                         |
|---------------------|-------------------------------------------------------------------------------------------------------------------------------------------------------------------------------------------------------------------------|
| Product Description | Rabbit Monoclonal antibody recognizes SOX2                                                                                                                                                                              |
| Tested Reactivity   | Hu, Ms                                                                                                                                                                                                                  |
| Tested Application  | ICC/IF, IHC-P, WB                                                                                                                                                                                                       |
| Host                | Rabbit                                                                                                                                                                                                                  |
| Clonality           | Monoclonal                                                                                                                                                                                                              |
| Isotype             | IgG                                                                                                                                                                                                                     |
| Target Name         | SOX2                                                                                                                                                                                                                    |
| Species             | Human                                                                                                                                                                                                                   |
| Immunogen           | Synthetic peptide corresponding to internal region of human SOX2.                                                                                                                                                       |
| Conjugation         | Un-conjugated                                                                                                                                                                                                           |
| Alternate Names     | SOX2; SRY-Box Transcription Factor 2; SRY (Sex Determining Region Y)-Box 2; Transcription Factor SOX-2; SRY-Box 2; Sex Determining Region Y-Box 2; SRY-Related HMG-Box Gene 2; Transcription Factor SOX2; MCOPS3; ANOP3 |

### Application Instructions

| Application table | Application                                                                                                                                | Dilution     |
|-------------------|--------------------------------------------------------------------------------------------------------------------------------------------|--------------|
|                   | ICC/IF                                                                                                                                     | 1:50-1:200   |
|                   | IHC-P                                                                                                                                      | 1:50-1:100   |
|                   | WB                                                                                                                                         | 1:500-1:1000 |
| Application Note  | * The dilutions indicate recommended starting dilutions and the optimal dilutions or concentrations should be determined by the scientist. |              |

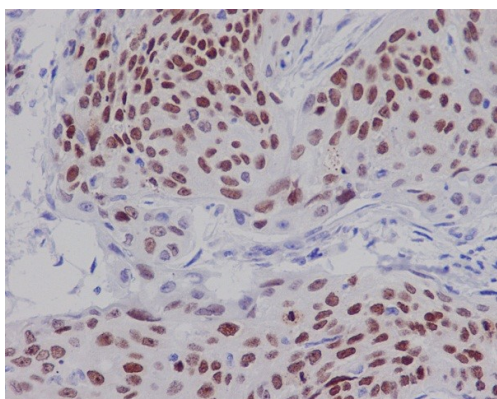
### Properties

|                     |                                                                                                                                                                                                                                                                                                                            |
|---------------------|----------------------------------------------------------------------------------------------------------------------------------------------------------------------------------------------------------------------------------------------------------------------------------------------------------------------------|
| Form                | Liquid                                                                                                                                                                                                                                                                                                                     |
| Purification        | Affinity Purified                                                                                                                                                                                                                                                                                                          |
| Buffer              | PBS (pH 7.4), 150 mM NaCl, 0.02% Sodium azide and 50% Glycerol.                                                                                                                                                                                                                                                            |
| Preservative        | 0.02% Sodium azide                                                                                                                                                                                                                                                                                                         |
| Stabilizer          | 50% Glycerol                                                                                                                                                                                                                                                                                                               |
| Storage instruction | For continuous use, store undiluted antibody at 2-8°C for up to a week. For long-term storage, aliquot and store at -20°C or below. Storage in frost free freezers is not recommended. Avoid repeated freeze/thaw cycles. Suggest spin the vial prior to opening. The antibody solution should be gently mixed before use. |
| Note                | For laboratory research only, not for drug, diagnostic or other use.                                                                                                                                                                                                                                                       |

## Bioinformation

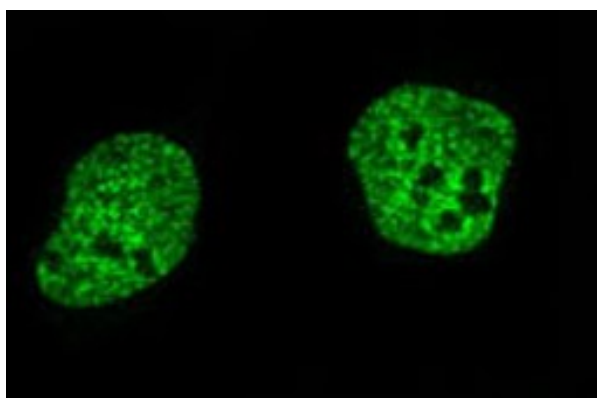
|                       |                                                                                                                                                                                                                                                                                                                                                                                                                                                                                                                                                                                                                                         |
|-----------------------|-----------------------------------------------------------------------------------------------------------------------------------------------------------------------------------------------------------------------------------------------------------------------------------------------------------------------------------------------------------------------------------------------------------------------------------------------------------------------------------------------------------------------------------------------------------------------------------------------------------------------------------------|
| Gene Symbol           | SOX2                                                                                                                                                                                                                                                                                                                                                                                                                                                                                                                                                                                                                                    |
| Gene Full Name        | SRY-Box Transcription Factor 2                                                                                                                                                                                                                                                                                                                                                                                                                                                                                                                                                                                                          |
| Background            | This intronless gene encodes a member of the SRY-related HMG-box (SOX) family of transcription factors involved in the regulation of embryonic development and in the determination of cell fate. The product of this gene is required for stem-cell maintenance in the central nervous system, and also regulates gene expression in the stomach. Mutations in this gene have been associated with optic nerve hypoplasia and with syndromic microphthalmia, a severe form of structural eye malformation. This gene lies within an intron of another gene called SOX2 overlapping transcript (SOX2OT). [provided by RefSeq, Jul 2008] |
| Function              | Critical for early embryogenesis and for embryonic stem cell pluripotency.<br>May function as a switch in neuronal development. [UniProt]                                                                                                                                                                                                                                                                                                                                                                                                                                                                                               |
| Calculated Mw         | 34 kDa                                                                                                                                                                                                                                                                                                                                                                                                                                                                                                                                                                                                                                  |
| Cellular Localization | Cytoplasm, Nucleus. [UniProt]                                                                                                                                                                                                                                                                                                                                                                                                                                                                                                                                                                                                           |

## Images



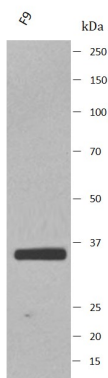
ARG44587 anti-SOX2 antibody IHC-P image

Immunohistochemistry: Human cervix carcinoma stained with ARG44587 anti-SOX2 antibody.



ARG44587 anti-SOX2 antibody ICC/IF image

Immunofluorescence: NCCIT stained with ARG44587 anti-SOX2 antibody.



#### ARG44587 anti-SOX2 antibody WB image

Western blot: F9 stained with ARG44587 anti-SOX2 antibody.