

ARG44735 anti-S100P antibody

Package: 50 µg
Store at: -20°C

Summary

Product Description	Mouse Monoclonal antibody recognizes S100P
Tested Reactivity	Hu
Tested Application	IHC-P, IP
Host	Mouse
Clonality	Monoclonal
Isotype	IgG2a
Target Name	S100P
Species	Human
Conjugation	Un-conjugated
Alternate Names	S100 calcium-binding protein P; MIG9; Protein S100-P; Migration-inducing gene 9 protein; Protein S100-E

Application Instructions

Application table	Application	Dilution
	IHC-P	
	IP	10 µg/mL
Application Note	* The dilutions indicate recommended starting dilutions and the optimal dilutions or concentrations should be determined by the scientist.	

Properties

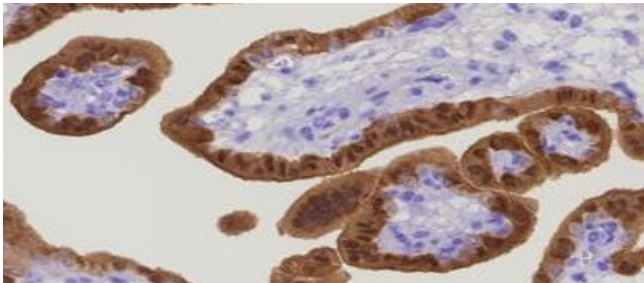
Form	Liquid
Purification	Protein A purification
Buffer	PBS with 0.09% sodium azide
Storage instruction	For continuous use, store undiluted antibody at 2-8°C for up to a week. For long-term storage, aliquot and store at -20°C or below. Storage in frost free freezers is not recommended. Avoid repeated freeze/thaw cycles. Suggest spin the vial prior to opening. The antibody solution should be gently mixed before use.
Note	For laboratory research only, not for drug, diagnostic or other use.

Bioinformation

Gene Symbol	S100P
Gene Full Name	S100 calcium binding protein P

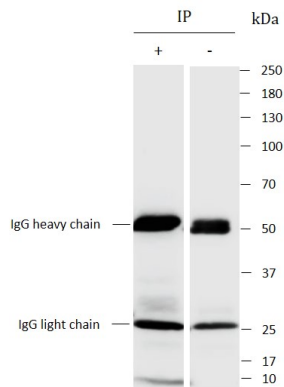
Background	The protein encoded by this gene is a member of the S100 family of proteins containing 2 EF-hand calcium-binding motifs. S100 proteins are localized in the cytoplasm and/or nucleus of a wide range of cells, and involved in the regulation of a number of cellular processes such as cell cycle progression and differentiation. S100 genes include at least 13 members which are located as a cluster on chromosome 1q21; however, this gene is located at 4p16. This protein, in addition to binding Ca ²⁺ , also binds Zn ²⁺ and Mg ²⁺ . This protein may play a role in the etiology of prostate cancer. [provided by RefSeq, Jul 2008]
Function	May function as calcium sensor and contribute to cellular calcium signaling. In a calcium-dependent manner, functions by interacting with other proteins, such as EZR and PPP5C, and indirectly plays a role in physiological processes like the formation of microvilli in epithelial cells. May stimulate cell proliferation in an autocrine manner via activation of the receptor for activated glycation end products (RAGE). [UniProt]
Calculated Mw	120 kDa
PTM	Both Ser-745 and Ser-756 become phosphorylated when T-cells are exposed to phorbol esters (PubMed:11700305). Phosphorylation on Thr-758 (but not on Ser-756) allows interaction with 14-3-3 proteins (PubMed:11700305, PubMed:16301335).

Images



ARG44735 anti-S100P antibody IHC-P image

Immunohistochemistry: Human placenta stained with ARG44735 anti-S100P antibody at 7.5 µg/mL dilution.



ARG44735 anti-S100P antibody IP image

Immunoprecipitation: HT29 lysate immunoprecipitated with 2.5 µg of ARG44735 anti-S100P antibody.