

## ARG44774 anti-ACTG2 antibody

Package: 50 µg  
Store at: -20°C

### Summary

Product Description	Mouse Monoclonal antibody recognizes ACTG2
Tested Reactivity	Hu
Tested Application	IHC-P
Host	Mouse
Clonality	Monoclonal
Isotype	IgG1
Target Name	ACTG2
Species	Human
Epitope	EHPTLLTEAP LNPKANREKM TQIMFETFNV PAMYVAIQAV LSLYASGRRT GIVLDSGDGV THNVPIYEGY ALPHAIMRLD LAGRDLDYL MKILTERGYS FVTTAEREIV RDIKEKLCYV ALDFENEMAT AASSSSLEKS YELPDGQVIT
Conjugation	Un-conjugated
Alternate Names	ACTG2; Actin Gamma 2, Smooth Muscle; ACTSG; ACTA3; ACTL3; Actin, Gamma 2, Smooth Muscle, Enteric; Actin, Gamma-Enteric Smooth Muscle; Alpha-Actin-3; Smooth Muscle Gamma-Actin; Actin-Like Protein; Gamma-2-Actin; EC 3.6.4.-; MMIH55; VSCM1; ACTE; VSCM; ACT

### Application Instructions

Application table	Application	Dilution
	IHC-P	1:1000
Application Note	* The dilutions indicate recommended starting dilutions and the optimal dilutions or concentrations should be determined by the scientist.	

### Properties

Form	Liquid
Purification	Protein A purification
Buffer	PBS with 0.09% sodium azide
Preservative	0.09% sodium azide
Storage instruction	For continuous use, store undiluted antibody at 2-8°C for up to a week. For long-term storage, aliquot and store at -20°C or below. Storage in frost free freezers is not recommended. Avoid repeated freeze/thaw cycles. Suggest spin the vial prior to opening. The antibody solution should be gently mixed before use.
Note	For laboratory research only, not for drug, diagnostic or other use.

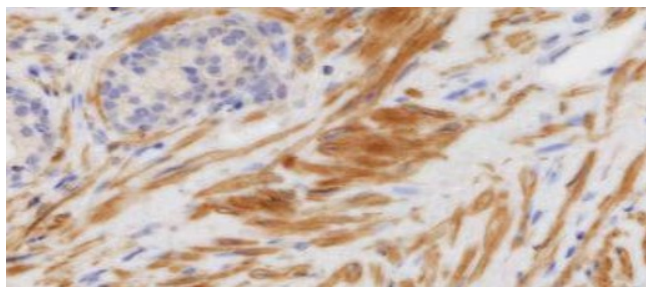
## Bioinformation

---

Gene Symbol	ACTG2
Gene Full Name	Actin Gamma 2, Smooth Muscle
Background	ctins are highly conserved proteins that are involved in various types of cell motility and in the maintenance of the cytoskeleton. Three types of actins, alpha, beta and gamma, have been identified in vertebrates. Alpha actins are found in muscle tissues and are a major constituent of the contractile apparatus. The beta and gamma actins co-exist in most cell types as components of the cytoskeleton and as mediators of internal cell motility. This gene encodes actin gamma 2; a smooth muscle actin found in enteric tissues. Alternative splicing results in multiple transcript variants encoding distinct isoforms. Based on similarity to peptide cleavage of related actins, the mature protein of this gene is formed by removal of two N-terminal peptides.[provided by RefSeq, Dec 2010]
Function	Actins are highly conserved proteins that are involved in various types of cell motility and are ubiquitously expressed in all eukaryotic cells. [Uniprot]
PTM	Acetylation, Isopeptide bond, Methylation, Oxidation. [Uniprot]
Cellular Localization	Cytoplasm, Cytoskeleton. [Uniprot]

## Images

---



ARG44774 anti-ACTG2 antibody IHC-P image

Immunohistochemistry: Human prostate stained with ARG44774 anti-ACTG2 antibody at 1 µg/mL dilution.