

ARG44775 anti-GPR110 antibody

Package: 50 µg
Store at: -20°C

Summary

Product Description	Mouse Monoclonal antibody recognizes GPR110
Tested Reactivity	Hu
Tested Application	IHC-P
Host	Mouse
Clonality	Monoclonal
Isotype	IgG1
Target Name	GPR110
Species	Human
Epitope	FLGKNDGIKT KKELIVNKKK
Conjugation	Un-conjugated
Alternate Names	ADGRF1; Adhesion G Protein-Coupled Receptor F1; PGR19; G Protein-Coupled Receptor 110; HGPCR36; GPR110; Adhesion G-Protein Coupled Receptor F1; G Protein-Coupled Receptor PGR19; Probable G-Protein Coupled Receptor 110; G-Protein Coupled Receptor KPG_012; Seven Transmembrane Helix Receptor; G Protein-Coupled Receptor KPG_012; KPG_012

Application Instructions

Application table	Application	Dilution
	IHC-P	1:200
Application Note	* The dilutions indicate recommended starting dilutions and the optimal dilutions or concentrations should be determined by the scientist.	

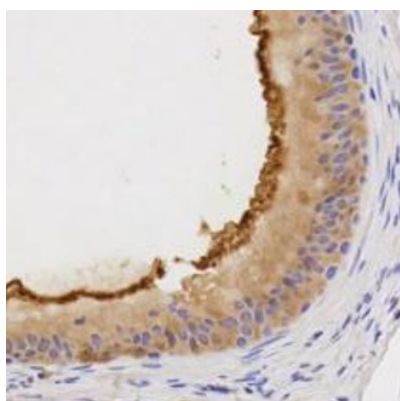
Properties

Form	Liquid
Purification	Protein A purification
Buffer	PBS with 0.09% sodium azide
Preservative	0.09% sodium azide
Storage instruction	For continuous use, store undiluted antibody at 2-8°C for up to a week. For long-term storage, aliquot and store at -20°C or below. Storage in frost free freezers is not recommended. Avoid repeated freeze/thaw cycles. Suggest spin the vial prior to opening. The antibody solution should be gently mixed before use.
Note	For laboratory research only, not for drug, diagnostic or other use.

Bioinformation

Gene Symbol	ADGRF1
Gene Full Name	Adhesion G Protein-Coupled Receptor F1
Background	Predicted to enable G protein-coupled receptor activity. Predicted to be involved in G protein-coupled receptor signaling pathway. Predicted to act upstream of or within several processes, including memory; nervous system development; and positive regulation of CREB transcription factor activity. Predicted to be located in extracellular region and plasma membrane. Predicted to be integral component of membrane. [provided by Alliance of Genome Resources, Apr 2022]
PTM	Disulfide bond, Glycoprotein. [Uniprot]
Cellular Localization	Cell membrane, Membrane, Secreted. [Uniprot]

Images



ARG44775 anti-GPR110 antibody IHC-P image

Immunohistochemistry: Human epididymis stained with ARG44775 anti-GPR110 antibody at 5 µg/mL dilution.