

ARG44934 anti-SMC2 acetyl (Lys144) antibody

Package: 50 µg
Store at: -20°C

Summary

Product Description	Mouse Monoclonal antibody recognizes SMC2 acetyl (Lys144)
Tested Reactivity	Hu
Tested Application	IP, WB
Host	Mouse
Clonality	Monoclonal
Isotype	IgG2a
Target Name	SMC2
Species	Human
Conjugation	Un-conjugated
Alternate Names	SMC2; Structural Maintenance Of Chromosomes 2; HCAP-E; SMC2L1; CAP-E; SMC2 (Structural Maintenance Of Chromosomes 2, Yeast)-Like 1; Structural Maintenance Of Chromosomes Protein 2; Chromosome-Associated Protein E; XCAP-E Homolog; SMC Protein 2; SMC-2; CAPE; Structural Maintenance Of Chromosomes (SMC) Family Member, Chromosome-Associated Protein E; SMC2 Structural Maintenance Of Chromosomes 2-Like 1 (Yeast)

Application Instructions

Application table	Application	Dilution
	IP	1:100
	WB	1:1000
Application Note	* The dilutions indicate recommended starting dilutions and the optimal dilutions or concentrations should be determined by the scientist.	

Properties

Form	Liquid
Purification	Protein A purification
Buffer	PBS with 0.09% sodium azide
Preservative	0.09% sodium azide
Storage instruction	For continuous use, store undiluted antibody at 2-8°C for up to a week. For long-term storage, aliquot and store at -20°C or below. Storage in frost free freezers is not recommended. Avoid repeated freeze/thaw cycles. Suggest spin the vial prior to opening. The antibody solution should be gently mixed before use.
Note	For laboratory research only, not for drug, diagnostic or other use.

Bioinformation

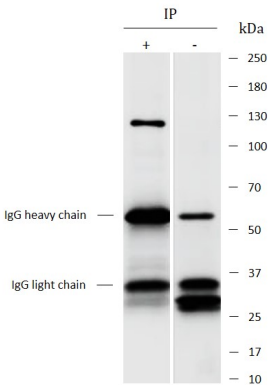
Gene Symbol	SMC2
Gene Full Name	Structural Maintenance Of Chromosomes 2
Background	Predicted to enable ATP binding activity; chromatin binding activity; and single-stranded DNA binding activity. Involved in mitotic chromosome condensation. Located in condensed chromosome; cytoplasm; and nuclear lumen. Part of condensin complex. [provided by Alliance of Genome Resources, Apr 2022]
Function	Central component of the condensin complex, a complex required for conversion of interphase chromatin into mitotic-like condense chromosomes. The condensin complex probably introduces positive supercoils into relaxed DNA in the presence of type I topoisomerases and converts nicked DNA into positive knotted forms in the presence of type II topoisomerases. [UniProt]
PTM	Acetylation. [UniProt]
Cellular Localization	Chromosome, Cytoplasm, Nucleus. [UniProt]

Images



ARG44934 anti-SMC2 acetyl (Lys144) antibody WB image

Western blot: Raji stained with ARG44934 anti-SMC2 acetyl (Lys144) antibody at 1 µg/mL dilution.



ARG44934 anti-SMC2 antibody IP image

Immunoprecipitation: Raji lysate immunoprecipitated with 2.5 µg of ARG44934 anti-SMC2 antibody.