

## ARG44960 anti-TMEM161B antibody

Package: 50 µg  
Store at: -20°C

### Summary

Product Description	Rat Monoclonal antibody recognizes TMEM161B
Tested Reactivity	Hu
Tested Application	IHC-P
Host	Rat
Clonality	Monoclonal
Isotype	IgG2a
Target Name	TMEM161B
Species	Human
Epitope	QHPTTEELRI LAGKQKQGKT KKDRKYNGHI ESKPLTIPKD IDLHLETGSV TEVDTLALHY
Conjugation	Un-conjugated
Alternate Names	TMEM161B; Transmembrane Protein 161B; MGC33214; FLB3342; PRO1313

### Application Instructions

Application table	Application	Dilution
	IHC-P	1:200
Application Note	* The dilutions indicate recommended starting dilutions and the optimal dilutions or concentrations should be determined by the scientist.	

### Properties

Form	Liquid
Purification	Protein A purification
Buffer	PBS with 0.09% sodium azide
Preservative	0.09% sodium azide
Storage instruction	For continuous use, store undiluted antibody at 2-8°C for up to a week. For long-term storage, aliquot and store at -20°C or below. Storage in frost free freezers is not recommended. Avoid repeated freeze/thaw cycles. Suggest spin the vial prior to opening. The antibody solution should be gently mixed before use.
Note	For laboratory research only, not for drug, diagnostic or other use.

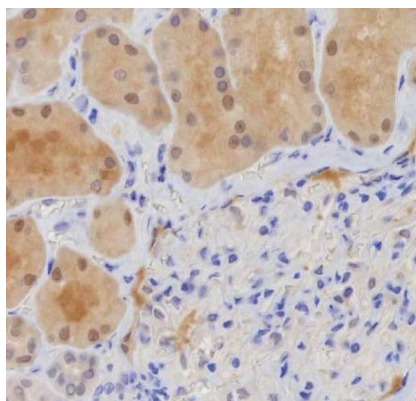
### Bioinformation

Gene Symbol	TMEM161B
Gene Full Name	Transmembrane Protein 161B

Background	Predicted to enable nucleic acid binding activity. Predicted to be involved in DNA integration. Predicted to be integral component of membrane. [provided by Alliance of Genome Resources, Apr 2022]
Function	Inhibits potassium and calcium currents in the cardiomyocytes, this assists in timely action potential repolarization and thereby maintains normal cardiac rhythm. [UniProt]
PTM	Glycoprotein. [UniProt]
Cellular Localization	Cell membrane, Membrane. [UniProt]

## Images

---



ARG44960 anti-TMEM161B antibody IHC-P image

Immunohistochemistry: Human kidney stained with ARG44960 anti-TMEM161B antibody at 5 µg/mL dilution.