

ARG45001 anti-Ig Kappa Light Chain antibody [RM103]

Package: 50 µg

Store at: -20°C

Summary

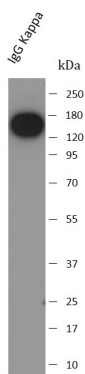
Product Description	Rabbit monoclonal antibody [RM103] recognizes Mouse Ig Kappa Light Chain
Tested Reactivity	Ms
Tested Application	ELISA, WB
Specificity	No cross reactivity with the lamda light chain, human IgG, rat IgG, or goat IgG, and slightly reacts to reduced lambda light chain.
Host	Rabbit
Clonality	Monoclonal
Clone	RM103
Isotype	IgG
Target Name	Ig Kappa Light Chain
Species	Mouse
Conjugation	Un-conjugated

Application Instructions

Application table	Application	Dilution
	ELISA	0.005 - 0.2 µg/mL
	WB	0.1 - 0.5 µg/ml
Application Note	WB: This antibody only reacts to nonreduced Mouse Ig Kappa Light Chain. * The dilutions indicate recommended starting dilutions and the optimal dilutions or concentrations should be determined by the scientist.	

Properties

Form	Liquid
Purification	Protein A affinity purified.
Buffer	PBS with 50% Glycerol, 1% BSA and 0.09% sodium azide
Preservative	0.09% sodium azide
Stabilizer	50% Glycerol, 1% BSA and 0.09%
Concentration	1 mg/ml
Storage instruction	For continuous use, store undiluted antibody at 2-8°C for up to a week. For long-term storage, aliquot and store at -20°C or below. Storage in frost free freezers is not recommended. Avoid repeated freeze/thaw cycles. Suggest spin the vial prior to opening. The antibody solution should be gently mixed before use.
Note	For laboratory research only, not for drug, diagnostic or other use.



ARG45001 anti-Ig Kappa Light Chain antibody [RM103] WB image

Western blot: Mouse IgG1 Kappa stained with ARG45001 anti-Ig Kappa Light Chain antibody [RM103] at 0.2 µg/ml dilution.