

## ARG45081 anti-RhoA Phospho (Ser188) antibody

Package: 50 µl  
Store at: -20°C

### Summary

|                     |  |
|---------------------|--|
| Product Description | Rabbit Polyclonal antibody recognizes RhoA Phospho (Ser188)  |
| Tested Reactivity   | Hu, Ms, Rat  |
| Tested Application  | WB   |
| Host                | Rabbit   |
| Clonality           | Polyclonal   |
| Isotype             | IgG  |
| Target Name         | RhoA   |
| Species             | Human  |
| Immunogen           | Phospho-RhoA (Ser-188) synthetic peptide (coupled to KLH) corresponding to amino acid residues around serine 188 of human RhoA. This peptide sequence is highly conserved in rat, mouse, and chicken RhoA, but is not found in RhoB or RhoC proteins.  |
| Conjugation         | Un-conjugated  |
| Alternate Names     | RHOA; Ras Homolog Family Member A; RHOH12; Rho12; ARH12; ARHA; Transforming Protein RhoA; Epididymis Secretory Sperm Binding Protein; Ras Homolog Gene Family, Member A; Aplysia Ras-Related Homolog 12; Small GTP Binding Protein RhoA; Rho CDNA Clone 12; Oncogene RHO H12; EC 3.6.5.2; EDFAOB; RHO12; H12 |

### Application Instructions

| Application table | Application | Dilution |
|-------------------|-------------|----------|
|                   | WB          | 1:1000   |

**Application Note** \* The dilutions indicate recommended starting dilutions and the optimal dilutions or concentrations should be determined by the scientist.

### Properties

|                     |  |
|---------------------|--|
| Form                | Liquid   |
| Purification        | Antigen Affinity Purified.   |
| Buffer              | PBS, 0.05% NaN <sub>3</sub> , 50% Glycerol and 0.1 % BSA.  |
| Stabilizer          | 50% Glycerol and 0.1 % BSA   |
| Storage instruction | For continuous use, store undiluted antibody at 2-8°C for up to a week. For long-term storage, aliquot and store at -20°C or below. Storage in frost free freezers is not recommended. Avoid repeated freeze/thaw cycles. Suggest spin the vial prior to opening. The antibody solution should be gently mixed before use. |
| Note                | For laboratory research only, not for drug, diagnostic or other use.   |

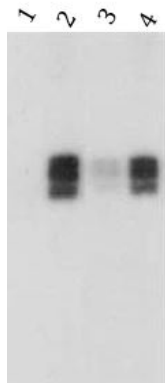
## Bioinformation

---

|                       |   |
|-----------------------|---|
| Gene Symbol           | RHOA  |
| Gene Full Name        | Ras Homolog Family Member A   |
| Background            | This gene encodes a member of the Rho family of small GTPases, which cycle between inactive GDP-bound and active GTP-bound states and function as molecular switches in signal transduction cascades. Rho proteins promote reorganization of the actin cytoskeleton and regulate cell shape, attachment, and motility. Overexpression of this gene is associated with tumor cell proliferation and metastasis. Multiple alternatively spliced variants have been identified. [provided by RefSeq, Sep 2015] |
| Function              | When activated by DAAM1 may signal centrosome maturation and chromosomal segregation during cell division. May also be involved in contractile ring formation during cytokinesis. [Uniprot]   |
| Calculated Mw         | 22 kDa  |
| PTM                   | ADP-ribosylation, Glycoprotein, Isopeptide bond, Lipoprotein, Methylation, Phosphoprotein, Prenylation, Ubl conjugation. [Uniprot]  |
| Cellular Localization | Cell membrane, Cell projection, Cytoplasm, Cytoskeleton, Membrane, Nucleus. [Uniprot]   |

## Images

---



ARG45081 anti-RhoA Phospho (Ser188) antibody WB image

Western blot: Human RhoA GST fusion recombinant unphosphorylated (lanes 1) or phosphorylated with PKA (lanes 2, 3, 4). The blots were probed with anti-RhoA Phospho (Ser188) antibody (lanes 1-4). The latter antibody was used in the presence of no peptide (lanes 1 & 2), phospho-Rho (Ser-188) peptide (lane 3), or a non-specific phosphoserine peptide (lane 4).