

## ARG45136 anti-SLC12A1 / NKCC2 antibody

Package: 50 µg  
Store at: -20°C

### Summary

Product Description	Rabbit Polyclonal antibody recognizes SLC12A1 / NKCC2
Tested Reactivity	Hu, Ms, Rat, Mk
Tested Application	ICC/IF, IHC-P, WB
Host	Rabbit
Clonality	Polyclonal
Isotype	Rabbit IgG
Target Name	SLC12A1 / NKCC2
Species	Human
Immunogen	Synthetic peptide corresponding to N-terminal region of human SLC12A1 / NKCC2.
Conjugation	Un-conjugated
Alternate Names	SLC12A1; Solute carrier family 12 member 1; BSC1; potassium; Solute carrier family 12 member 1; Kidney-specific Na-K-Cl symporter; Bumetanide-sensitive sodium-; NKCC2; CCC2; BSC; Bumetanide-Sensitive Cotransporter; Na-K-2Cl Cotransporter

### Application Instructions

Application table	Application	Dilution
	ICC/IF	5 µg/ml
	IHC-P	2-5 µg/ml
	WB	0.25-0.5 µg/ml
Application Note	* The dilutions indicate recommended starting dilutions and the optimal dilutions or concentrations should be determined by the scientist.	
Observed Size	150-290 kDa	

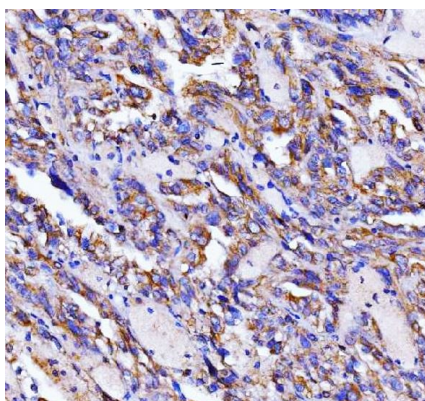
### Properties

Form	Liquid
Purification	Affinity purification with immunogen.
Buffer	0.2% Na <sub>2</sub> HPO <sub>4</sub> , 0.9% NaCl and 4% Trehalose.
Stabilizer	4% Trehalose
Concentration	0.5 mg/ml
Storage instruction	For continuous use, store undiluted antibody at 2-8°C for up to a week. For long-term storage, aliquot and store at -20°C or below. Storage in frost free freezers is not recommended. Avoid repeated freeze/thaw cycles. Suggest spin the vial prior to opening. The antibody solution should be gently mixed before use.

## Bioinformation

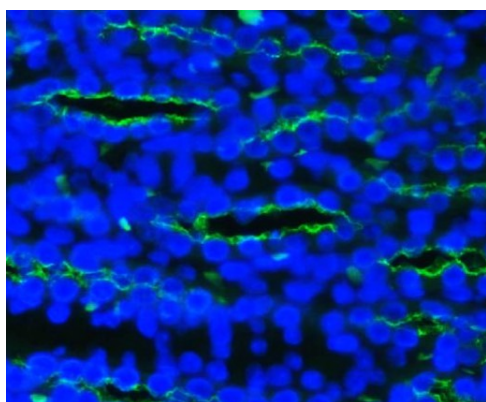
Gene Symbol	SLC12A1
Gene Full Name	Solute carrier family 12 member 1
Background	This gene encodes a kidney-specific sodium-potassium-chloride cotransporter that is expressed on the luminal membrane of renal epithelial cells of the thick ascending limb of Henle's loop and the macula densa. It plays a key role in concentrating urine and accounts for most of the NaCl resorption. It is sensitive to such diuretics as furosemide and bumetanide. Some Bartter-like syndromes result from defects in this gene. Alternative splicing results in multiple transcript variants encoding distinct isoforms. Additional splice variants have been described but their biological validity in humans has not been experimentally proven.[provided by RefSeq, May 2010]
Function	Electrically silent transporter system. Mediates sodium and chloride reabsorption. Plays a vital role in the regulation of ionic balance and cell volume. [UniProt]
Calculated Mw	121 kDa
PTM	Glycoprotein; Phosphoprotein. [UniProt]
Cellular Localization	Membrane; Multi-pass membrane protein; Apical cell membrane. [UniProt]

## Images



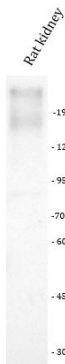
ARG45136 anti-SLC12A1 / NKCC2 antibody IHC-P image

Immunohistochemistry: Human renal cancer tissue stained with ARG45136 anti-SLC12A1 / NKCC2 antibody at 2 µg/ml dilution.



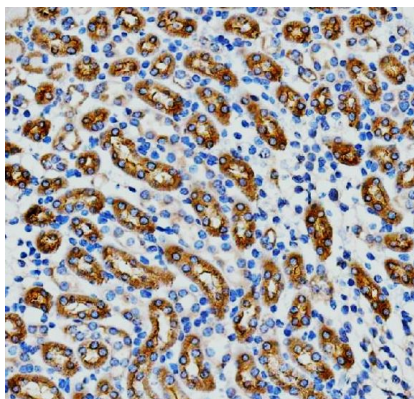
ARG45136 anti-SLC12A1 / NKCC2 antibody IHC-P image

Immunohistochemistry: Rat kidney stained with ARG45136 anti-SLC12A1 / NKCC2 antibody at 5 µg/ml dilution.



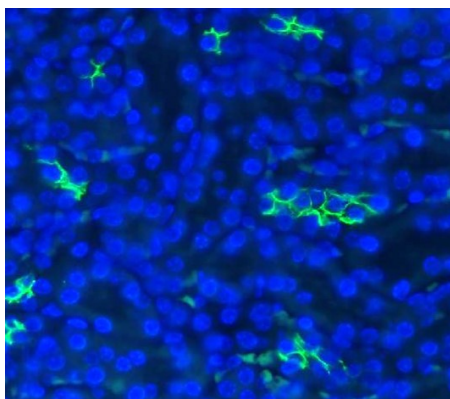
ARG45136 anti-SLC12A1 / NKCC2 antibody WB image

Western blot: Rat kidney stained with ARG45136 anti-SLC12A1 / NKCC2 antibody at 0.5  $\mu\text{g/ml}$  dilution.



ARG45136 anti-SLC12A1 / NKCC2 antibody IHC-P image

Immunohistochemistry: Mouse kidney stained with ARG45136 anti-SLC12A1 / NKCC2 antibody at 2  $\mu\text{g/ml}$  dilution.



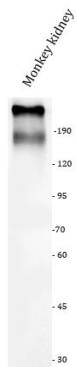
ARG45136 anti-SLC12A1 / NKCC2 antibody IHC-P image

Immunohistochemistry: Mouse kidney stained with ARG45136 anti-SLC12A1 / NKCC2 antibody at 5  $\mu\text{g/ml}$  dilution.



ARG45136 anti-SLC12A1 / NKCC2 antibody WB image

Western blot: Mouse kidney stained with ARG45136 anti-SLC12A1 / NKCC2 antibody at 0.5  $\mu\text{g/ml}$  dilution.



#### ARG45136 anti-SLC12A1 / NKCC2 antibody WB image

Western blot: Monkey kidney stained with ARG45136 anti-SLC12A1 / NKCC2 antibody at 0.5 µg/ml dilution.