

## ARG45138 anti-Cytochrome P450 1A2 antibody

Package: 50 µg  
Store at: -20°C

### Summary

Product Description	Rabbit Polyclonal antibody recognizes Cytochrome P450 1A2
Tested Reactivity	Hu, Ms, Rat
Tested Application	IHC-P, WB
Host	Rabbit
Clonality	Polyclonal
Isotype	Rabbit IgG
Target Name	Cytochrome P450 1A2
Species	Human
Immunogen	Recombinant protein containing to human Cytochrome P450 1A2.
Conjugation	Un-conjugated
Alternate Names	P3-450; Cytochrome P450 4; Cytochrome P; Cytochrome P450-P3; Cytochrome P450 1A2; EC 1.14.14.1; P450(PA); 3; CP12; CYPIA2

### Application Instructions

Application table	Application	Dilution
	IHC-P	0.5-1 µg/ml
	WB	0.1-0.5 µg/ml
Application Note	* The dilutions indicate recommended starting dilutions and the optimal dilutions or concentrations should be determined by the scientist.	
Observed Size	58 kDa	

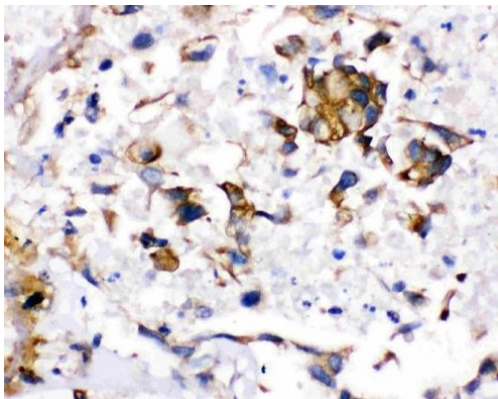
### Properties

Form	Liquid
Purification	Affinity purification with immunogen.
Buffer	0.9% NaCl, 0.2% Na <sub>2</sub> HPO <sub>4</sub> , 0.05% Sodium azide and 5% BSA.
Preservative	0.05% Sodium azide
Stabilizer	5% BSA
Concentration	0.5 mg/ml
Storage instruction	For continuous use, store undiluted antibody at 2-8°C for up to a week. For long-term storage, aliquot and store at -20°C or below. Storage in frost free freezers is not recommended. Avoid repeated freeze/thaw cycles. Suggest spin the vial prior to opening. The antibody solution should be gently mixed before use.

Bioinformation

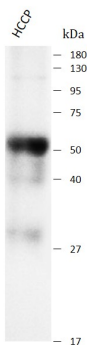
Gene Symbol	CYP1A2
Gene Full Name	Cytochrome P450 Family 1 Subfamily A Member 2
Background	This gene encodes a member of the cytochrome P450 superfamily of enzymes. The cytochrome P450 proteins are monooxygenases which catalyze many reactions involved in drug metabolism and synthesis of cholesterol, steroids and other lipids. The protein encoded by this gene localizes to the endoplasmic reticulum and its expression is induced by some polycyclic aromatic hydrocarbons (PAHs), some of which are found in cigarette smoke. The enzyme's endogenous substrate is unknown; however, it is able to metabolize some PAHs to carcinogenic intermediates. Other xenobiotic substrates for this enzyme include caffeine, aflatoxin B1, and acetaminophen. The transcript from this gene contains four Alu sequences flanked by direct repeats in the 3' untranslated region. [provided by RefSeq, Jul 2008]
Function	Cytochromes P450 are a group of heme-thiolate monooxygenases. In liver microsomes, this enzyme is involved in an NADPH-dependent electron transport pathway. It oxidizes a variety of structurally unrelated compounds, including steroids, fatty acids, and xenobiotics. Most active in catalyzing 2-hydroxylation. Caffeine is metabolized primarily by cytochrome CYP1A2 in the liver through an initial N3-demethylation. Also acts in the metabolism of aflatoxin B1 and acetaminophen. Participates in the bioactivation of carcinogenic aromatic and heterocyclic amines. Catalyzes the N-hydroxylation of heterocyclic amines and the O-deethylation of phenacetin. [UniProt]
Calculated Mw	58 kDa
PTM	Glycoprotein. [UniProt]
Cellular Localization	Endoplasmic reticulum membrane; Microsome membrane. [UniProt]

Images



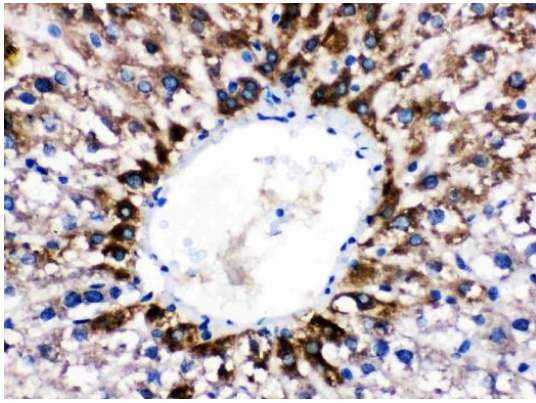
ARG45138 anti-Cytochrome P450 1A2 antibody IHC-P image

Immunohistochemistry: Human liver cancer stained with ARG45138 anti-Cytochrome P450 1A2 antibody at 1 µg/ml dilution.



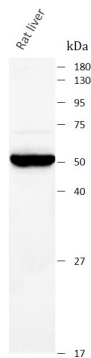
ARG45138 anti-Cytochrome P450 1A2 antibody WB image

Western blot: Human HCCP stained with ARG45138 anti-Cytochrome P450 1A2 antibody at 0.5 µg/ml dilution.



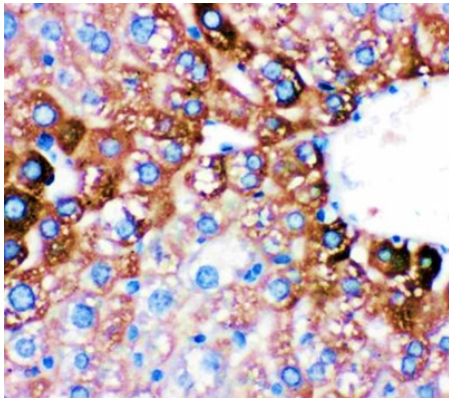
ARG45138 anti-Cytochrome P450 1A2 antibody IHC-P image

Immunohistochemistry: Rat liver stained with ARG45138 anti-Cytochrome P450 1A2 antibody at 1  $\mu\text{g}/\text{ml}$  dilution.



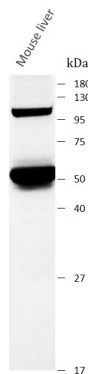
ARG45138 anti-Cytochrome P450 1A2 antibody WB image

Western blot: Rat liver stained with ARG45138 anti-Cytochrome P450 1A2 antibody at 0.5  $\mu\text{g}/\text{ml}$  dilution.



ARG45138 anti-Cytochrome P450 1A2 antibody IHC-P image

Immunohistochemistry: Mouse liver stained with ARG45138 anti-Cytochrome P450 1A2 antibody at 1  $\mu\text{g}/\text{ml}$  dilution.



ARG45138 anti-Cytochrome P450 1A2 antibody WB image

Western blot: Mouse liver stained with ARG45138 anti-Cytochrome P450 1A2 antibody at 0.5  $\mu\text{g}/\text{ml}$  dilution.