

ARG45154 anti-EVA1A / TMEM166 antibody

Package: 50 µg
Store at: -20°C

Summary

Product Description	Rabbit Polyclonal antibody recognizes EVA1A / TMEM166
Tested Reactivity	Hu, Ms, Rat
Tested Application	FACS, IHC-P, WB
Host	Rabbit
Clonality	Polyclonal
Isotype	Rabbit IgG
Target Name	EVA1A / TMEM166
Species	Human
Immunogen	Synthetic peptide corresponding to N-terminal region of human EVA1A / TMEM166.
Conjugation	Un-conjugated
Alternate Names	EVA1A; eva-1 homolog A (C. elegans); Protein eva-1 homolog A; Transmembrane protein 166; FAM176A; Protein FAM176A; TMEM166

Application Instructions

Application table	Application	Dilution
	FACS	1 µg/10 ⁶ cells
	IHC-P	1 µg/ml
	WB	0.5 µg/ml
Application Note	* The dilutions indicate recommended starting dilutions and the optimal dilutions or concentrations should be determined by the scientist.	
Observed Size	21 kDa	

Properties

Form	Liquid
Purification	Affinity purification with immunogen.
Buffer	0.2% Na ₂ HPO ₄ , 0.9% NaCl, 0.05% Sodium azide and 4% Trehalose.
Preservative	0.05% Sodium azide
Stabilizer	4% Trehalose
Concentration	0.5 mg/ml
Storage instruction	For continuous use, store undiluted antibody at 2-8°C for up to a week. For long-term storage, aliquot and store at -20°C or below. Storage in frost free freezers is not recommended. Avoid repeated freeze/thaw cycles. Suggest spin the vial prior to opening. The antibody solution should be gently mixed before use.

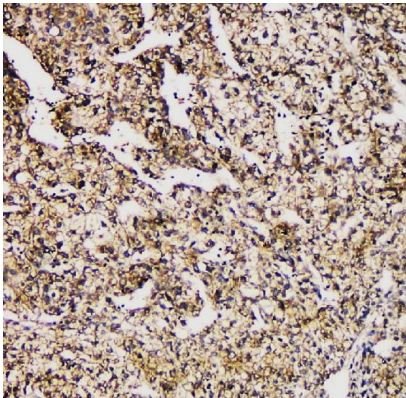
Note

For laboratory research only, not for drug, diagnostic or other use.

Bioinformation

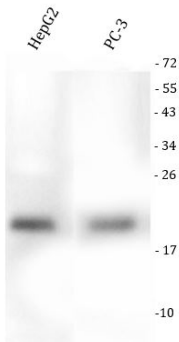
Gene Symbol	EVA1A
Gene Full Name	eva-1 homolog A (C. elegans)
Background	Predicted to be involved in apoptotic process and autophagy. Located in intracellular membrane-bounded organelle and plasma membrane. [provided by Alliance of Genome Resources, Nov 2024]
Function	Acts as a regulator of programmed cell death, mediating both autophagy and apoptosis. [UniProt]
Calculated Mw	17 kDa
PTM	Phosphoprotein. [UniProt]
Cellular Localization	Endoplasmic reticulum membrane; Lysosome membrane. [UniProt]

Images



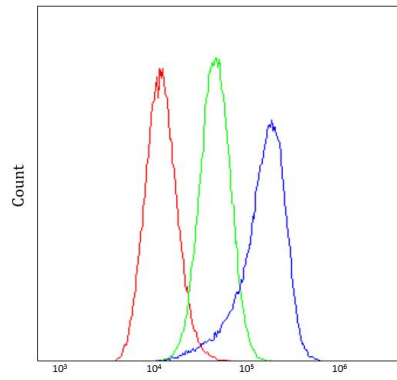
ARG45154 anti-EVA1A / TMEM166 antibody IHC-P image

Immunohistochemistry: Human liver cancer stained with ARG45154 anti-EVA1A / TMEM166 antibody at 1 µg/ml dilution.



ARG45154 anti-EVA1A / TMEM166 antibody WB image

Western blot: HepG2 and PC-3 stained with ARG45154 anti-EVA1A / TMEM166 antibody at 0.5 µg/ml dilution.



ARG45154 anti-EVA1A / TMEM166 antibody FACS image

Flow Cytometry: A549 stained with ARG45154 anti-EVA1A / TMEM166 antibody at $1 \mu\text{g}/10^6$ cells dilution.