

## ARG45156 anti-CPAMD8 antibody

Package: 50 µg  
Store at: -20°C

### Summary

Product Description	Rabbit Polyclonal antibody recognizes CPAMD8
Tested Reactivity	Hu
Tested Application	IHC-P, WB
Host	Rabbit
Clonality	Polyclonal
Isotype	Rabbit IgG
Target Name	CPAMD8
Species	Human
Immunogen	Recombinant protein containing to human CPAMD8.
Conjugation	Un-conjugated
Alternate Names	KIAA1283; K-CAP; VIP; C3 And PZP-Like Alpha-2-Macroglobulin Domain-Containing Protein 8Alpha-2; Macroglobulin Family Protein VIP; ASGD8

### Application Instructions

Application table	Application	Dilution
	IHC-P	0.5-1 µg/ml
	WB	0.1-0.5 µg/ml
Application Note	* The dilutions indicate recommended starting dilutions and the optimal dilutions or concentrations should be determined by the scientist.	
Observed Size	207 kDa	

### Properties

Form	Liquid
Purification	Affinity purification with immunogen.
Buffer	0.2% Na <sub>2</sub> HPO <sub>4</sub> , 0.9% NaCl, 0.05% Sodium azide and 4% Trehalose.
Preservative	0.05% Sodium azide
Stabilizer	4% Trehalose
Concentration	0.5 mg/ml
Storage instruction	For continuous use, store undiluted antibody at 2-8°C for up to a week. For long-term storage, aliquot and store at -20°C or below. Storage in frost free freezers is not recommended. Avoid repeated freeze/thaw cycles. Suggest spin the vial prior to opening. The antibody solution should be gently mixed before use.

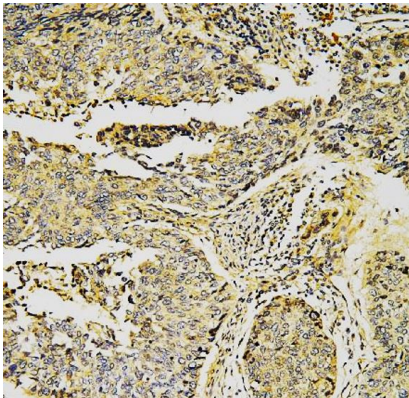
Note

For laboratory research only, not for drug, diagnostic or other use.

Bioinformation

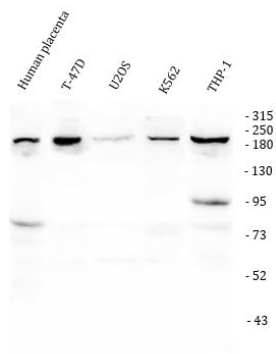
Gene Symbol	CPAMD8
Gene Full Name	C3 and PZP like, alpha-2-macroglobulin domain containing 8
Background	This gene encodes a member of the protease inhibitor I39 (alpha-2-macroglobulin) family of proteins. These proteins are important in innate and acquired immunity. The encoded protein is membrane-associated and proteolytically processed to generate two chains. Mutations in this gene cause a form of anterior segment dysgenesis, a developmental disorder of the eye. [provided by RefSeq, May 2017]
Calculated Mw	207 kDa
PTM	Disulfide bond; Glycoprotein. [UniProt]
Cellular Localization	Cell membrane; Secreted. [UniProt]

Images



ARG45156 anti-CPAMD8 antibody IHC-P image

Immunohistochemistry: Human lung cancer stained with ARG45156 anti-CPAMD8 antibody at 1 µg/ml dilution.



ARG45156 anti-CPAMD8 antibody WB image

Western blot: Human placenta, T-47D, U2OS, K562, and THP-1 stained with ARG45156 anti-CPAMD8 antibody at 0.5 µg/ml dilution.