

ARG45159 anti-Cytochrome P450 2B6/CYP2B6 antibody

Package: 50 µg
Store at: -20°C

Summary

Product Description	Rabbit Polyclonal antibody recognizes Cytochrome P450 2B6/CYP2B6
Tested Reactivity	Hu
Tested Application	FACS, ICC/IF, WB
Host	Rabbit
Clonality	Polyclonal
Isotype	Rabbit IgG
Target Name	CYP2B6
Species	Human
Immunogen	Synthetic peptide corresponding to N-terminal region of human CYP2B6.
Conjugation	Un-conjugated
Alternate Names	Cytochrome P450 2B6; 1,4-cineole 2-exo-monooxygenase; CYP11B6; Cytochrome P450 11B1; CYP2B6

Application Instructions

Application table	Application	Dilution
	FACS	1 - 3 µg/10 ⁶ cells
	ICC/IF	5 µg/ml
	WB	0.1-0.5 µg/ml
Application Note	* The dilutions indicate recommended starting dilutions and the optimal dilutions or concentrations should be determined by the scientist.	
Observed Size	56 kDa	

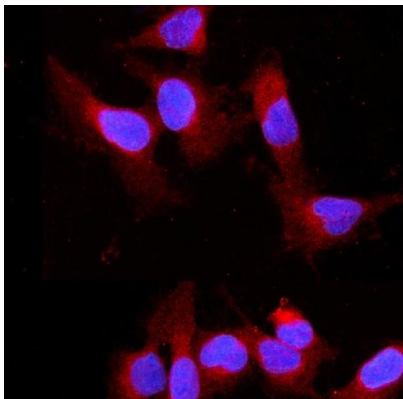
Properties

Form	Liquid
Purification	Affinity purification with immunogen.
Buffer	0.2% Na ₂ HPO ₄ , 0.9% NaCl, 0.05% Sodium azide and 4% Trehalose.
Preservative	0.05% Sodium azide
Stabilizer	4% Trehalose
Concentration	0.5 mg/ml
Storage instruction	For continuous use, store undiluted antibody at 2-8°C for up to a week. For long-term storage, aliquot and store at -20°C or below. Storage in frost free freezers is not recommended. Avoid repeated freeze/thaw cycles. Suggest spin the vial prior to opening. The antibody solution should be gently mixed before use.

Bioinformation

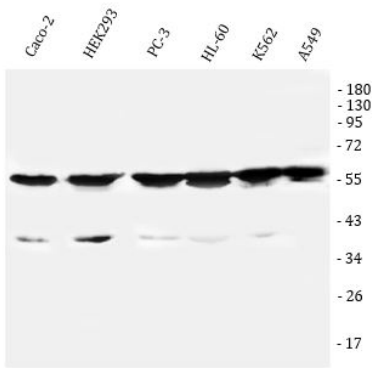
Gene Symbol	CYP2B6
Gene Full Name	cytochrome P450 family 2 subfamily B member 6
Background	This gene, CYP2B6, encodes a member of the cytochrome P450 superfamily of enzymes. The cytochrome P450 proteins are monooxygenases which catalyze many reactions involved in drug metabolism and synthesis of cholesterol, steroids and other lipids. This protein localizes to the endoplasmic reticulum and its expression is induced by phenobarbital. The enzyme is known to metabolize some xenobiotics, such as the anti-cancer drugs cyclophosphamide and ifosphamide. Transcript variants for this gene have been described; however, it has not been resolved whether these transcripts are in fact produced by this gene or by a closely related pseudogene, CYP2B7. Both the gene and the pseudogene are located in the middle of a CYP2A pseudogene found in a large cluster of cytochrome P450 genes from the CYP2A, CYP2B and CYP2F subfamilies on chromosome 19q. [provided by RefSeq, Jul 2008]
Function	A cytochrome P450 monooxygenase involved in the metabolism of endocannabinoids and steroids. [UniProt]
Calculated Mw	56 kDa
PTM	Phosphoprotein. [UniProt]
Cellular Localization	Endoplasmic reticulum membrane; Microsome membrane. [UniProt]

Images



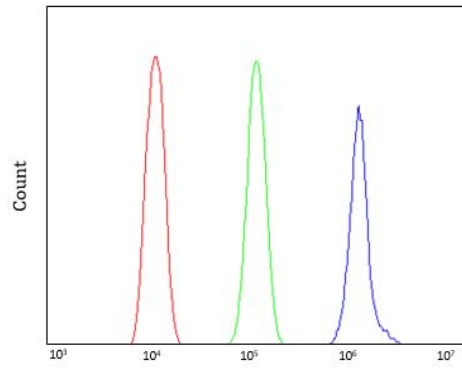
ARG45159 anti-Cytochrome P450 2B6/CYP2B6 antibody ICC/IF image

Immunofluorescence: U2OS stained with ARG45159 anti-Cytochrome P450 2B6/CYP2B6 antibody at 5 ug/ml dilution.



ARG45159 anti-SCN4B antibody WB image

Western blot: Caco-2, HEK293, PC-3, HL-60, K562, and A549 stained with ARG45159 anti-SCN4B antibody at 0.5 µg/ml dilution.



ARG45159 anti-Cytochrome P450 2B6/CYP2B6 antibody FACS image

Flow Cytometry: THP-1 stained with ARG45159 anti-Cytochrome P450 2B6/CYP2B6 antibody at $1\text{ }\mu\text{g}/10^6$ cells dilution.