

ARG45160 anti-MTUS1 antibody

Package: 50 µg
Store at: -20°C

Summary

Product Description	Rabbit Polyclonal antibody recognizes MTUS1
Tested Reactivity	Hu, Ms, Rat
Tested Application	ICC/IF, WB
Host	Rabbit
Clonality	Polyclonal
Isotype	Rabbit IgG
Target Name	MTUS1
Species	Human
Immunogen	Recombinant protein containing to human MTUS1.
Conjugation	Un-conjugated
Alternate Names	Microtubule-associated tumor suppressor 1; AT2 receptor-binding protein; Angiotensin-II type 2 receptor-interacting protein; Mitochondrial tumor suppressor 1; MTUS1; ATBP; ATIP; GK1; KIAA1288; MTSG1

Application Instructions

Application table	Application	Dilution
	ICC/IF	2 µg/ml
	WB	0.1-0.5 µg/ml
Application Note	* The dilutions indicate recommended starting dilutions and the optimal dilutions or concentrations should be determined by the scientist.	
Observed Size	170 kDa	

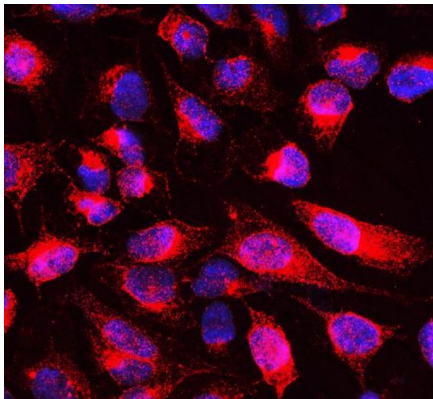
Properties

Form	Liquid
Purification	Affinity purification with immunogen.
Buffer	0.2% Na ₂ HPO ₄ , 0.9% NaCl, 0.05% Sodium azide and 4% Trehalose.
Preservative	0.05% Sodium azide
Stabilizer	4% Trehalose
Concentration	0.5 mg/ml
Storage instruction	For continuous use, store undiluted antibody at 2-8°C for up to a week. For long-term storage, aliquot and store at -20°C or below. Storage in frost free freezers is not recommended. Avoid repeated freeze/thaw cycles. Suggest spin the vial prior to opening. The antibody solution should be gently mixed before use.

Bioinformation

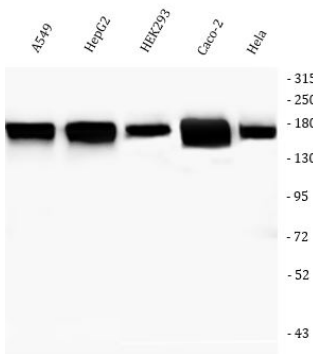
Gene Symbol	MTUS1
Gene Full Name	microtubule associated scaffold protein 1
Background	This gene encodes a protein which contains a C-terminal domain able to interact with the angiotension II (AT2) receptor and a large coiled-coil region allowing dimerization. Multiple alternatively spliced transcript variants encoding different isoforms have been found for this gene. One of the transcript variants has been shown to encode a mitochondrial protein that acts as a tumor suppressor and participates in AT2 signaling pathways. Other variants may encode nuclear or transmembrane proteins but it has not been determined whether they also participate in AT2 signaling pathways. [provided by RefSeq, Jul 2008]
Function	Cooperates with AGTR2 to inhibit ERK2 activation and cell proliferation. May be required for AGTR2 cell surface expression. Together with PTPN6, induces UBE2V2 expression upon angiotensin-II stimulation. Isoform 1 inhibits breast cancer cell proliferation, delays the progression of mitosis by prolonging metaphase and reduces tumor growth. [UniProt]
Calculated Mw	141 kDa
PTM	Phosphoprotein. [UniProt]
Cellular Localization	Mitochondrion; Golgi apparatus; Cell membrane; Nucleus. [UniProt]

Images



ARG45160 anti-MTUS1 antibody ICC/IF image

Immunofluorescence: U2OS stained with ARG45160 anti-MTUS1 antibody at 2 ug/ml dilution.



ARG45160 anti-MTUS1 antibody WB image

Western blot: A549, HepG2, HEK293, Caco-2, and HeLa stained with ARG45160 anti-MTUS1 antibody at 0.5 µg/ml dilution.