

ARG45175 anti-PHEX antibody

Package: 50 µg
Store at: -20°C

Summary

Product Description	Rabbit Polyclonal antibody recognizes PHEX
Tested Reactivity	Hu, Ms, Rat, Mk
Tested Application	FACS, IHC-P, WB
Host	Rabbit
Clonality	Polyclonal
Isotype	Rabbit IgG
Target Name	PHEX
Species	Human
Immunogen	Recombinant protein containing to human PHEX.
Conjugation	Un-conjugated
Alternate Names	Phosphate-regulating neutral endopeptidase PHEX; Metalloendopeptidase homolog PEX; Vitamin D-resistant hypophosphatemic rickets protein; X-linked hypophosphatemia protein; HYP; PHEX; PEX

Application Instructions

Application table	Application	Dilution
	FACS	1 - 3 µg/10 ⁶ cells
	IHC-P	0.5-1 µg/ml
	WB	0.25-0.5 µg/ml
Application Note	* The dilutions indicate recommended starting dilutions and the optimal dilutions or concentrations should be determined by the scientist.	
Observed Size	86 kDa	

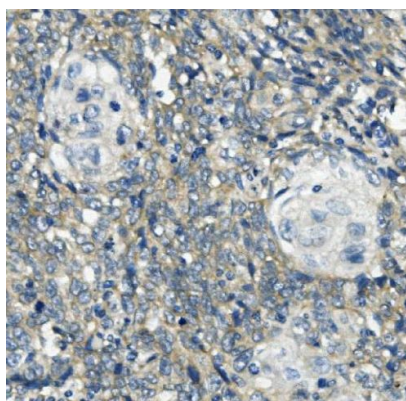
Properties

Form	Liquid
Purification	Affinity purification with immunogen.
Buffer	0.2% Na ₂ HPO ₄ , 0.9% NaCl, 0.05% Sodium azide and 4% Trehalose.
Preservative	0.05% Sodium azide
Stabilizer	4% Trehalose
Concentration	0.5 mg/ml
Storage instruction	For continuous use, store undiluted antibody at 2-8°C for up to a week. For long-term storage, aliquot and store at -20°C or below. Storage in frost free freezers is not recommended. Avoid repeated freeze/thaw cycles. Suggest spin the vial prior to opening. The antibody solution should be gently mixed before use.

Bioinformation

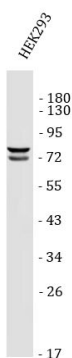
Gene Symbol	PHEX
Gene Full Name	phosphate regulating endopeptidase homolog X-linked
Background	The protein encoded by this gene is a transmembrane endopeptidase that belongs to the type II integral membrane zinc-dependent endopeptidase family. The protein is thought to be involved in bone and dentin mineralization and renal phosphate reabsorption. Mutations in this gene cause X-linked hypophosphatemic rickets. Alternative splicing results in multiple transcript variants. [provided by RefSeq, Sep 2013]
Function	Peptidase that cleaves SIBLING (small integrin-binding ligand, N-linked glycoprotein)-derived ASARM peptides, thus regulating their biological activity . [UniProt]
Calculated Mw	86 kDa
PTM	Disulfide bond; Glycoprotein. [UniProt]
Cellular Localization	Cell membrane. [UniProt]

Images



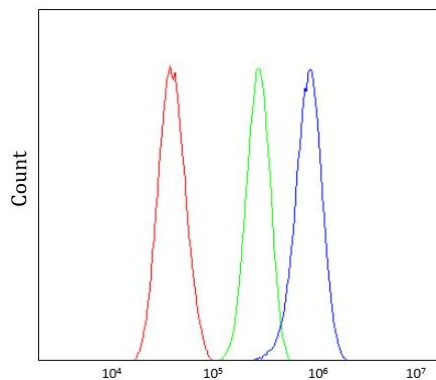
ARG45175 anti-PHEX antibody IHC-P image

Immunohistochemistry: Human lung cancer stained with ARG45175 anti-PHEX antibody at 1 µg/ml dilution.



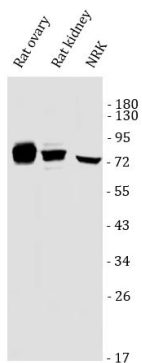
ARG45175 anti-PHEX antibody WB image

Western blot: HEK293 stained with ARG45175 anti-PHEX antibody at 0.5 µg/ml dilution.



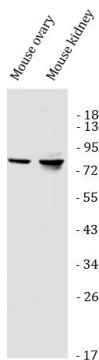
ARG45175 anti-PHEX antibody FACS image

Flow Cytometry: U87 stained with ARG45175 anti-PHEX antibody at 1 $\mu\text{g}/10^6$ cells dilution.



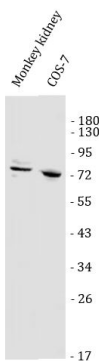
ARG45175 anti-PHEX antibody WB image

Western blot: Rat ovary, rat kidney, and NRK stained with ARG45175 anti-PHEX antibody at 0.5 $\mu\text{g}/\text{ml}$ dilution.



ARG45175 anti-PHEX antibody WB image

Western blot: Mouse ovary and mouse kidney stained with ARG45175 anti-PHEX antibody at 0.5 $\mu\text{g}/\text{ml}$ dilution.



ARG45175 anti-PHEX antibody WB image

Western blot: Monkey kidney and COS-7 stained with ARG45175 anti-PHEX antibody at 0.5 $\mu\text{g}/\text{ml}$ dilution.