

## ARG45180 anti-Synaptopodin antibody

Package: 50 µg  
Store at: -20°C

### Summary

Product Description	Rabbit Polyclonal antibody recognizes Synaptopodin
Tested Reactivity	Hu, Ms, Rat
Tested Application	FACS, ICC/IF, IHC-P, WB
Host	Rabbit
Clonality	Polyclonal
Isotype	Rabbit IgG
Target Name	Synaptopodin
Species	Human
Immunogen	Synthetic peptide corresponding to C-terminal region of human Synaptopodin.
Conjugation	Un-conjugated
Alternate Names	SYNPO; Glycogen synthase kinase-3 alpha; GSK-3 alpha; Serine/threonine-protein kinase GSK3A; GSK3A

### Application Instructions

Application table	Application	Dilution
	FACS	1 - 3 µg/10 <sup>6</sup> cells
	ICC/IF	5 µg/ml
	IHC-P	2-5 µg/ml
	WB	0.1-0.25 µg/ml
Application Note	* The dilutions indicate recommended starting dilutions and the optimal dilutions or concentrations should be determined by the scientist.	
Observed Size	99 kDa	

### Properties

Form	Liquid
Purification	Affinity purification with immunogen.
Buffer	0.9% NaCl, 0.2% Na <sub>2</sub> HPO <sub>4</sub> , 0.01% Sodium azide and 4% Trehalose.
Preservative	0.01% Sodium azide
Stabilizer	4% Trehalose
Concentration	0.5 mg/ml
Storage instruction	For continuous use, store undiluted antibody at 2-8°C for up to a week. For long-term storage, aliquot and store at -20°C or below. Storage in frost free freezers is not recommended. Avoid repeated freeze/thaw cycles. Suggest spin the vial prior to opening. The antibody solution should be gently mixed

before use.

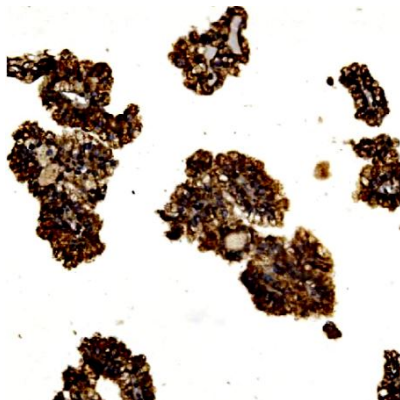
Note

For laboratory research only, not for drug, diagnostic or other use.

## Bioinformation

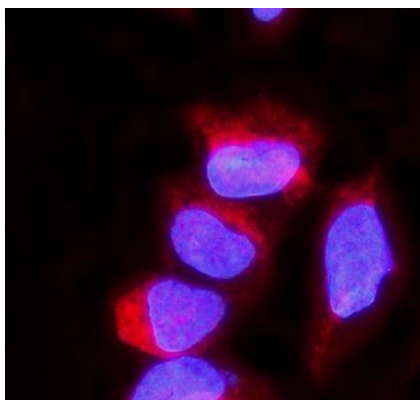
Gene Symbol	SYNPO
Gene Full Name	Synaptopodin
Background	Synaptopodin is an actin-associated protein that may play a role in actin-based cell shape and motility. The name synaptopodin derives from the protein's associations with postsynaptic densities and dendritic spines and with renal podocytes (Mundel et al., 1997 [PubMed 9314539]).[supplied by OMIM, Mar 2008]
Function	Actin-associated protein that may play a role in modulating actin-based shape and motility of dendritic spines and renal podocyte foot processes. Seems to be essential for the formation of spine apparatuses in spines of telencephalic neurons, which is involved in synaptic plasticity. [UniProt]
Calculated Mw	99 kDa
PTM	Acetylation; Glycoprotein; Phosphoprotein. [UniProt]
Cellular Localization	Cytoplasm, cytoskeleton; Cell junction, tight junction; Perikaryon; Cell projection, dendritic spine; Postsynaptic density; Synapse; Cytoplasm, cytosol. [UniProt]

## Images



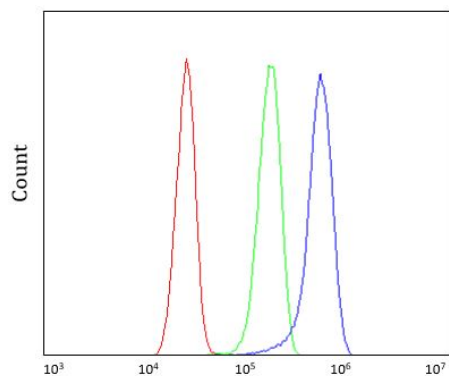
ARG45180 anti-Synaptopodin antibody IHC-P image

Immunohistochemistry: Human renal cancer stained with ARG45180 anti-Synaptopodin antibody at 2 µg/ml dilution.



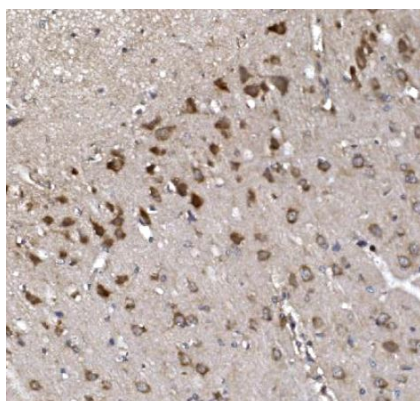
ARG45180 anti-Synaptopodin antibody ICC/IF image

Immunofluorescence: U2OS stained with ARG45180 anti-Synaptopodin antibody at 2 µg/ml dilution.



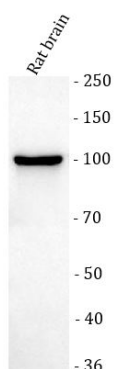
#### ARG45180 anti-Synaptopodin antibody FACS image

Flow Cytometry: U87 stained with ARG45180 anti-Synaptopodin antibody at 1  $\mu\text{g}/10^6$  cells dilution.



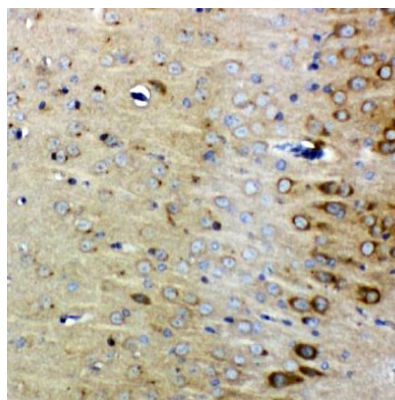
#### ARG45180 anti-Synaptopodin antibody IHC-P image

Immunohistochemistry: Rat brain stained with ARG45180 anti-Synaptopodin antibody at 2  $\mu\text{g}/\text{ml}$  dilution.



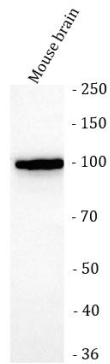
#### ARG45180 anti-Synaptopodin antibody WB image

Western blot: Rat brain stained with ARG45180 anti-Synaptopodin antibody at 0.5  $\mu\text{g}/\text{ml}$  dilution.



#### ARG45180 anti-Synaptopodin antibody IHC-P image

Immunohistochemistry: Mouse brain stained with ARG45180 anti-Synaptopodin antibody at 2  $\mu\text{g}/\text{ml}$  dilution.



#### ARG45180 anti-Synaptopodin antibody WB image

Western blot: Mouse brain stained with ARG45180 anti-Synaptopodin antibody at 0.5 µg/ml dilution.